



1 Bedroom
Neasden Lane, NW10

 **Portland**
Trusted, every step of the way

£1,750 PCM

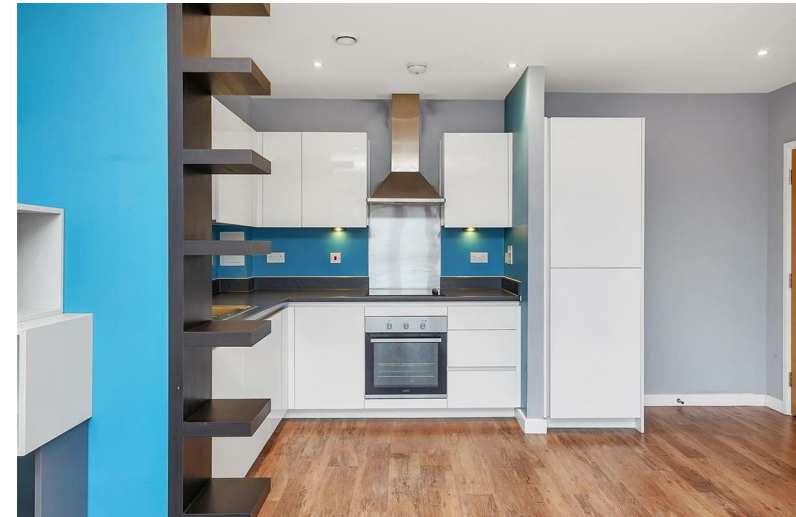
****NO PARKING AVAILABLE****

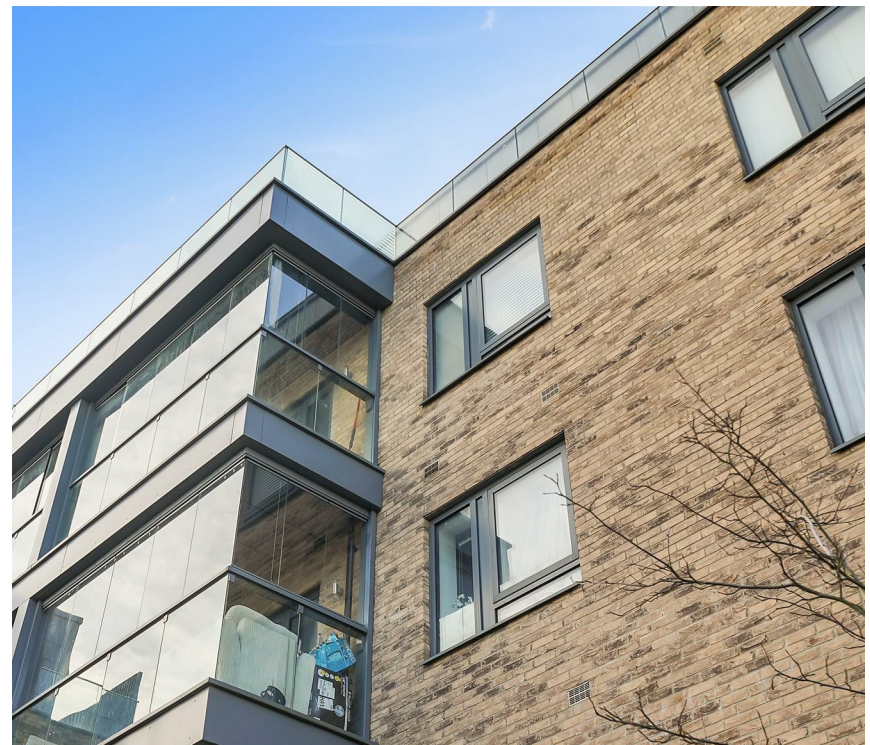
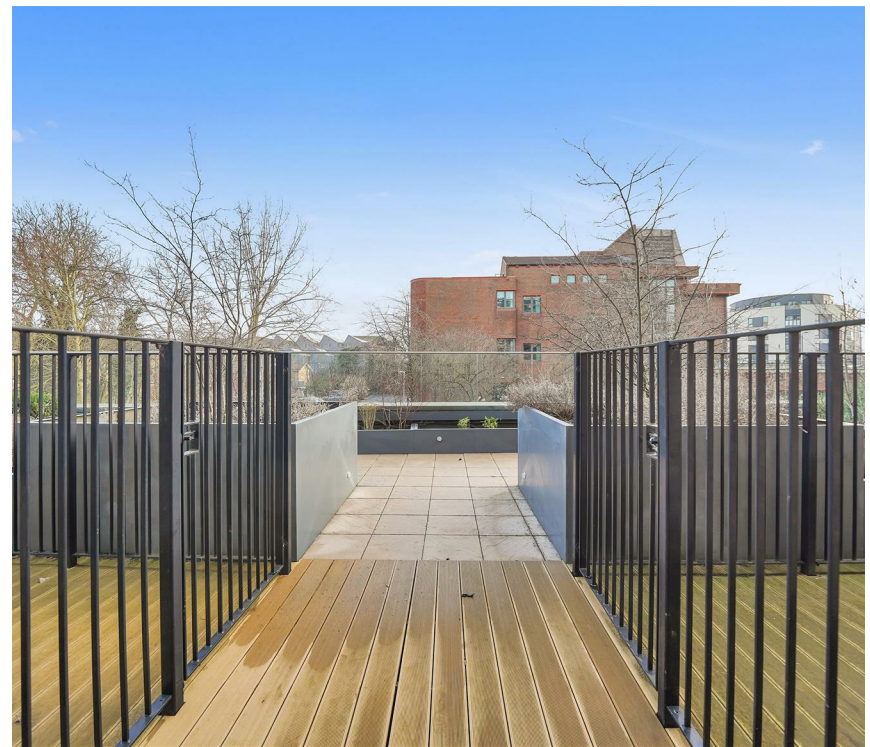
Offered to the market is a wonderful second floor one bedroom apartment with private balcony

Spanning nearly 550sqft, renters can expect to find a decent sized hallway on arrival with excellent storage. There is a bright open plan kitchen living room with direct access to a private winter garden with views over the church and Wembley arches. There is great double bedroom with built in storage as well as a fully fitted family bathroom.

Caneletto Court is a newly built apartment with video entry security system, gorgeous communal roof terrace and excellent access to the Jubilee Line (Neasden). The ever popular Roundwood Park is a short stroll away and renters will benefit the abundance of shops nearby.

- Bright One Bedroom Apartment
- Private Winter Garden
- Abundance Of Storage Throughout
- Flooded With Natural Light
- Double Bedroom
- Views Of Wembley Arches
- Communal Roof Terrace
- Excellent Security
- Open Plan Living Space
- EPC – B







GROSS INTERNAL AREA (GIA)
The footprint of the property
50.7 sq m / 545 sq ft

TOTAL STORAGE SPACE
Storage and available total area
2.6 sq m / 27 sq ft

EXTERNAL FEATURES
Garden, Balcony, Terrace, Verandah etc.
4.9 sq m / 52 sq ft

RESTRICTED HEAD HEIGHT
Limited use area under 1.5m
0.0 sq m / 0.0 sq ft

Disclaimer: Floorplan measurements are approximate and are for illustrative purposes only. While we do not doubt the floorplan accuracy and completeness, you or your advisors should conduct a careful, independent investigation of the property in respect of monetary valuation.



90 Walm Lane, London, NW2 4QY
020 8451 9844
info@portlandestateagents.co.uk
www.portlandestateagents.co.uk

