



3 Bedroom
Chapter Road, NW2

 **Portland**
Trusted, every step of the way

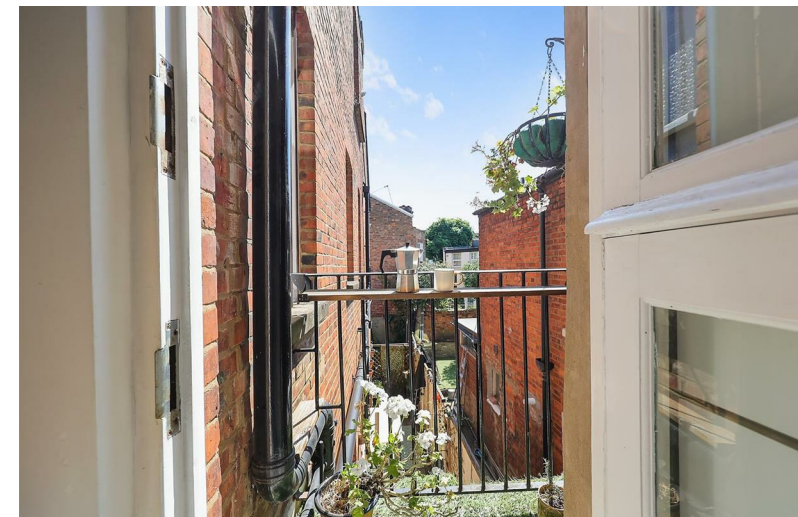
Asking Price £600,000
Leasehold

Victorian mansion flats are incredibly hard to find in Willesden Green, this three bedroom apartment is a rare find for the area.

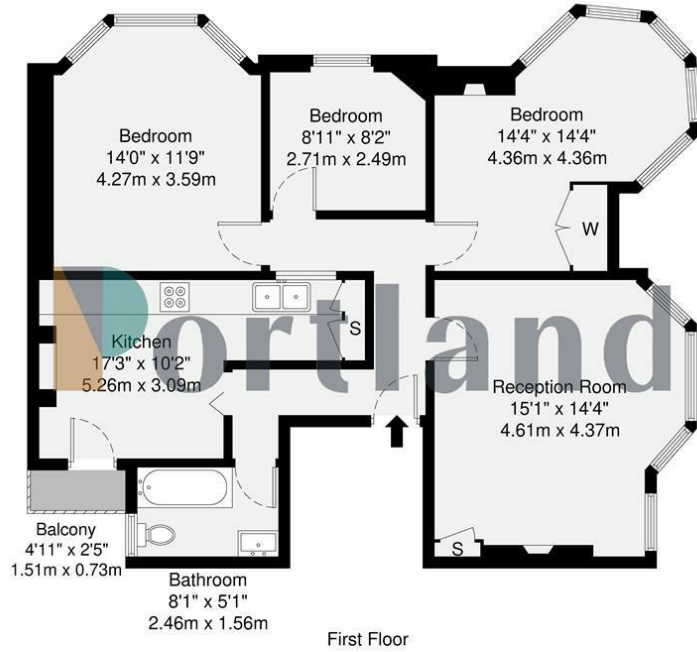
Boasting an impressive 894sqft of space, this charming home offers excellent proportions in a wonderful building. Buyers can expect to find a large eat in kitchen with a small balcony, two excellent sized bedrooms – one of which features a five bay "turret" window, a further single room and a breath-taking living room flooded with light. Period features are found throughout from the gorgeous wooden flooring to the fireplaces.

Buxton Mansions will be sold with vacant possession and is positioned well on the corner of Chapter Road, and Buxton Road. Access to Gladstone Park is a short stroll away, and you are only a few minutes walk to Willesden Green Station and the plethora of shops and eateries available on Walm Lane.

- Rarely available mansion flat
- Nearly 900sqft of accomadation
- Three bedrooms
- Stunning original features
- Close to Willesden Green Station
- Access to Gladstone Park just a short stroll away
- Separate kitchen
- Flooded with natural light
- Gorgeous original features
- Upper floor







GROSS INTERNAL AREA (GIA)
The footprint of the property
83.1 sq m / 894 sq ft

TOTAL STORAGE SPACE
Storage and available total area
1.6 sq m / 17 sq ft

EXTERNAL FEATURES
Garden, Balcony, Terrace, Verandah etc.
1 sq m / 10 sq ft

RESTRICTED HEAD HEIGHT
Limited use area under 1.5m
0.0 sq m / 0.0 sq ft

Disclaimer: Floorplan measurements are approximate and are for illustrative purposes only. While we do not doubt the floorplan accuracy and completeness, you or your advisors should conduct a careful, independent investigation of the property in respect of monetary valuation.



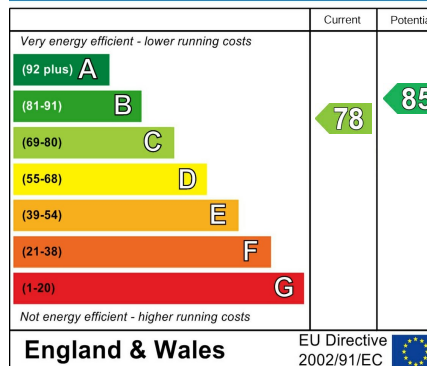
Trusted, every step of the way

90 Walm Lane, London, NW2 4QY
020 8451 9844

info@portlandestateagents.co.uk
www.portlandestateagents.co.uk



Energy Efficiency Rating



Environmental Impact (CO₂) Rating

