



1 Bedroom
Neasden Lane, NW10

 **Portland**
Trusted, every step of the way

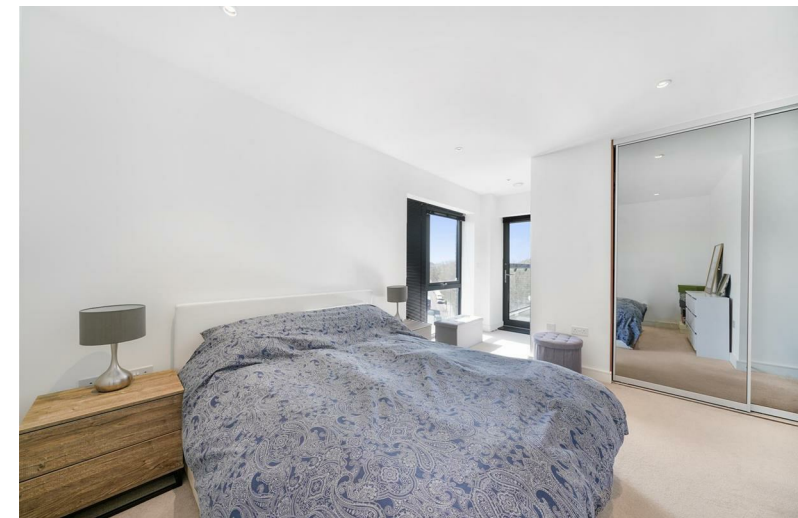
£1,850 PCM

Offered to the market is a wonderful 4th floor one bedroom apartment with private winter balcony.

Spanning nearly 550sqft, renters can expect to find a decent sized hallway on arrival with excellent storage. There is a bright open plan kitchen living room with direct access to a private winter garden with views over the church and Wembley arches. There is great double bedroom with built in storage as well as a fully fitted family bathroom.

Caneletto Court is a newly built apartment with video entry security system, gorgeous communal roof terrace and excellent access to the Jubilee Line (Neasden). The ever popular Roundwood Park is a short stroll away and renters will benefit the abundance of shops nearby.

- Furnished & Ready To Move-In
- Close to Transport Links & Amenities
- Winter Balcony
- Large Bedroom
- Communal Roof Terrace
- Abundance Of Storage Throughout
- Excellent Security
- Open Plan Living Space
- FURNISHED
- EPC – B







Fourth Floor



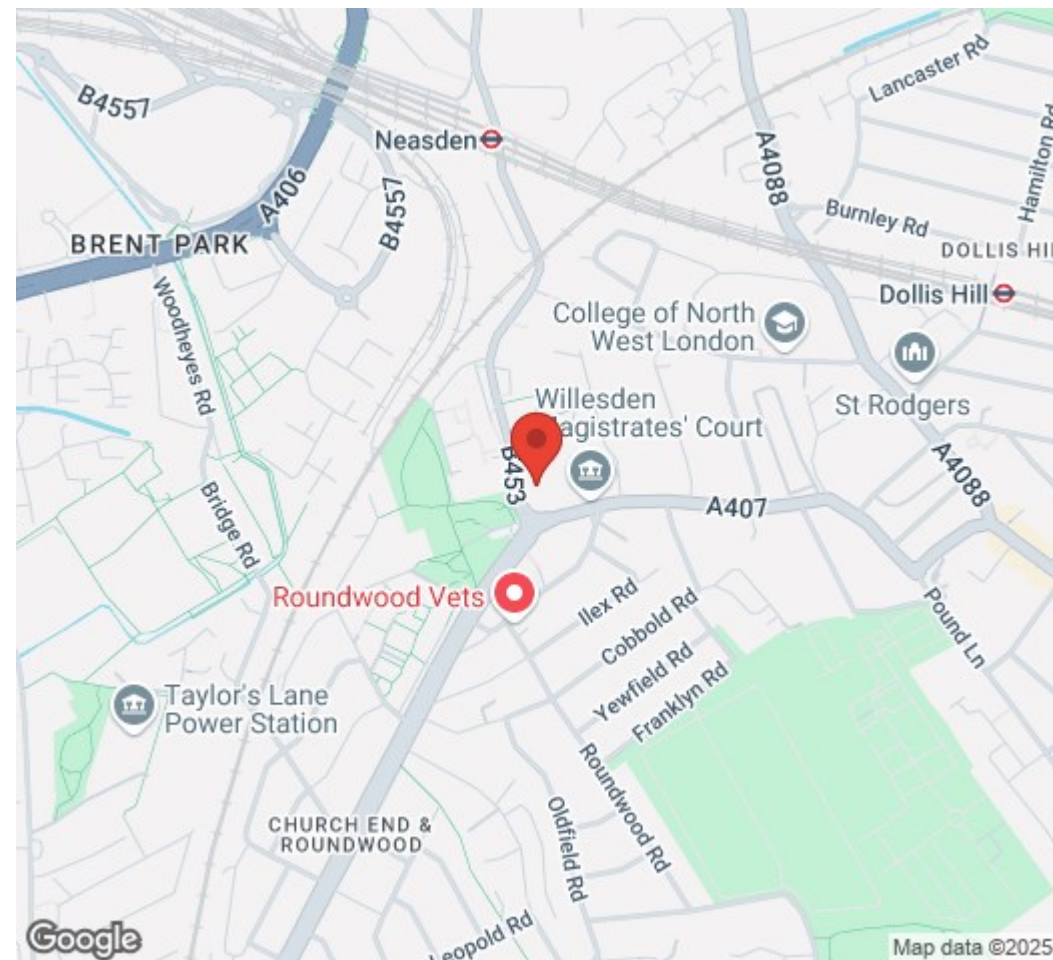
Disclaimer: Floorplan measurements are approximate and are for illustrative purposes only. While we do not doubt the floorplan accuracy and completeness, you or your advisors should conduct a careful, independent investigation of the property in respect of monetary valuation.



Trusted, every step of the way

90 Walm Lane, London, NW2 4QY
020 8451 9844

info@portlandestateagents.co.uk
www.portlandestateagents.co.uk



Energy Efficiency Rating

	Current	Potential
Very energy efficient - lower running costs		
(92 plus) A		
(81-91) B		
(69-80) C		
(55-68) D		
(39-54) E		
(21-38) F		
(1-20) G		
Not energy efficient - higher running costs		
England & Wales	EU Directive 2002/91/EC	

Environmental Impact (CO₂) Rating

	Current	Potential
Very environmentally friendly - lower CO ₂ emissions		
(92 plus) A		
(81-91) B		
(69-80) C		
(55-68) D		
(39-54) E		
(21-38) F		
(1-20) G		
Not environmentally friendly - higher CO ₂ emissions		
England & Wales	EU Directive 2002/91/EC	