



1 Bedroom
Willesden Lane, NW6

 **Portland**
Trusted, every step of the way

£450,000
Leasehold – Share of Freehold

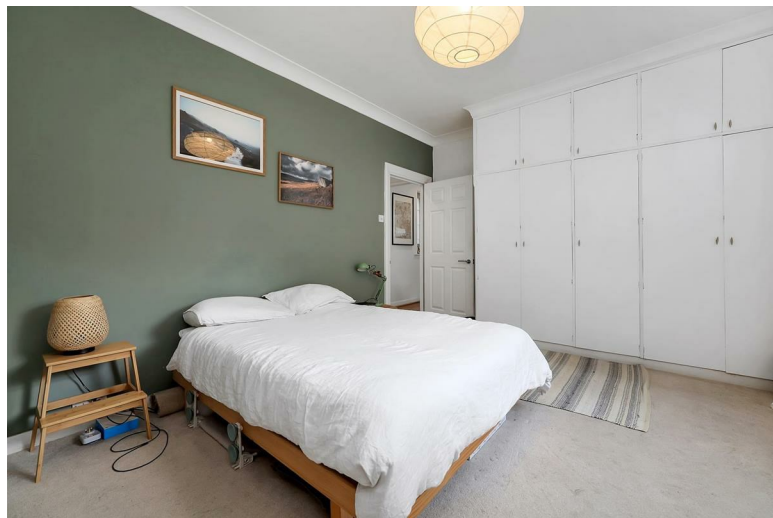
Spanning over 750sqft exceptionally large one bedroom apartment on the ground floor of a popular Art-Deco mansion block.

Presented in excellent condition, is an superb one bedroom flat. Prospective purchasers can expect to find a large hallway upon entry with an abundance of storage. Further down the hall is a large master bedroom with built in storage, a surprisingly bright reception room with Crittal style windows and views onto the well maintained communal gardens, the family bathroom and kitchen can be found to the rear.

This property is available with vacant possession and sold chain free. This property further benefits from off-street parking.

Marlow Court is a well run Art-Deco Mansion flat in the heart of Willesden Green. There is excellent bus services on Willesden Lane, and Willesden Green Underground on the Jubilee Line is a short walk away.

- Over 750sqft One Bedroom Apartment
- Rarely Available Art-Deco Mansion Flat
- Gorgeous Communal Gardens
- Resident's Parking
- Close To Station
- Presented In Excellent Condition
- Stunning Feature Crittal Windows
- Large Double Bedroom With Built In Storage
- Ground Floor
- Long Underlying Lease With Share Of Freehold

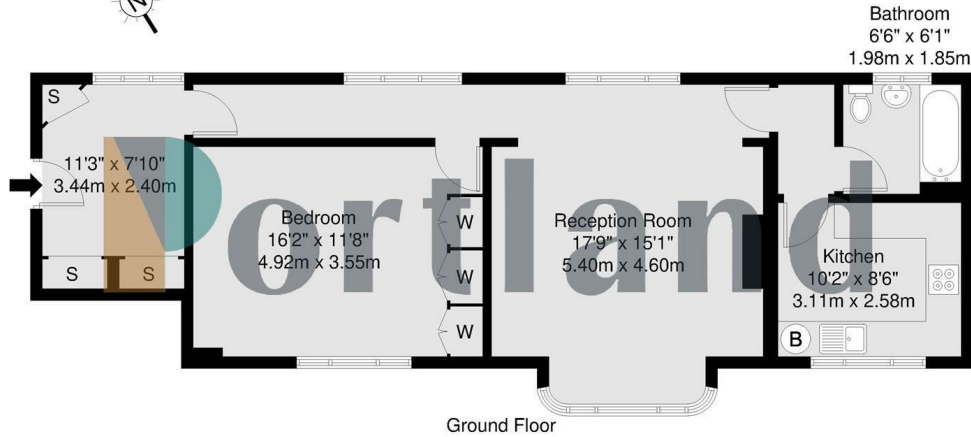




Portland

Marlowe Court, Willesden Lane, NW6

GROSS INTERNAL AREA
70.7 sq m / 761 sq ft



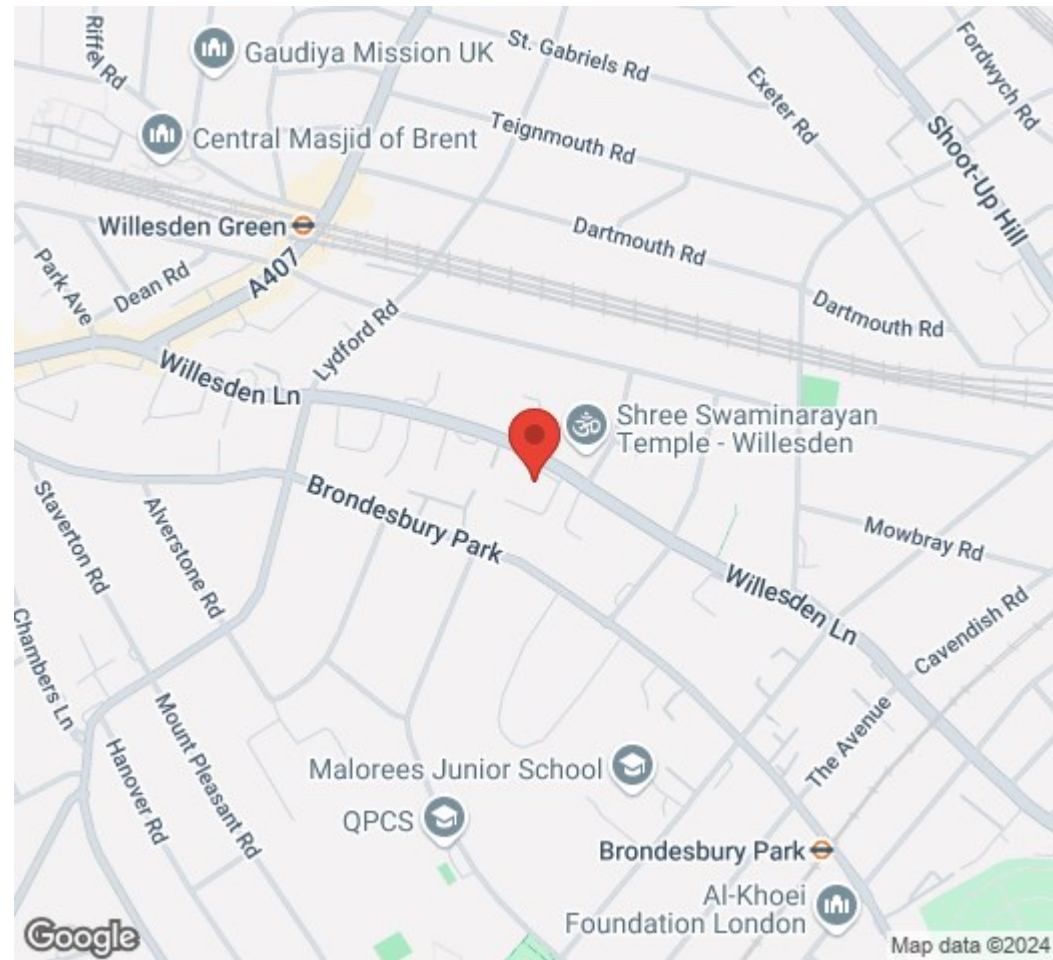
GROSS INTERNAL AREA (GIA)
The footprint of the property
70.7 sq m / 761 sq ft

TOTAL STORAGE SPACE
Storage and wardrobe total area
2.9 sq m / 31 sq ft

EXTERNAL FEATURES
Garden, Balcony, Terrace, Verandah etc.
0.0 sq m / 0.0 sq ft

RESTRICTED HEAD HEIGHT
Limited use area under 1.5m
0.0 sq m / 0.0 sq ft

Disclaimer : Floorplan measurements are approximate and are for illustrative purposes only. While we do not doubt the floorplan accuracy and completeness, you or your advisors should conduct a careful, independent investigation of the property in respect of monetary valuation.

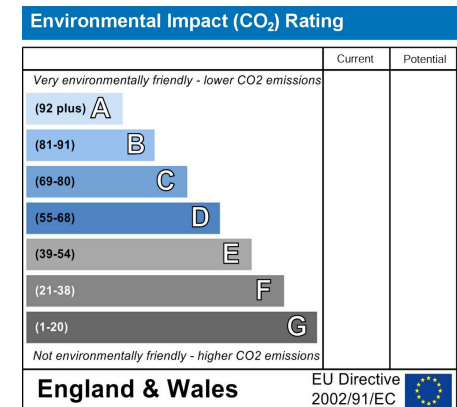
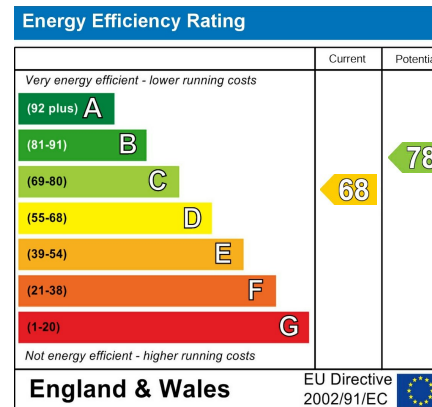


Portland

Trusted, every step of the way

90 Walm Lane, London, NW2 4QY
020 8451 9844

info@portlandestateagents.co.uk
www.portlandestateagents.co.uk



Important Notice - These particulars have been prepared in good faith and they are not intended to constitute part of an offer or contract. We have not performed a structural survey on this property and the services, appliances and specific fittings have not been tested. All photographs, measurements, floor plans and distances referred to are given as a guide and should not be relied upon.