



Shobroke Close, NW2
£275,000 Leasehold

 **Portland**
Trusted, every step of the way

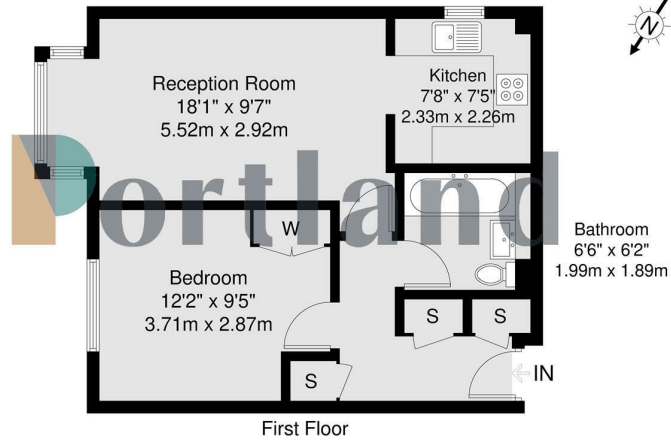


Floor Plan



Katrine Court, Shobrooke Close, NW2

GROSS INTERNAL AREA
44.5 sq m / 478 sq ft



GROSS INTERNAL AREA (GIA)
44.5 sq m / 478 sq ft

TOTAL STORAGE SPACE
Storage (not included in GIA)
2.3 sq m / 24 sq ft

EXTERNAL STRUCTURAL FEATURES
External Structure (External Structure Inc.)
0.0 sq m / 0.0 sq ft

RESTRICTED HEAD HEIGHT
Restricted Head Height (Not included in GIA)
0.0 sq m / 0.0 sq ft

Disclaimer : Floorplan measurements are approximate and are for illustrative purposes only. While we do not doubt the floorplan accuracy and completeness, you or your advisors should conduct a careful, independent investigation of the property in respect of monetary valuation.

Area Map



Important Notice - These particulars have been prepared in good faith and they are not intended to constitute part of an offer or contract. We have not performed a structural survey on this property and the services, appliances and specific fittings have not been tested. All photographs, measurements, floor plans and distances referred to are given as a guide and should not be relied upon.

Accommodation

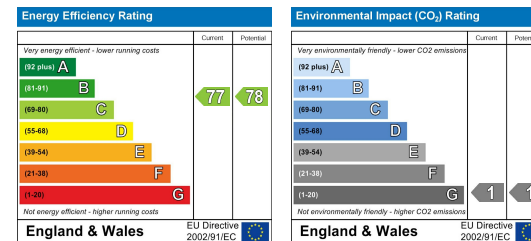
- Gated Off Street Parking
- Wonderful Condition
- Wooden Flooring
- Quiet Residential Location
- Separate Kitchen
- Close To Gladstone Park
- Bright First Floor Flat
- Purpose Build Development



Viewing

Please contact our Portland Estate Agents Office on 020 8451 9844 if you wish to arrange a viewing appointment for this property or require further information.

Energy Efficiency Graph



90 Walm Lane, London, NW2 4QY
020 8451 9844

info@portlandestateagents.co.uk
www.portlandestateagents.co.uk

