



3 Bedroom  
St. Gabriels Road, NW2

 **Portland**  
Trusted, every step of the way

£1,150,000  
Leasehold

An excellent Three Bedroom Garden Flat, set in the heart of the Mapesbury Conservation Area.

The apartment benefits from its own entrance at the side of the property, and spans nearly 1300sqft. There are Two double bedrooms, of which one is the Master boasting a dressing room and Ensuite. A Third bedroom, and a family bathroom. The reception room stretches over 27ft and has doors going out onto the large garden, off the lounge is a fully fitted kitchen with the same pleasant green views.

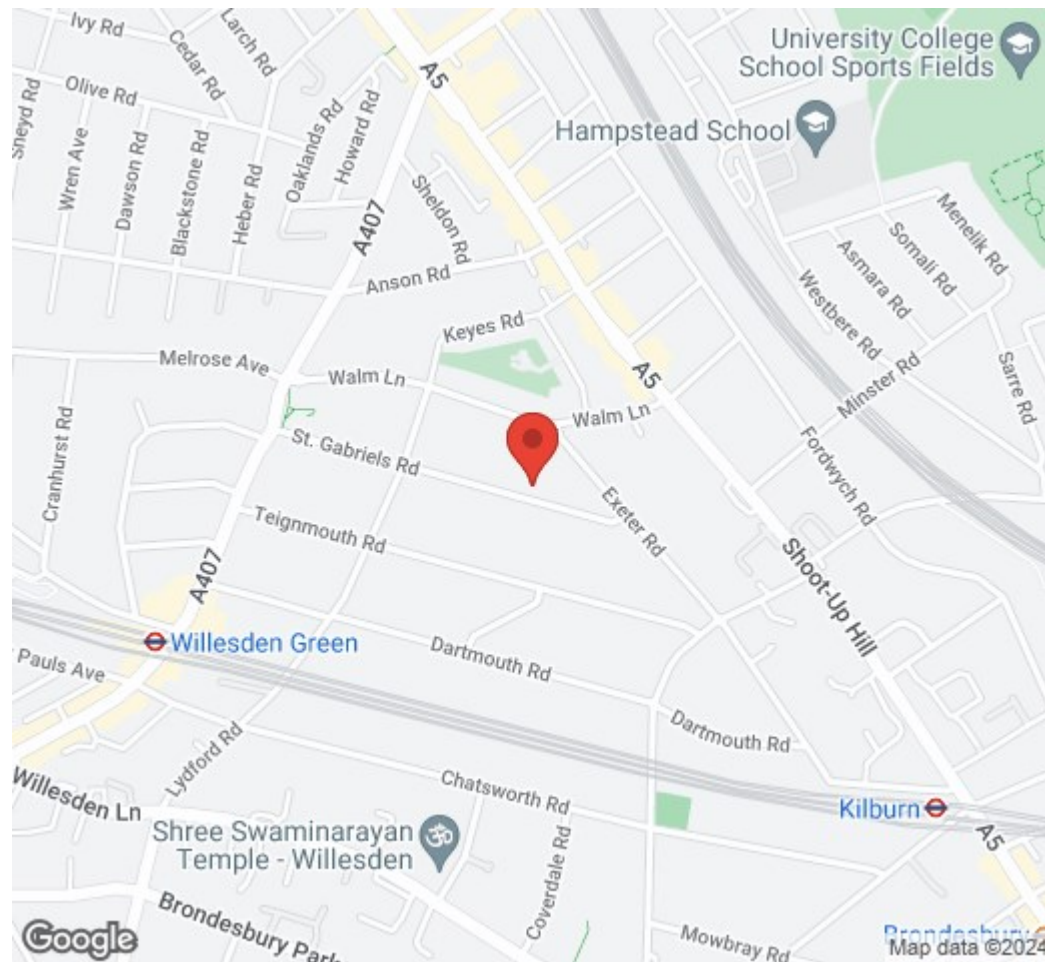
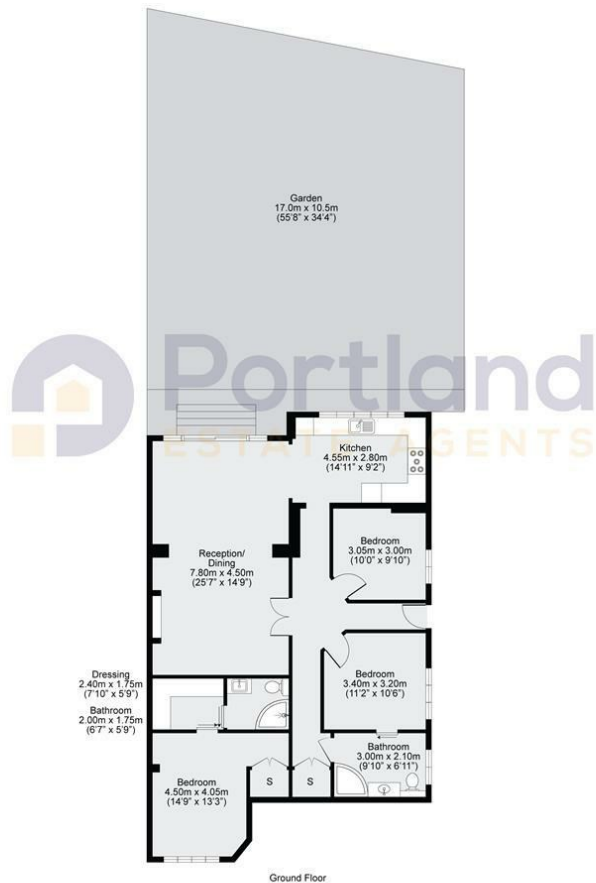
The Mapesbury Conservation Area is an incredibly sought-after location with wide treelined streets, protected Victorian architecture and a community feel. St. Gabriels Road is well positioned between Willesden Green & Kilburn Stations (Jubilee) and a short walk to the hidden gem that is the Mapesbury Dell.

- Three Bedroom Garden Flat
- Mapesbury Conservation Area
- Desirable Location
- Private Entrance
- Brilliant Ceiling Height
- Large Private Garden
- Walk In Wardrobe In Master
- 27ft Long Reception Room with  
Gorgeous Views on Garden
- Close to Shops
- Modern Fully Fitted Kitchen





**St Gabriels Road, London, NW2**  
 Approx. Gross Internal Area = 117.0sqm / 1259.4sqft



Disclaimer: Floorplan measurements are approximate and are for illustrative purposes only. While we do not doubt the floorplan accuracy and completeness, you or your advisors should conduct a careful, independent investigation of the property in respect of monetary valuation.

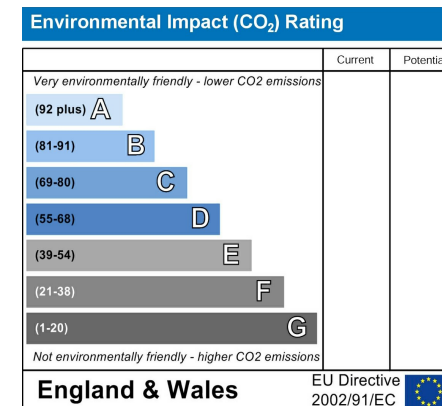
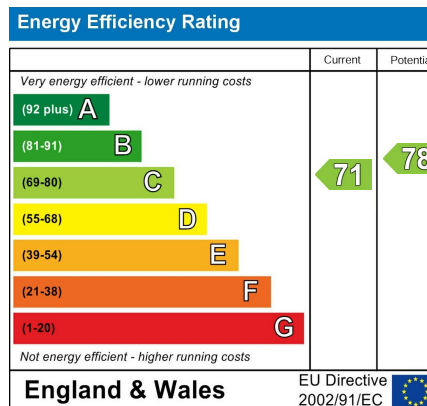


**Portland**

Trusted, every step of the way

90 Walm Lane, London, NW2 4QY  
 020 8451 9844

info@portlandestateagents.co.uk  
 www.portlandestateagents.co.uk



Important Notice - These particulars have been prepared in good faith and they are not intended to constitute part of an offer or contract. We have not performed a structural survey on this property and the services, appliances and specific fittings have not been tested. All photographs, measurements, floor plans and distances referred to are given as a guide and should not be relied upon.