



1 Bedroom
Chatsworth Road, NW2

 **Portland**
Trusted, every step of the way

Asking Price £290,000
Leasehold

Offered to the market with No Onward Chain is a Split Level One Bedroom Flat moments from the Jubilee Line.

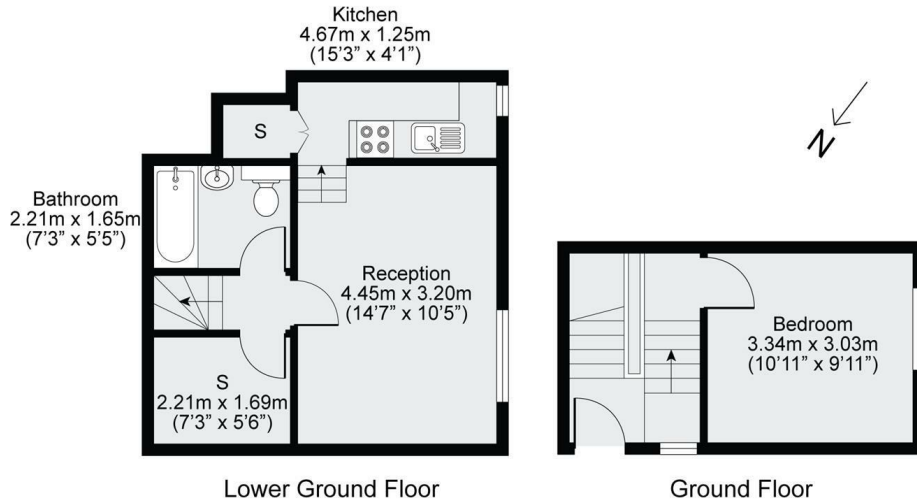
Chatsworth Road is a charming Victorian Street featuring large detached houses set back from the treelined road. This excellent flat benefits from its own private entrance on the ground floor and buyers can expect to find a bright bedroom with great ceiling height. Going downstairs, the apartment has a three-piece bathroom, a well-proportioned living room and a galley kitchen with aluminium finishes. Throughout there is an abundance of storage.

This property is offered with vacant possession and there will be no onward chain. Internally the property is in poor condition and allows prospective purchasers to add their own flair and style for minimal expense. There have been damp surveys conducted on the property indicating works are needed in excess of £40,000, prospective buyers should discuss raising finance with their broker as traditional mortgage options may not be available.

This property is positioned a short walk from Kilburn Station (Jubilee) as well as the huge amount of shops and eateries available on the High Road. The ever-trendy Salusbury Road is a 0.6m walk and the wonderful green spaces of Queens Park & The Mapesbury Dell are also within walking distance. Creditors are selling this property and some information relating to the flat may not be known.

- Split Level Living
- One Bedroom Apartment
- Long Lease
- Close To Jubilee Line
- Charming Victorian Conversion
- Separate Kitchen
- Abundance Of Storage
- Over 540sqft





Disclaimer: Floorplan measurements are approximate and are for illustrative purposes only. While we do not doubt the floorplan accuracy and completeness, you or your advisors should conduct a careful, independent investigation of the property in respect of monetary valuation.

Maison VUE



Trusted, every step of the way

90 Walm Lane, London, NW2 4QY
020 8451 9844
info@portlandestateagents.co.uk
www.portlandestateagents.co.uk

