

Oak Lodge, Kensington Green, W8

JOWEBSTER





Oak Lodge, Kensington Green, W8

A superb one bedroom apartment within the gated and secure development of Kensington Green. The apartment is located on the fourth floor (with lift) of Oak Lodge comprising 568 sq. ft (52.8 sq.m) of living space. The apartment benefits from a reception room with views overlooking the grounds, separate kitchen, double bedroom with built in storage and separate bathroom. One car parking space is included also.

Kensington Green is located just south of Kensington High Street and benefits from 24 hour security and concierge, award winning landscaped gardens and underground car parking, providing an ideal living environment. The resident only gymnasium is also located within the Stone Hall building which is a great benefit. It is located close to the Kensington High Street tube station and also has good access to the A4 and M4 motorway for Heathrow Airport.

Property Attributes

- Reception Room
- Kitchen
- Double Bedroom
- Bathroom
- Residents Gym
- Landscaped Gardens
- Car Parking

Terms

- £915,000
- Share of Freehold (999 Years from Sept.'91)
- Royal Borough of Kensington & Chelsea
- Estimated Service Charge £5,362 per annum (2024)
- Ground Rent £102 per annum (2024)
- Council Tax Band G

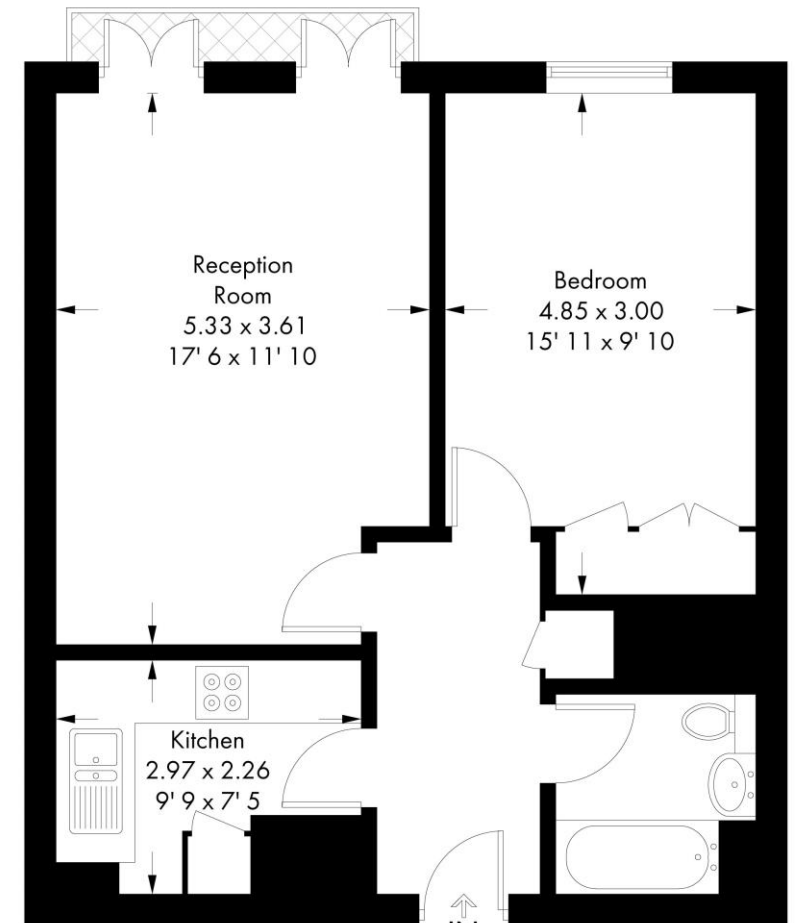
+44 (0)20 7349 7055
 sales@jowebster.com
 www.jowebster.com

Important Notice

These sales particulars are believed to be correct, but their accuracy is not guaranteed, nor do they form any part of a contract. We have not carried out a detailed survey nor tested services, appliances or fittings. Purchasers must satisfy themselves by inspection or otherwise.

Oak Lodge Kensington Green

Approximate Gross Internal Area = 568 sq ft / 52.8 sq m



Fourth Floor

This plan is not to scale and must be used as layout guidance only. All measurements and areas are approximate and should not be relied upon to provide accurate information. This plan must not be relied upon when making property valuations, design considerations or any other such relevant decisions. We accept no responsibility or liability (whether in contract, tort or otherwise) in relation to any loss whatsoever arising from or in connection with any use of this plan or the adequacy, accuracy or completeness of it or any information within it.