



**JOWEBSTER**

*29 Harbour Reach  
Imperial Wharf, SW6*



### Property Attributes

- Reception room
- Separate Kitchen
- Private Balcony
- Two Bedrooms
- Two Bathrooms (One En Suite)

### Terms

- Price: £750,000
- Borough: Royal Borough of Kensington And Chelsea
- Tenure: Leasehold
- Service Charge: £8,869 per annum
- Ground Rent: £500 per annum
- Council Tax Band: Band G

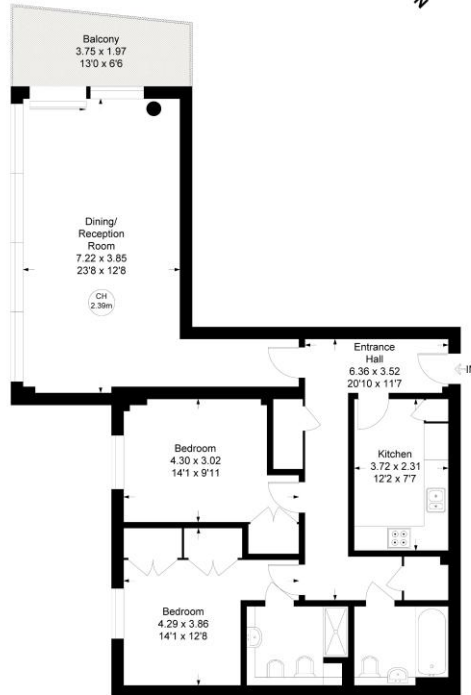




## HARBOUR REACH, SW6

Approximate gross internal area = 1009 sq ft / 93.72 sq m

Key:  
CH - Ceiling Height



### Sixth Floor

Not to scale, for guidance only and must not be relied upon as a statement of fact.  
All measurements and areas are approximate only

+44 (0) 20 7349 7055  
sales@jowebster.com

#### Misdescription Act

We wish to advise prospective purchasers that these sales particulars are believed to be correct, but their accuracy is in no way guaranteed, nor do they form any part of contract. We have not carried out a detailed survey nor tested the services, appliances or specific fittings. Measurements are approximate.