

JOWEBSTER

The Montevetro Building, Battersea, SW11





The Montevetro Building, Battersea, SW11

A beautiful river-facing apartment presented as a studio space but with a well defined reception room and bedroom area. The reception room leads on to a well fitted kitchen with Bulthaup units. The bedroom area leads on to a dressing area and glass panelled bathroom.

The apartment benefits from spectacular river views from both the living and bedroom spaces and has glass sliding doors that lead on to the west facing balcony.

The Montevetro Building offers 24 hour security, secure parking, along with resident only gym, tennis court access and communal gardens. The development is located within close proximity to the green spaces of Battersea Park, Battersea Bridge and the amenities of Kings Road.



Property Attributes

- Entrance Hall
- Reception Area
- Bedroom Area
- Kitchen
- Bathroom
- Balcony
- Tennis Court
- Gym, Spa
- 24 Hour security and concierge, gated entry with CCTV
- Car parking space

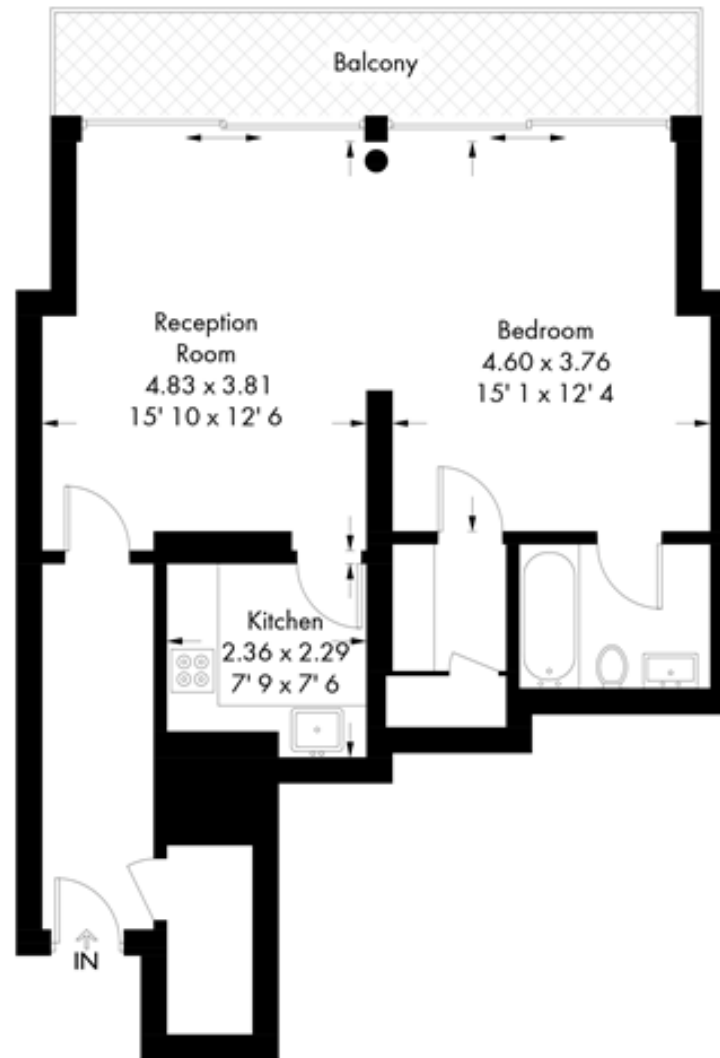
Terms

- £910,000
- Royal Borough of Kensington And Chelsea
- Share of Freehold
- Estimated Service charge TBC
- Estimated Ground rent TBC
- Council Tax Band



Montevetro

Approximate Gross Internal Area = 653 sq ft / 60.7 sq m



Second Floor

*Not to scale, for guidance only and must not be relied upon as a statement of fact
All measurements and areas are approximate only and have been prepared in
accordance with the current edition of the RICS Code of Measuring Practice*

+44 (0)20 7349 7055
sales@jowebster.com
www.jowebster.com

Important Notice

These sales particulars are believed to be correct, but their accuracy is not guaranteed, nor do they form any part of a contract. We have not carried out a detailed survey nor tested services, appliances or fittings.
Purchasers must satisfy themselves by inspection or otherwise.