

Albion Riverside, Battersea, SW11





Albion Riverside, Battersea, SW11

This exceptional three-bedroom apartment, located on the fifth floor of the prestigious Albion Riverside development, offers breathtaking views over the river. The property features a spacious, light-filled open-plan reception room and kitchen, which extends to a private balcony—ideal for entertaining. The master and second bedrooms are both equipped with walk-in wardrobes and en-suite bathrooms, while the third bedroom is conveniently located across the hall from a separate family shower room. Ample storage throughout further enhances the apartment's appeal. The property also includes one allocated car parking space.

Albion Riverside is an award-winning development by Foster and Partners, offering residents access to a range of premium amenities, including underground parking, 24-hour security and concierge services, a gym, swimming pool, and a podium garden. Ideally situated along the river between Albert and Battersea Bridges, the development is just moments from Battersea Park and within walking distance of local cafés, restaurants, and the shops on King's Road and in Chelsea. The Thames Riverbus pier and the facilities at Battersea Power Station are also nearby, providing convenient access to the best of London living.



Property Attributes

- Open Plan Reception Room
- Kitchen
- Three Bedrooms
- Two En-suite Bathrooms
- Car Parking
- Walk-In Wardrobes
- Swimming Pool
- 24 Hour Security
- Gym
- Podium Garden

Terms

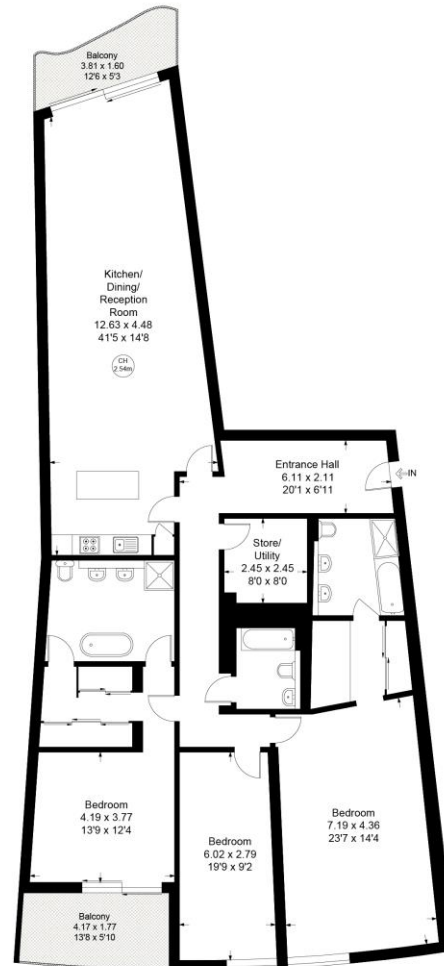
- £2,495,000
- London Borough of Wandsworth
- Leasehold (999 years from Sept. 91)
- Service charge approx. £27,000 Per Annum (2025)
- Ground rent £250 Per Annum (2025)
- Council Tax Band F



ALBION RIVERSIDE, HESTER ROAD, SW11

Approximate gross internal area = 2078 sq ft / 193.06 sq m

Key:
CH - Ceiling Height



Fifth Floor

Not to scale, for guidance only and must not be relied upon as a statement of fact.
All measurements and areas are approximate only

Important Notice

These sales particulars are believed to be correct, but their accuracy is not guaranteed, nor do they form any part of a contract. We have not carried out a detailed survey nor tested services, appliances or fittings. Purchasers must satisfy themselves by inspection or otherwise.

**BROOKS
MARSHALL**
LONDON

charles@brooksmarshall.co.uk
+44 (0)797 0196 355

www.brooksmarshall.co.uk
+44 (0)20 7183 9502

JOWEBSTER

+44 (0)20 7349 7055
sales@jowebster.com
www.jowebster.com