

JOWEBSTER

The Montevetro Building, Battersea, SW11





The Montevetro Building Battersea, SW11

This exceptional mezzanine level two bedroom apartment, situated within the prestigious Montevetro building, boasts a bright, west-facing aspect, complemented by expansive floor-to-ceiling windows in both the reception room and bedrooms. The property offers stunning views over the river and towards St Mary's Church, creating a tranquil and picturesque backdrop.

The apartment features a west-facing terrace that provides direct access to the private, landscaped gardens, offering a serene outdoor retreat. Additionally, it includes the convenience of one underground parking space. The master suite benefits from an en suite bathroom, while the second bedroom is ideally located opposite a separate family bathroom, accessed via the hallway.

Residents of Montevetro enjoy a range of premium amenities, including 24-hour security, beautifully landscaped gardens, a tennis court, and secure underground parking, ensuring both comfort and peace of mind.



Property Attributes

- Entrance Hall
- Reception Room
- Kitchen
- Two Bedrooms
- One Ensuite Bathroom
- One Family Bathroom
- 24 Hour Security
- Porterage
- Gymnasium
- One Car Parking Space

Terms

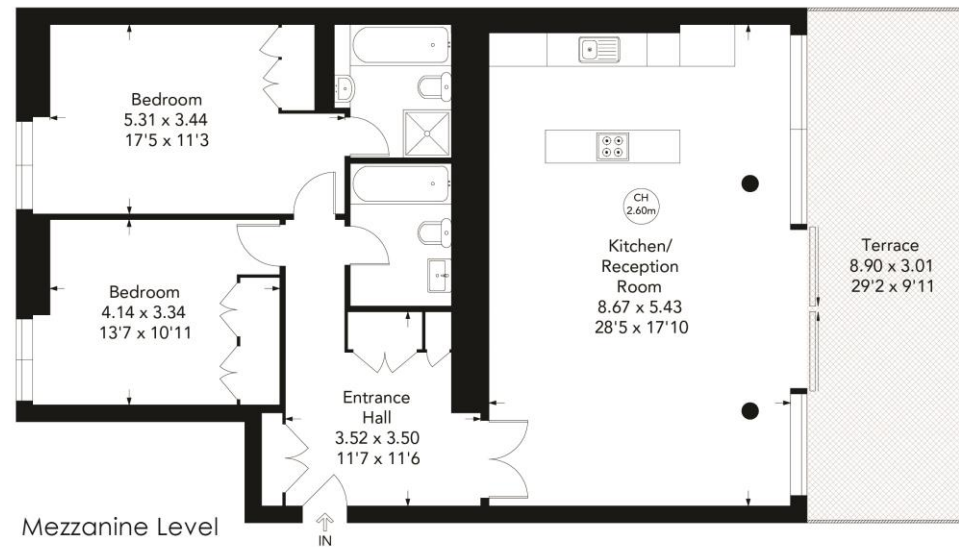
- £1,350,000
- London Borough of Wandsworth
- Share of Freehold (999 years from 24 June 1997)
- Council Tax Band G
- Service Charge Approx. £13,962.26 (2025)



THE MONTEVETRO BUILDING, BATTERSEA CHURCH ROAD, SW11

Approximate gross internal area = 1175 sq ft / 109.15 sq m

Key:
CH - Ceiling Height



Not to scale, for guidance only and must not be relied upon as a statement of fact.
All measurements and areas are approximate only

+44 (0)20 7349 7055
sales@jowebster.com
www.jowebster.com

Important Notice
These sales particulars are believed to be correct, but their accuracy is not guaranteed, nor do they form any part of a contract. We have not carried out a detailed survey nor tested services, appliances or fittings.
Purchasers must satisfy themselves by inspection or otherwise.