

Oak Lodge, Kensington Green, W8

JOWEBSTER





Oak Lodge, Kensington Green, W8

We are delighted to be offering this sizable 2-bedroom sub penthouse apartment located on the fifth floor of Oak Lodge, within the gated development Kensington Green.

This property comprises 1,165 sq. ft (108.21 sq. m) of living space including a bright and spacious reception room with dining area and double doors opening out onto the large private terrace with far reaching views of London, making an ideal space for entertaining. Additionally, a separate kitchen, two double bedrooms and two bathrooms, one being an en suite to the master. One car parking space is included.

Kensington Green is located south of Kensington High Street and benefits from 24-hour security and concierge, a resident only gym, award winning landscaped gardens and secure underground car parking which provides an ideal living environment. The development is located close to the Kensington High Street tube station and also has good access to the A4 and M4 motorway for Heathrow Airport.



Property Attributes

- Reception Room with Dining Area
- Fully Fitted Kitchen
- Two Bedrooms
- Two Bathrooms (One En suite)
- Large Private Terrace
- One Car Parking Space
- 24 Hour Concierge
- Resident Only Gym
- Landscaped Gardens

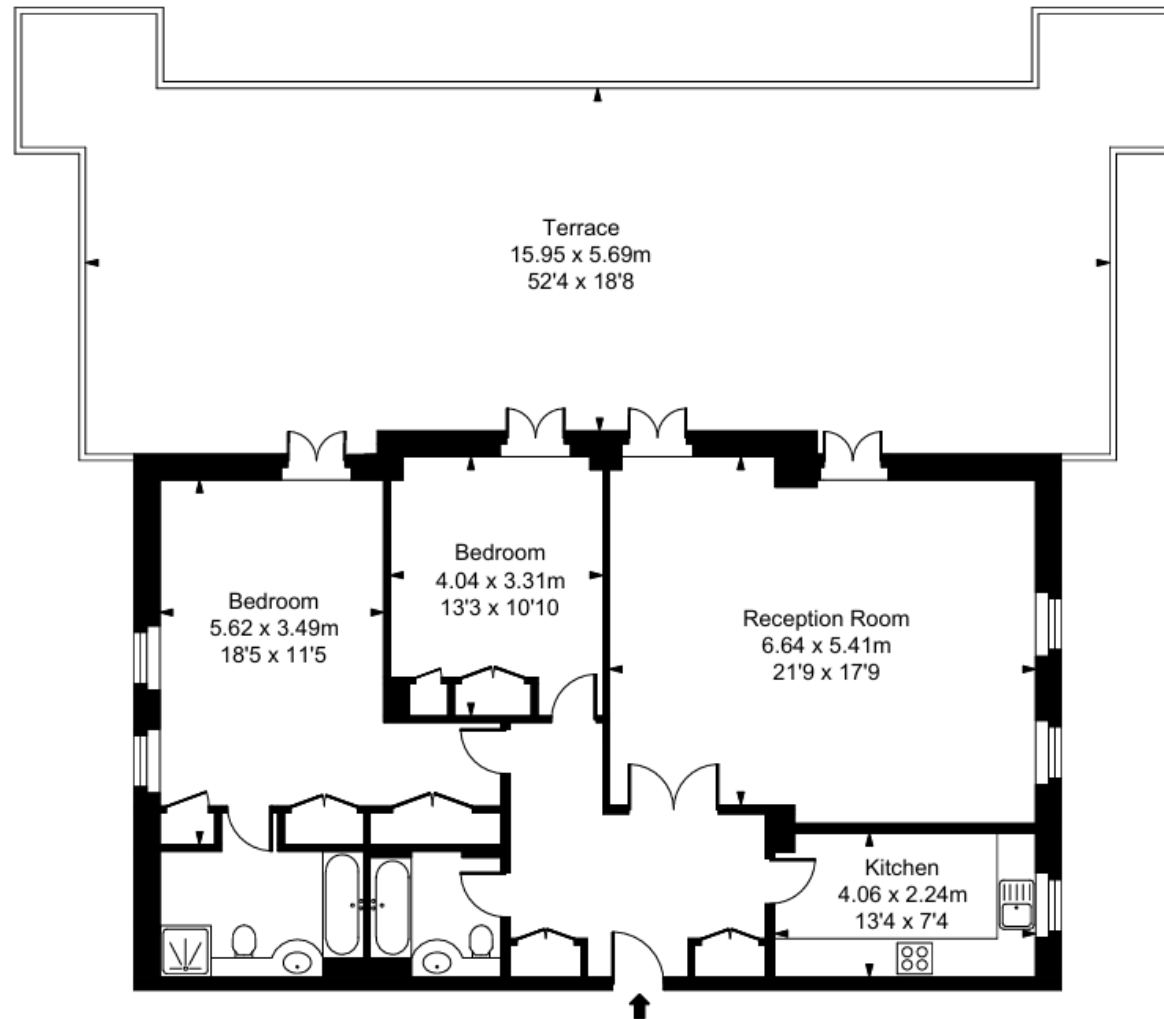
Terms

- £2,575,000
- Royal Borough of Kensington and Chelsea
- Share of Freehold (999 years from September 1991)
- Estimated Service charge £10,831.00 per annum (2024)
- Estimated Ground rent £150 per annum (2024)
- Council Tax Band H



Oak Lodge, Kensington Green, W8

Approximate Gross Internal Area
108.21 sq m / 1165 sq ft



Fifth Floor

+44 (0)20 7349 7055
sales@jowebster.com
www.jowebster.com

Important Notice
These sales particulars are believed to be correct, but their accuracy is not guaranteed, nor do they form any part of a contract. We have not carried out a detailed survey nor tested services, appliances or fittings.
Purchasers must satisfy themselves by inspection or otherwise.