

Mathison House, Kings Chelsea, SW10

**JOWEBSTER**





## Mathison House, Kings Chelsea, SW10

A well-presented south-facing, two bedroom apartment comprising a gross internal area of 1,096 sq.ft (101.8 sqm). The property is ideally situated on the fourth floor of the prestigious Kings Chelsea development, and benefits from a spacious reception room with large south-facing windows, an open plan kitchen, two bedrooms, two bathrooms (one en-suite), secondary glazing system throughout, combined heating and air cooling system, electric under floor heating to all rooms and one secure underground car parking space.

Mathison House is the main apartment building in Kings Chelsea and houses the concierge, leisure centre and indoor swimming pool. Kings Chelsea benefits from 24-hour security, landscaped gardens, a tennis court and underground car parking.

The development is ideally located between Fulham Road and Kings Roads in Chelsea, with numerous shops and restaurants, as well as rail, bus and river boat transport links within walking distance.

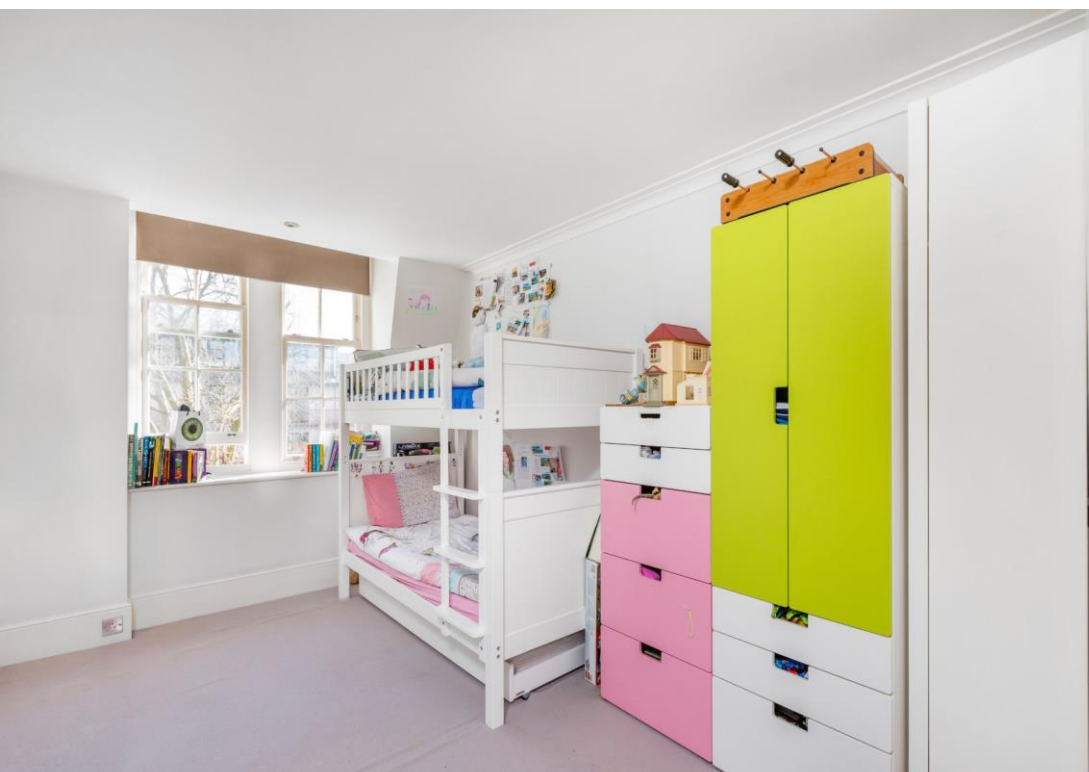


### Property Attributes

- Two Bedrooms
- Two Bathrooms
- Reception Room
- Kitchen
- Heating and Air Cooling System
- 24-Hour Security
- Concierge
- Landscaped Gardens
- Underground Parking
- Swimming Pool and Tennis Court

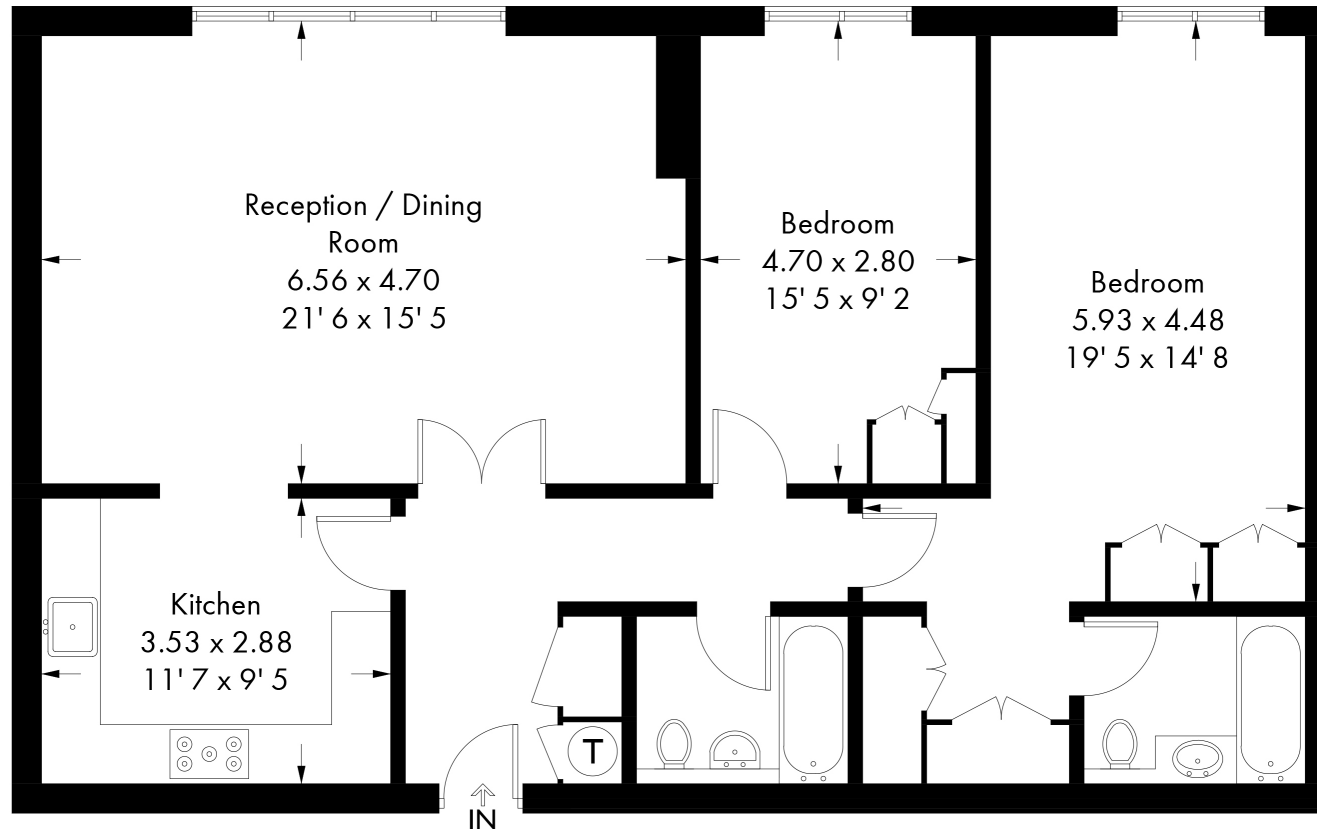
### Terms

- £1,425,000
- Royal Borough of Kensington And Chelsea
- Share of Leasehold (999 years from 1<sup>st</sup> January 2001)
- Estimated Service charge TBC
- Council Tax Band G



# Mathison House

Approximate Gross Internal Area = 1096 sq ft / 101.8 sq m



Fourth Floor

Not to scale, for guidance only and must not be relied upon as a statement of fact  
All measurements and areas are approximate only and have been prepared in  
accordance with the current edition of the RICS Code of Measuring Practice

+44 (0)20 7349 7055  
sales@jowebster.com  
www.jowebster.com

**Important Notice**  
These sales particulars are believed to be correct, but their accuracy is not guaranteed, nor do they form any part of a contract. We have not carried out a detailed survey nor tested services, appliances or fittings.  
Purchasers must satisfy themselves by inspection or otherwise.