

The Montevetro Building, Battersea, SW11

JOWEBSTER



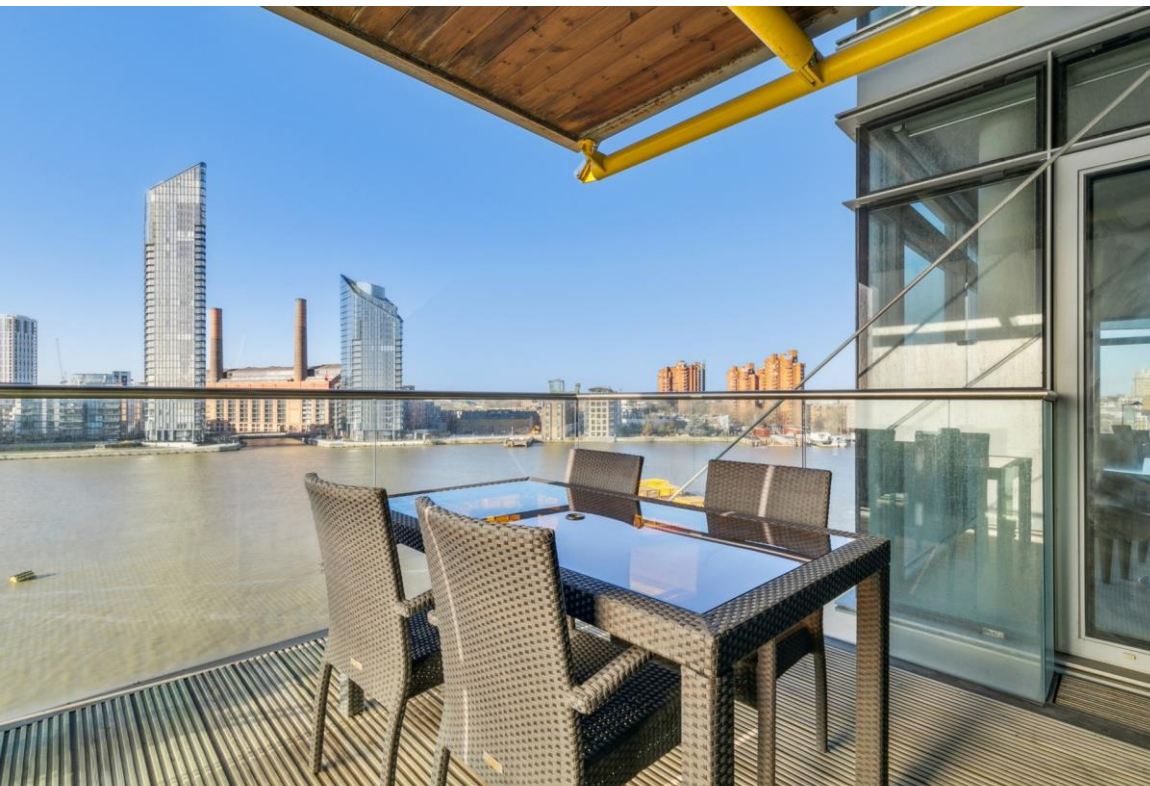


The Montevetro Building, Battersea, SW11

We are delighted to be offering an impressive three bedroom lateral apartment located on the 6th floor within the Montevetro Building. The large reception room benefits from double aspect floor to ceiling windows with expansive river views. The kitchen is separate and benefits from a balcony with views overlooking the river, the balcony off the kitchen can also be accessed from the reception room.

The master bedroom also provides double aspect floor to ceiling windows with excellent river views plus an en suite bathroom. This room is connected to a study area which leads through to the reception room, floor to ceiling windows with river views also. There are two further double bedrooms, family bathroom and additional separate shower room. The apartment is offered with ample storage throughout and two car parking spaces included.

Montevetro is ideally situated on the river Thames, close to the amenities of Battersea Square. It is moments from Battersea Bridge linking it to Chelsea and King's Road and is within proximity to Battersea Park. The development benefits from 24 hour security and concierge, car parking, gymnasium, tennis court and gardens.



Property Attributes

- Reception room with river views
- Kitchen
- Private Balcony
- Three Double Bedrooms
- Two Bathrooms (One En Suite)
- One Shower Room
- Study Area
- Two Car Parking Spaces
- 24 Hour Security
- Gym
- Tennis Court

Terms

- £3,150,000
- London Borough of Wandsworth
- Share of Freehold (999 years from 24 June 1997)
- Estimated Service charge £22,159.30 per annum (2024)
- Council Tax Band H

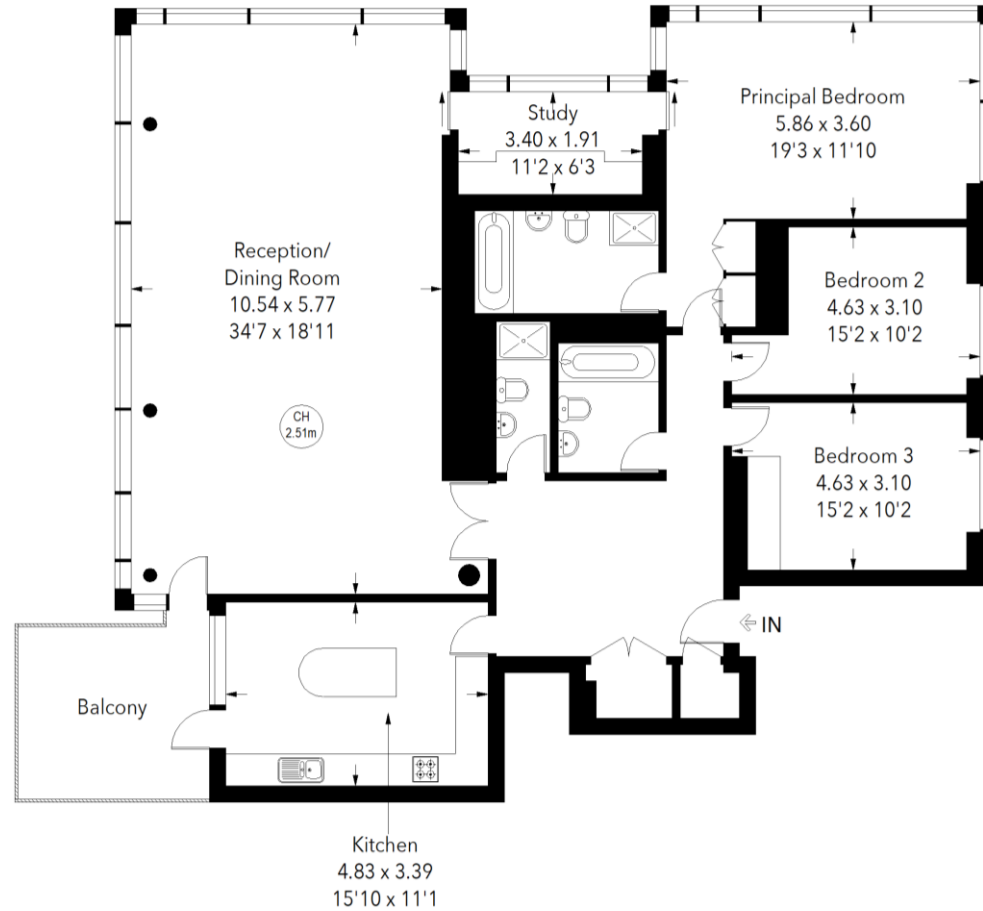


MONTEVETRO BUILDING, BATTERSEA CHURCH ROAD, SW11

Approximate gross internal area = 1971 sq ft / 183.11 sq m



Key :
CH - Ceiling Height



Sixth Floor

Not to scale, for guidance only and must not be relied upon as a statement of fact.
All measurements and areas are approximate only

+44 (0)20 7349 7055
sales@jowebster.com
www.jowebster.com

Important Notice
These sales particulars are believed to be correct, but their accuracy is not guaranteed, nor do they form any part of a contract. We have not carried out a detailed survey nor tested services, appliances or fittings.
Purchasers must satisfy themselves by inspection or otherwise.