



Sandalwood Mansions, Kensington Green, W8

**JO**WEBSTER





## Sandalwood Mansions, Kensington Green, W8

We are delighted to be offering this immaculate two bedroom apartment on the third floor of Sandalwood Mansions which is finished to a high standard throughout.

The apartment comprises 1,017 sq ft (94.5 sq m) and offers a spacious reception room with double patio doors opening onto the balcony as well as a separate newly fitted kitchen offering the highest in specification. The master bedroom has plenty of storage with an en suite bathroom. It also has double doors leading on to the balcony with views across the private landscaped gardens. There is a second double bedroom and separate shower room also finished to a high standard. The apartment comes with one secure underground car parking space.

Kensington Green is a short walk from Kensington High Street and is located close to the Kensington High Street tube station. The development benefits from 24-hour security and concierge service, award winning landscaped gardens, resident only gym, secure underground parking and has excellent transport links close by.



### Property Attributes

- Reception Room
- Kitchen
- Two Bedrooms
- One En Suite Bathroom
- Separate Shower Room
- Underground Car Parking
- 24 hour Concierge
- Landscaped Gardens
- Resident Only Gym

### Terms

- £2,250,000
- Share of Freehold (999 Years from Sept.'91)
- Royal Borough of Kensington & Chelsea
- Estimated Service Charge £9,488.42 per annum (2024)
- Estimated Ground Rent £150 per annum (2024)
- Council Tax Band H

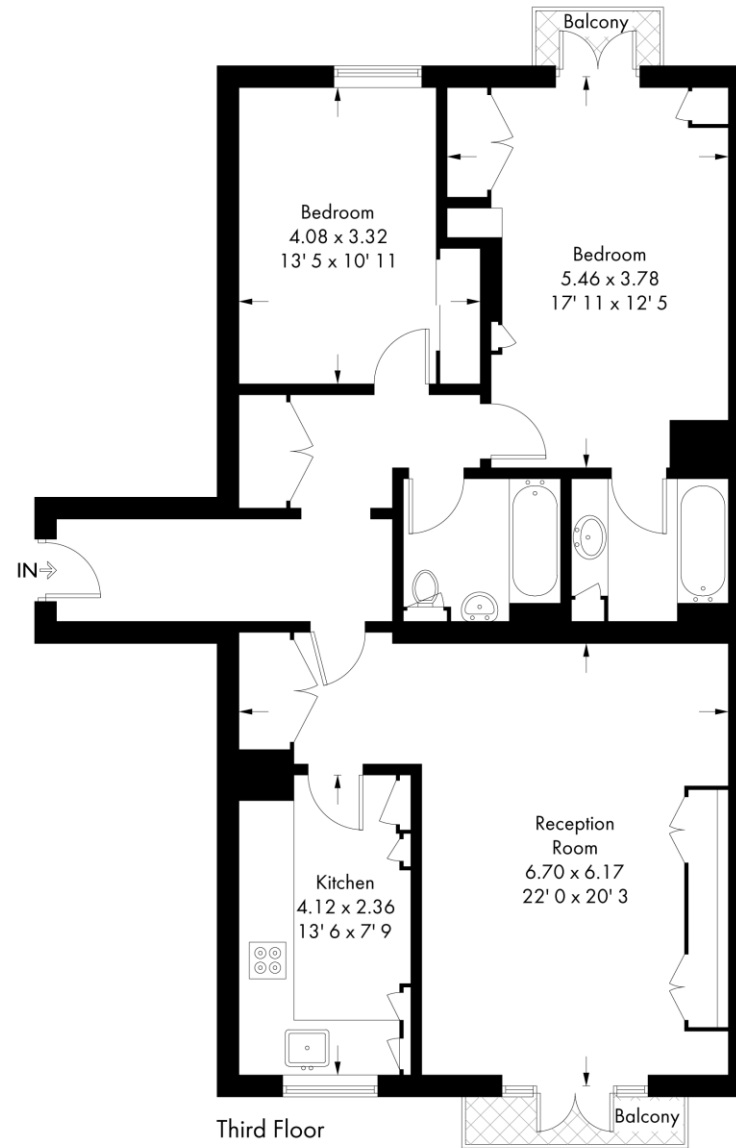






# Sandalwood

Approximate Gross Internal Area = 1017 sq ft / 94.5 sq m



Third Floor

This plan is not to scale and must be used as layout guidance only. All measurements and areas are approximate and should not be relied upon to provide accurate information. This plan must not be relied upon when making property valuations, design considerations or any other such relevant decisions. We accept no responsibility or liability (whether in contract, tort or otherwise) in relation to any loss whatsoever arising from or in connection with any use of this plan or the adequacy, accuracy or completeness of it or any information within it.

+44 (0)20 7349 7055  
[sales@jowebster.com](mailto:sales@jowebster.com)  
[www.jowebster.com](http://www.jowebster.com)

**Important Notice**  
 These sales particulars are believed to be correct, but their accuracy is not guaranteed, nor do they form any part of a contract. We have not carried out a detailed survey nor tested services, appliances or fittings.  
 Purchasers must satisfy themselves by inspection or otherwise.