

Stone Hall, Kensington Green, W8

**JOWEBSTER**







## Stone Hall, Kensington Green, W8

We are delighted to offer this impressive and luxurious two-bedroom apartment situated within the stunning listed Stone Hall building at Kensington Green.

Comprising 1,295 sq ft (120.3 sq m) this second floor apartment has been upgraded to an extremely high standard setting it apart from most other properties within the development.

It benefits from wood panelled walls, intricately designed plaster work to the ceilings and an impressive stone fireplace. There is a real sense of warmth and grandeur within this reception room which is accessed from a spacious hallway. The lattice style windows have west facing view towards Stone Hall Gardens and beyond. There is a well-appointed kitchen with windows to three sides, and space for a table. The west facing master bedroom has good storage and leads on to an ensuite bathroom. There is a second bedroom and second bathroom. The apartment further benefits from a secure underground car parking space.

Kensington Green is located just south of Kensington High Street and benefits from 24 hour security, award winning landscaped gardens and off street parking. The gymnasium is also located within the Stone Hall building which is also a benefit. It is located close to the Kensington High Street tube station and also has good access to the A4 and M4 motorway for Heathrow Airport.



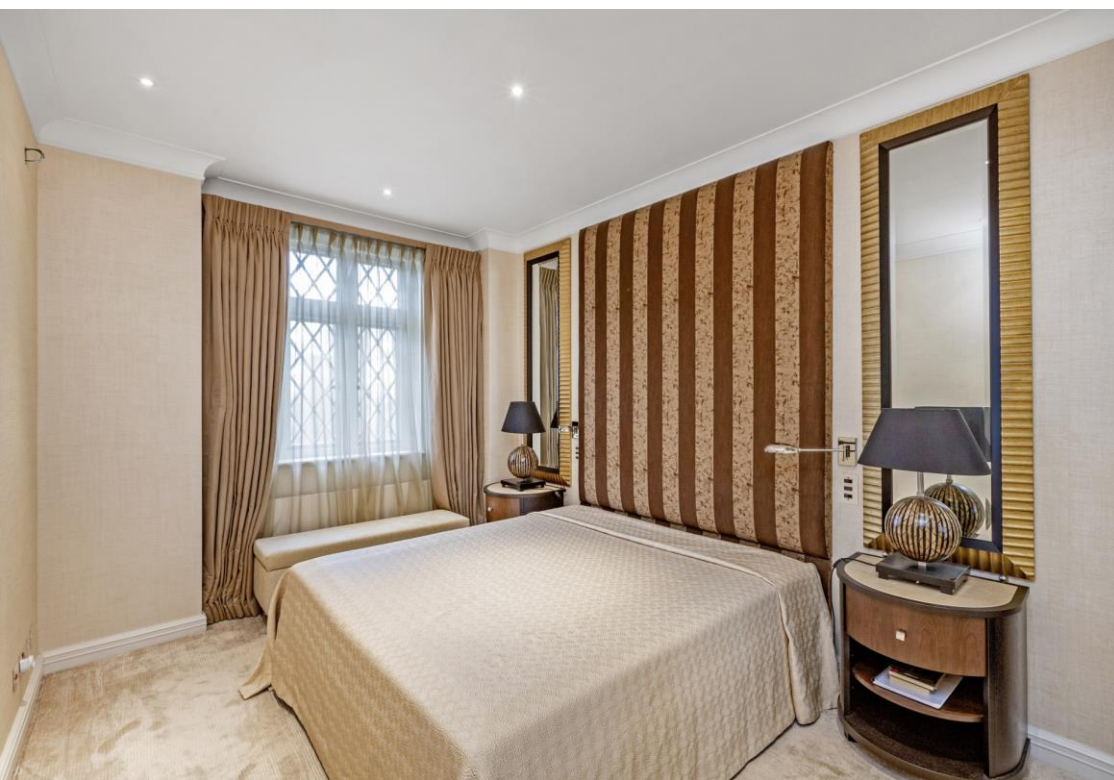
### Property Attributes

- 2 Bedrooms
- 2 Bathrooms (1 En-Suite)
- High Ceilings
- Reception Room
- Kitchen
- Underground Parking
- Gymnasium (Residents Only)
- Communal Gardens
- 24 Hour Security & Concierge

### Terms

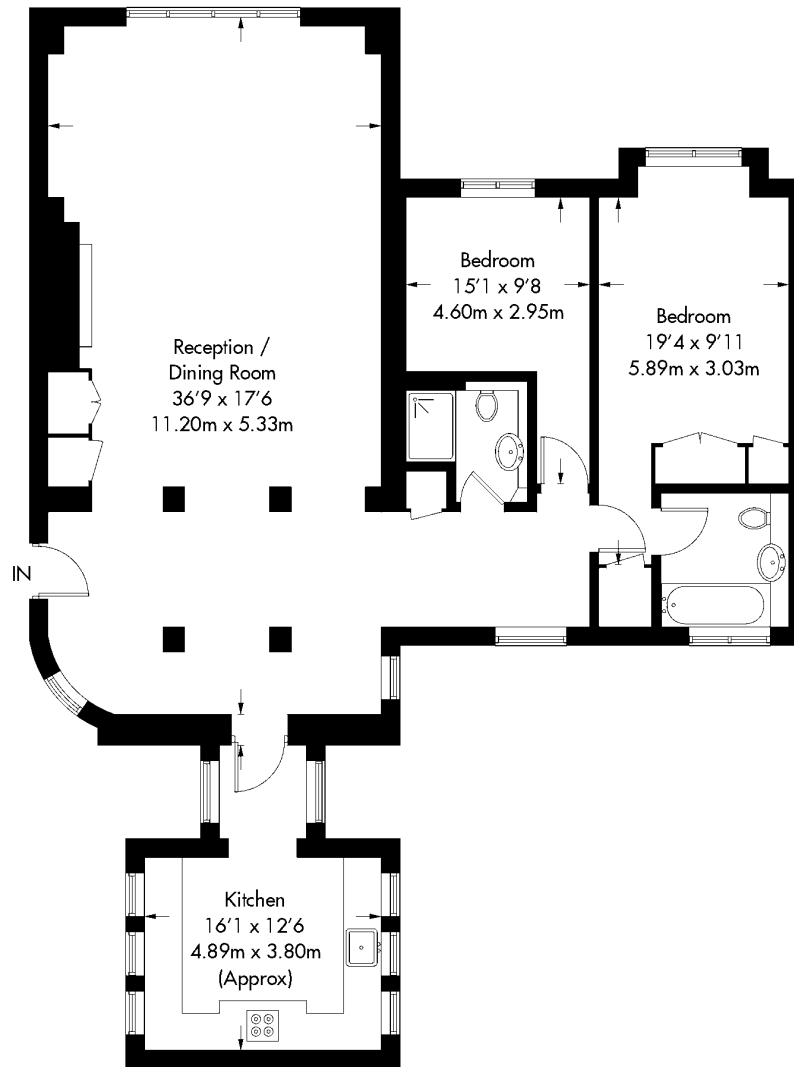
- £2,500,000
- Royal Borough of Kensington and Chelsea
- Leasehold (999 years from 29 September 1991)
- Service Charge £16,126.68 (Approx. 2024)
- Ground Rent £304 (Approx. 2024)
- Council Tax Band H





# Stone Hall

Approximate Gross Internal Area = 120.3 sq m / 1295 sq ft



## Second Floor

Not to scale, for guidance only and must not be relied upon as a statement of fact.

All measurements and areas are approximate only and have been prepared in accordance with the current edition of the RICS Code of Measuring Practice.

+44 (0)20 7349 7055  
sales@jowebster.com  
www.jowebster.com

### Important Notice

These sales particulars are believed to be correct, but their accuracy is not guaranteed, nor do they form any part of a contract. We have not carried out a detailed survey nor tested services, appliances or fittings. Purchasers must satisfy themselves by inspection or otherwise.