



CORNERSTONE

293 West Point, Wellington Street, Leeds, LS1 4JT



1 x  | 2 x  | 2 x  | 0 x  | D  EPC

293 West Point

£1,250 Per Month

This contemporary and spacious two-bedroom, two-bathroom furnished top floor apartment boasts breathtaking views of the City Centre. Ideally situated on Wellington Street in the West Point development, it offers easy access to Leeds Train Station, premier shopping destinations, and some of the city's finest restaurants. Perfectly positioned for those who want to fully enjoy the vibrant lifestyle that Leeds has to offer.

Important Information

EPC Rating: D

Council Tax Band: D

Parking: Allocated parking space

BOND £1,400

HOLDING DEPOSIT £280.00

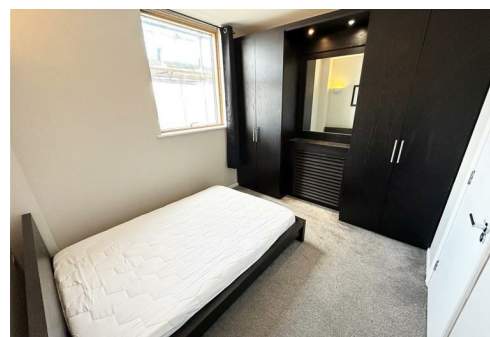
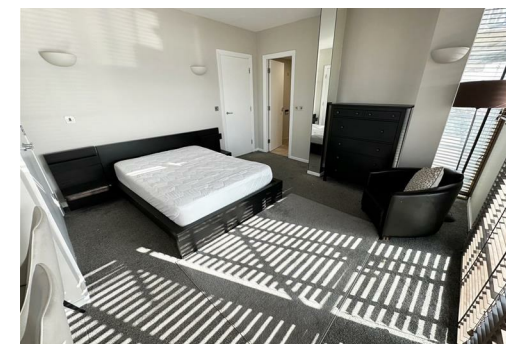
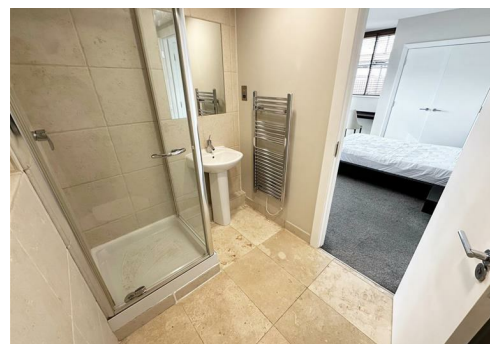
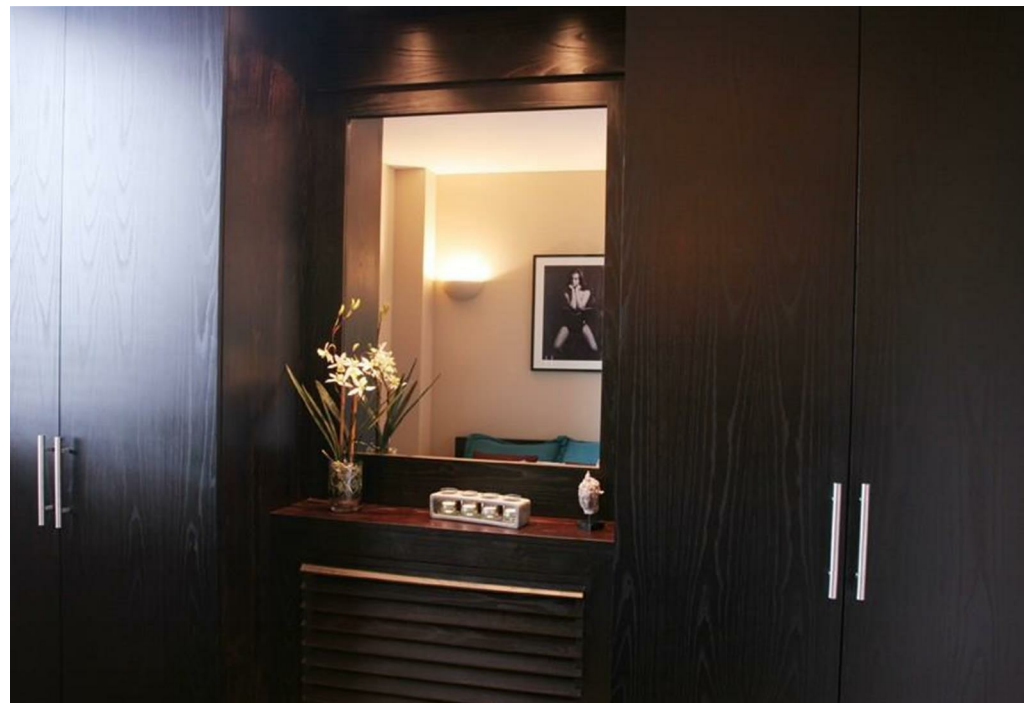
TO NOTE SOME OF THE PHOTOS ARE FROM THE ORIGINAL MARKETING

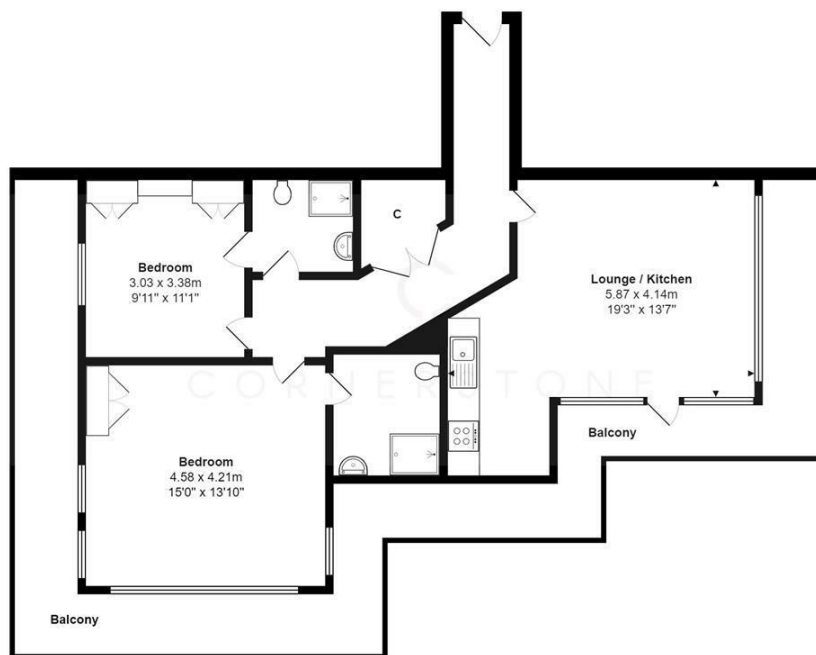
Applying for this property - The process for an applicant(s) wanting to rent this property. An application(s) form(s) must be completed and once we deem your application likely to fulfil our formal referencing checks and the landlord/landlady is happy to grant the tenancy based on the terms negotiated or specified we will then require a holding deposit to secure the property and remove it from the market while our formal referencing checks are completed. The holding deposit is the equivalent of one week's rent. The holding deposit will either be debited from your first month's rental payment or bond. If false information has been provided and this causes your application to be rejected/fail our referencing checks your holding deposit will be retained and lost.

Client Money Protection Scheme - We are members of 'Client Money Protect' and our membership number is CMP004399.

Our Redress Scheme - The Property Ombudsman - Our Agent Number D11805.

Please visit our website - Cornerstone Estate Agents - To View Our Schedule of Fees.



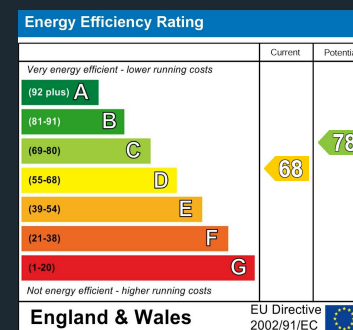


Total Area: 79.1 m² ... 852 ft²
All measurements are approximate and for display purposes only

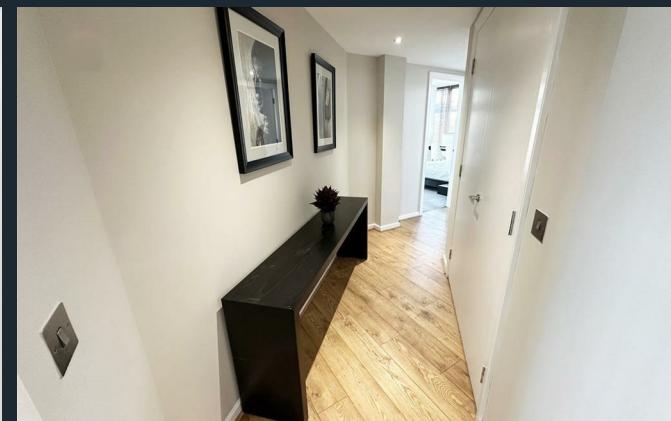
Local Authority
Leeds City Council

Council Tax Band
D

Directions



Agents Note: Whilst every care has been taken to prepare these particulars, they are for guidance purposes only. All measurements are approximate and are for general guidance purposes only and whilst every care has been taken to ensure their accuracy, they should not be relied upon and potential buyers/tenants are advised to recheck the measurements



Cornerstone Lettings
13 Stonegate Road
Leeds
West Yorkshire
LS6 4HZ

Contact
0113 2745360
office@cornerstoneleeds.co.uk
www.cornerstoneleeds.co.uk