



BRECKENRIDGE
LETTINGS



Cheniston Court, Ridgemount Road, SL5



A truly beautifully presented terraced house set in one of the most desirable roads in Sunningdale. This lovely house offers Two large double bedrooms, superb living space and a lovely courtyard private garden. Set behind electric gates you are a stones throw away from Sunningdale Station and Shops.

Available - 04/10/2024

£2000 Per Calendar Month

Unfurnished



BRECKENRIDGE LETTINGS

- Two Double Bedrooms
- Two Bathrooms
- Drawing Room
- Dining Room
- Kitchen
- Courtyard Garden





Energy Efficiency Rating		Environmental Impact (CO ₂) Rating	
Current	Potential	Current	Potential
Very energy efficient - lower running costs		Very environmentally friendly - lower CO₂ emissions	
92-100 A		92-100 A	
81-91 B		81-91 B	
69-80 C		69-80 C	
55-68 D		55-68 D	
39-54 E		39-54 E	
21-38 F		21-38 F	
1-20 G		1-20 G	
Not energy efficient - higher running costs		Not environmentally friendly - higher CO₂ emissions	
	66		90
EU Directive 2002/91/EC		EU Directive 2002/91/EC	
England & Wales		England & Wales	

All viewings are strictly by appointment or by e-mail.

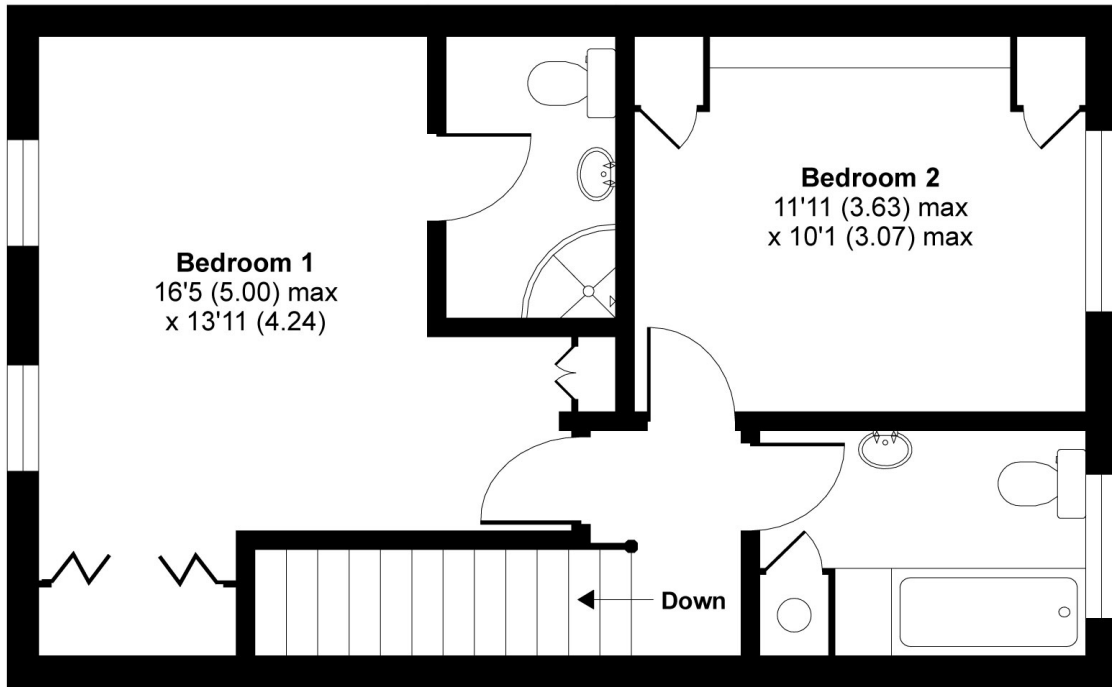
Please be advised that any information supplied by the agent is given without any warranty and all negotiations are on a subject to contract basis until a tenancy agreement has been engrossed. Satisfactory references are always required before a tenancy agreement is signed. In addition to the rental and security deposit there is a charge for the tenancy agreement and an Inventory/Check-in procedure.

These particulars or any other media, printed or downloaded, do not form part of any contract and must not be relied upon. All measurements mentioned within the particulars are approximate and are given as a guide only.

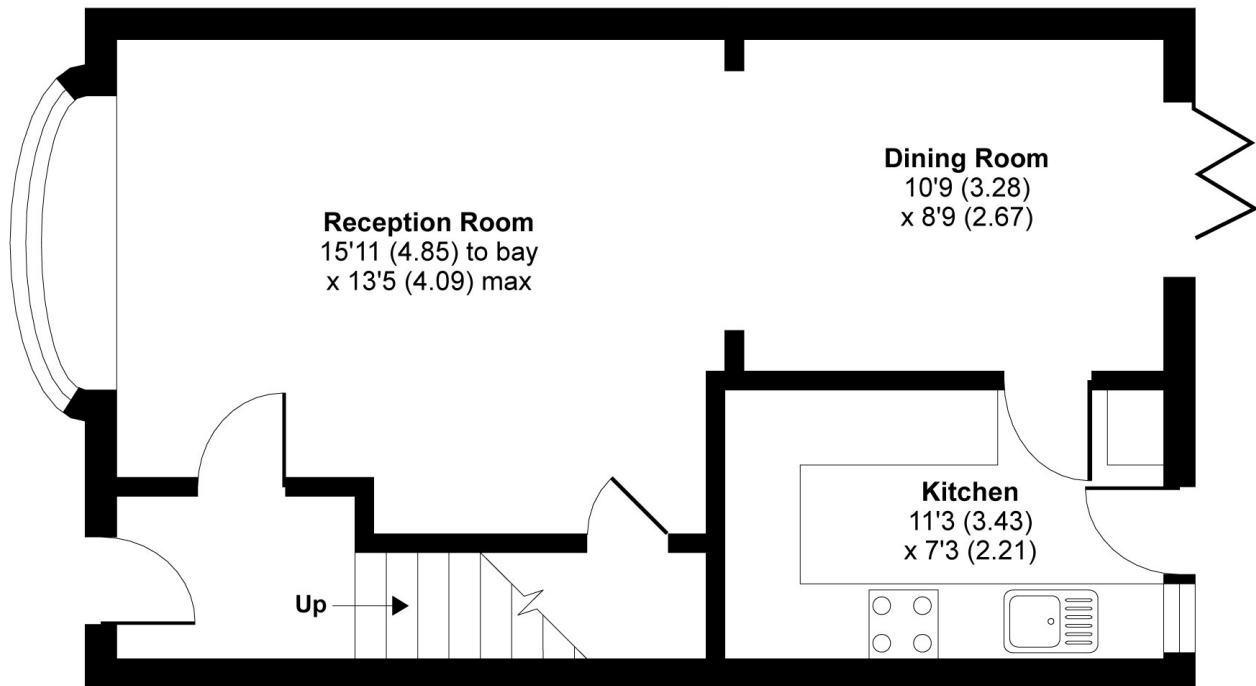
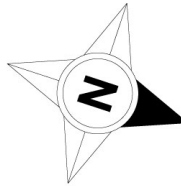
Email: contact.us@breckenridge-lettings.co.uk

Ridgemount Road, SL5

APPROX. GROSS INTERNAL FLOOR AREA 930 SQ FT 86.3 SQ METRES



FIRST FLOOR



GROUND FLOOR

Whilst every attempt has been made to ensure the accuracy of the floor plan contained here, measurements of doors, windows and rooms are approximate and no responsibility is taken for any error, omission or misstatement. These plans are for representation purposes only as defined by RICS Code of Measuring Practice and should be used as such by any prospective purchaser. Specifically no guarantee is given on the total square footage of the property if quoted on this plan. Any figure given is for initial guidance only and should not be relied on as a basis of valuation.