



BRECKENRIDGE LETTINGS

Clarence Road, Windsor, SL4



A stunning 6 bedroom Victorian detached home offering spacious living and set in the heart of Windsor. The property is available for long and short term lets.

Available - 30/07/2024

£5000 Per Calendar Month

Fully Furnished



BRECKENRIDGE LETTINGS

- Six Bedrooms
- Five Bathrooms
- Two Reception Rooms
- Kitchen/Breakfast Room
- Ample Parking
- Walking Distance of Windsor Town Centre





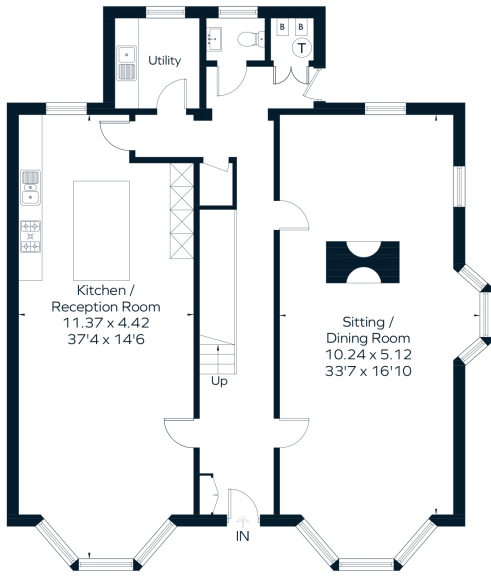
Energy Efficiency Rating		Environmental Impact (CO ₂) Rating	
Current	Potential	Current	Potential
<p>Very energy efficient - lower running costs</p> <p>(92-100) A</p> <p>(81-91) B</p> <p>(69-80) C</p> <p>(55-68) D</p> <p>(39-54) E</p> <p>(21-38) F</p> <p>(1-20) G</p> <p>Not energy efficient - higher running costs</p>		<p>Very environmentally friendly - lower CO₂ emissions</p> <p>(92-100) A</p> <p>(81-91) B</p> <p>(69-80) C</p> <p>(55-68) D</p> <p>(39-54) E</p> <p>(21-38) F</p> <p>(1-20) G</p> <p>Not environmentally friendly - higher CO₂ emissions</p>	
	64		
	46		
England & Wales EU Directive 2002/91/EC		England & Wales EU Directive 2002/91/EC	

All viewings are strictly by appointment or by e-mail.

Please be advised that any information supplied by the agent is given without any warranty and all negotiations are on a subject to contract basis until a tenancy agreement has been engrossed. Satisfactory references are always required before a tenancy agreement is signed. In addition to the rental and security deposit there is a charge for the tenancy agreement and an Inventory/Check-in procedure.

These particulars or any other media, printed or downloaded, do not form part of any contract and must not be relied upon. All measurements mentioned within the particulars are approximate and are given as a guide only.

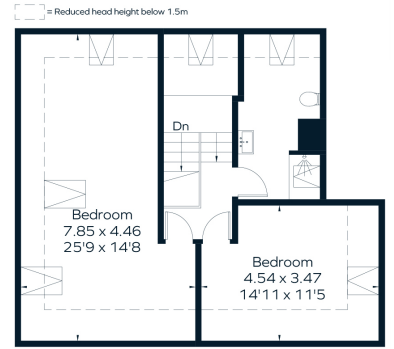
Email: contact.us@breckenridge-lettings.co.uk



Ground Floor



First Floor



Second Floor



This floor plan has been drawn in accordance with RICS Property Measurement 2nd edition.
All measurements, including the floor area, are approximate and for illustrative purposes only. @fourwalls-group.com #62504