



BRECKENRIDGE LETTINGS



Burlington House, Longcross, KT16



A spacious 2 double bedroom ground floor apartment located in the new Upper Longcross development and within a few minutes walk of Longcross station.

Available - 19/07/2024

£1600 Per Calendar Month

Unfurnished



BRECKENRIDGE LETTINGS

- Two Double Bedrooms
- Spacious Living/Dining Room
- Kitchen
- Modern Bathroom
- Two Allocated Parking Spaces
- Communal Gardens





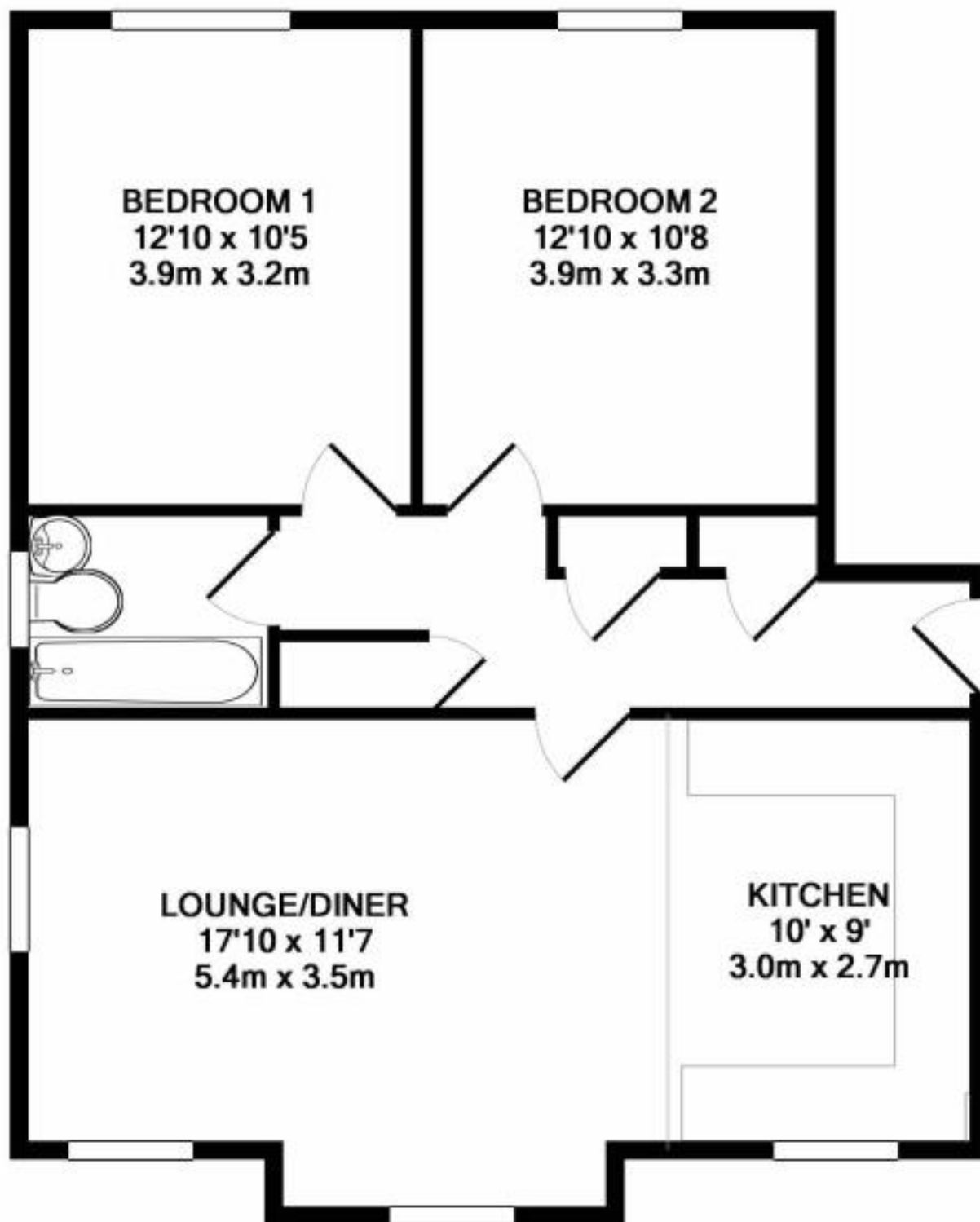
Energy Efficiency Rating		Environmental Impact (CO ₂) Rating	
Current	Potential	Current	Potential
	76	76	
EU Directive 2002/91/EC		EU Directive 2002/91/EC	

All viewings are strictly by appointment or by e-mail.

Please be advised that any information supplied by the agent is given without any warranty and all negotiations are on a subject to contract basis until a tenancy agreement has been engrossed. Satisfactory references are always required before a tenancy agreement is signed. In addition to the rental and security deposit there is a charge for the tenancy agreement and an Inventory/Check-in procedure.

These particulars or any other media, printed or downloaded, do not form part of any contract and must not be relied upon. All measurements mentioned within the particulars are approximate and are given as a guide only.

Email: contact.us@breckenridge-lettings.co.uk



TOTAL APPROX. FLOOR AREA 699 SQ.FT. (65.0 SQ.M.)

Whilst every attempt has been made to ensure the accuracy of the floor plan contained here, measurements of doors, windows, rooms and any other items are approximate and no responsibility is taken for any error, omission, or mis-statement. This plan is for illustrative purposes only and should be used as such by any prospective purchaser. The services, systems and appliances shown have not been tested and no guarantee as to their operability or efficiency can be given

Made with Metropix ©2019