



PROPERTY  
SERVICES  
LIMITED



78 Charter Avenue  
, Coventry, CV4 8ED

£750 Per Calendar Month



**\*\*SINGLE OCCUPANCY ONLY\*\***

Looking for a little luxury? Look no further than these stunning Lux-Suites (revolutionized version of an en-suite) which are available within walking distance to the University of Warwick.

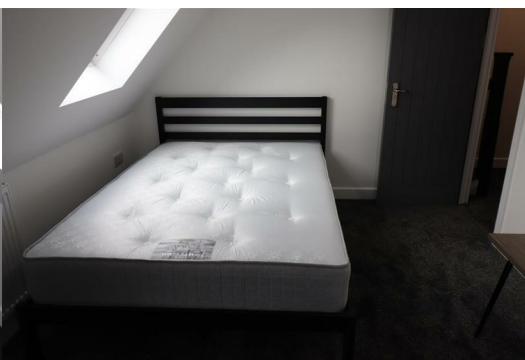
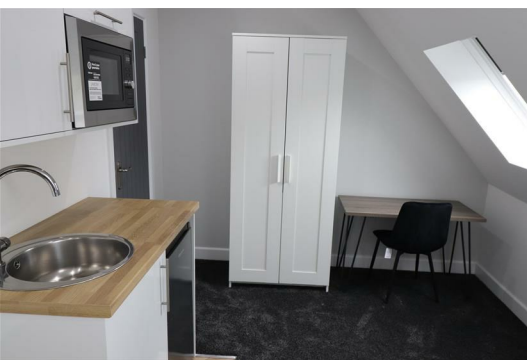
These brand new little gems are available in the perfect co-living space which also contain a large communal modern open plan kitchen/dining area, perfect for a bit of extra space when entertaining and socialising. The main communal kitchen/living area includes 2 hob/ovens, 2 fridge/freezers, and washing machine. As well as a large dining table, flat screen TV & breakfast bar

The lux-suites have been designed to really appreciate and utilise the space exceptionally well, cleverly creating a subtle dividing bed/living area space. The kitchenette is equipped for all your daily requirements including a microwave, sink and an under counter fridge.

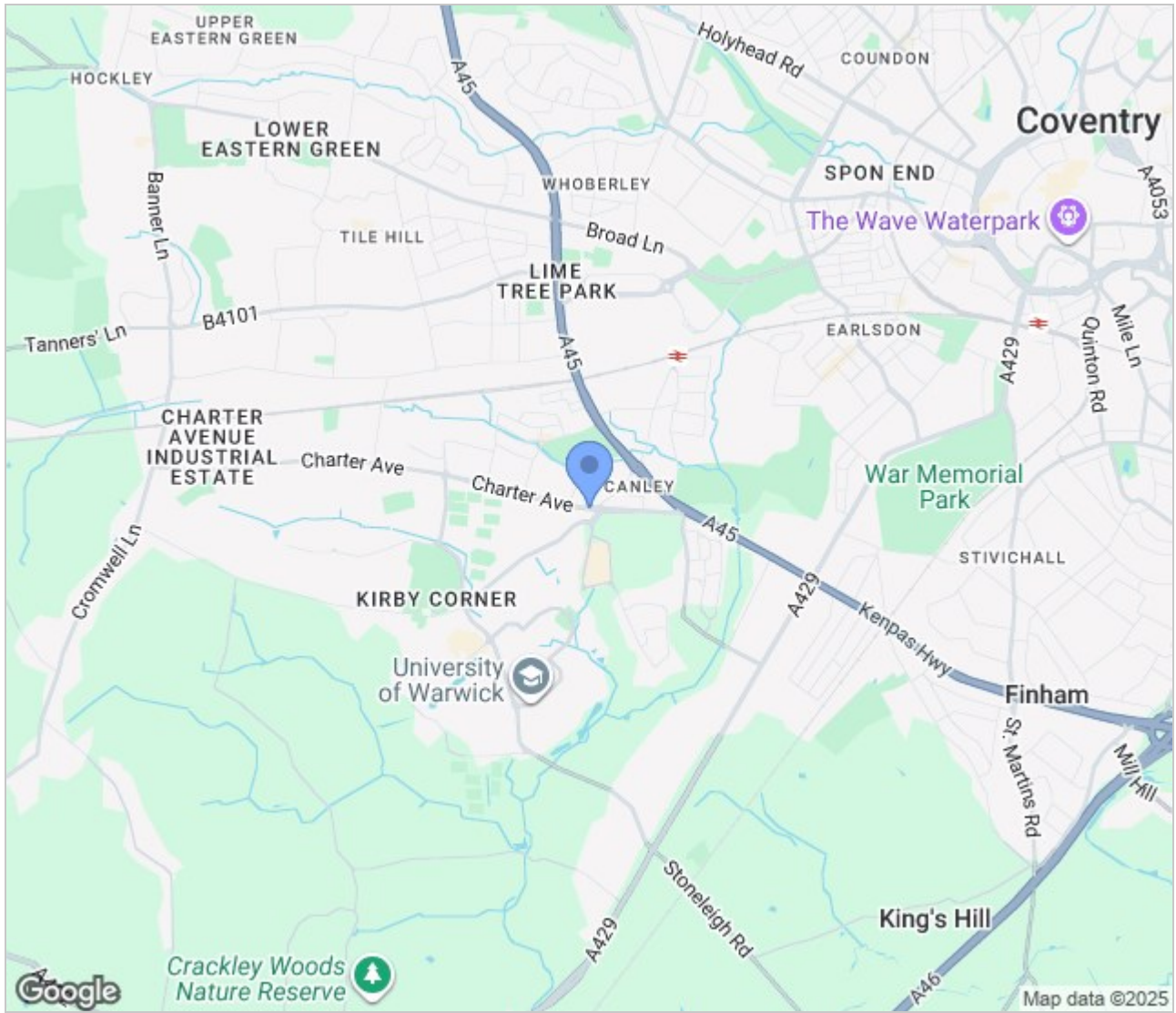
Each lux-suite includes a comfy double bed, wardrobe a desk for all your study or work requirements and an en-suite shower room.

The lux-suite comes fully furnished to a high standard throughout.

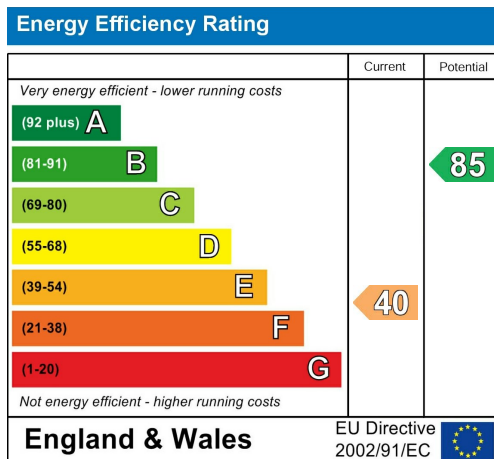
There is also a communal garden to the rear of the property.



## Area Map



## Energy Efficiency Graph



These particulars, whilst believed to be accurate are set out as a general outline only for guidance and do not constitute any part of an offer or contract. Intending purchasers should not rely on them as statements of representation of fact, but must satisfy themselves by inspection or otherwise as to their accuracy. No person in this firm's employment has the authority to make or give any representation or warranty in respect of the property.

GLB Property Services Ltd  
9 Hay Lane  
Coventry, CV1 5RJ

T. 02476 433416

[info@glbpropertyservices.com](mailto:info@glbpropertyservices.com)  
[www.glbpropertyservices.com](http://www.glbpropertyservices.com)

