



PROPERTY  
SERVICES  
LIMITED



## 14 Chester Street

Coundon, Coventry, CV1 4DJ

Offers Over £550,000

### \*Attention Investors\*

GLB Are Pleased To Present This Modern 10 Bedroom Full HMO Licenced Property Until 26/07/2023

All en-suite rooms.

Available In The Coundon Area – Excellent Location For Coventry or Warwick University As well As Major Supermarkets, Local Restaurants and Pubs. Direct Access To Coventry City Centre, Either Via Bus or Walking.

The property briefly comprises of the following,

Open plan kitchen

Kitchen includes all white goods

Lounge comes with a flat screen TV and leather sofas

Patio sliding doors leading into garden

Double & single bedrooms all with en-suite shower room

Furnished to a good standard which will suit your studies

Walking distance to Coventry University

Direct bus routes to Warwick University

Receiving a monthly rental income of £4440 on individual contracts which includes bills. Therefore an impressive yield of 8.88 %

8 x Double en-suite room & 2 x Single en-suite rooms

Council Tax Band - D

- HMO Property
- Coundon Area
- Cov/Warwick Uni
- Close to City Centre
- Modern
- En-suite Facilities

## Viewing

Please contact our GLB Office on 02476 433416 if you wish to arrange a viewing appointment for this property or require further information.

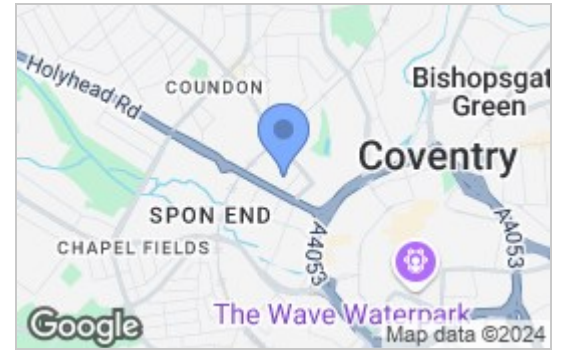




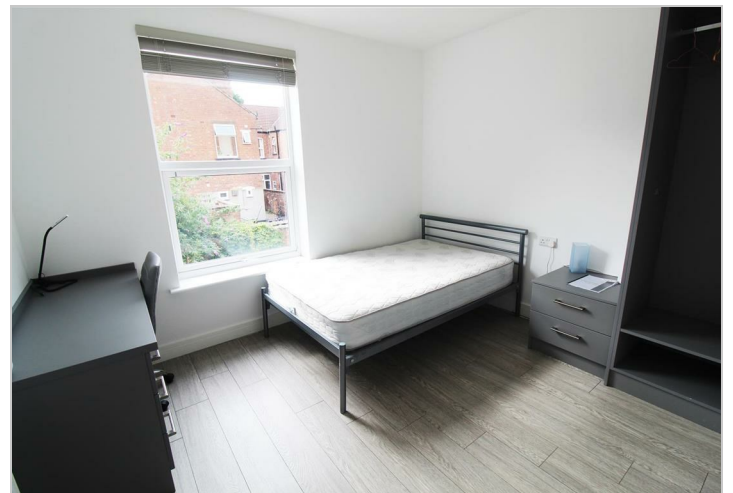
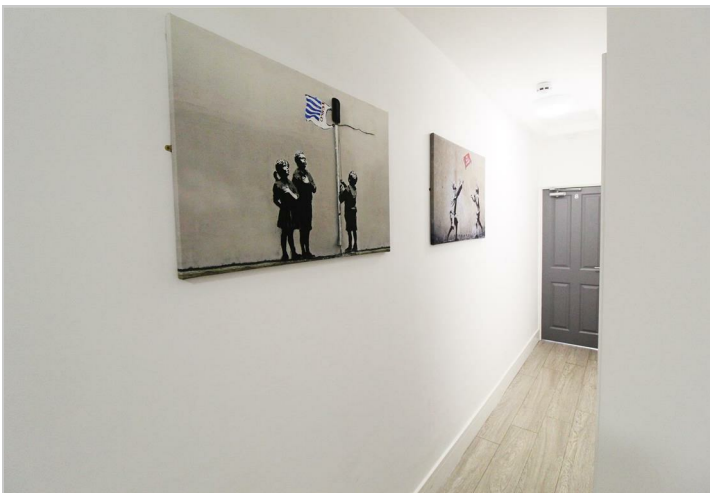
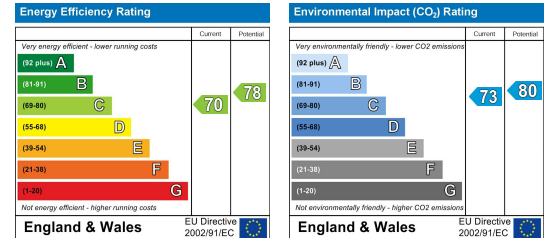
## Floor Plan



## Area Map



## Energy Efficiency Graph



These particulars, whilst believed to be accurate are set out as a general outline only for guidance and do not constitute any part of an offer or contract. Intending purchasers should not rely on them as statements of representation of fact, but must satisfy themselves by inspection or otherwise as to their accuracy. No person in this firm's employment has the authority to make or give any representation or warranty in respect of the property.

GLB Property Services Ltd  
9 Hay Lane  
Coventry, CV1 5RJ

T. 02476 433416

info@glbpropertyservices.com  
www.glbpropertyservices.com

