



Price

£265,000

Leasehold

2x  1x  1x 

**Smithsfield House,
Station Road North,
Southwater, Horsham,
West Sussex, RH13**

cubitt&west
Helping you move forwards



Main features

- Available at a 55% share or full price
- 2 bedroom apartment with allocated parking
- Great opportunity for first time buyers
- Fantastic location in village square
- Walking distance to shops, schools, transport links and Southwater Country Park

Accommodation

FIRST FLOOR

Hallway

Bathroom: 7'5 x 6'3 (2.26m x 1.91m)

Lounge/Kitchen: 20'8 x 12'8 (6.30m x 3.86m)

Bedroom 1: 16'9 x 11'6 (5.11m x 3.51m)

En-suite: 6'11 x 4'11 (2.11m x 1.50m)

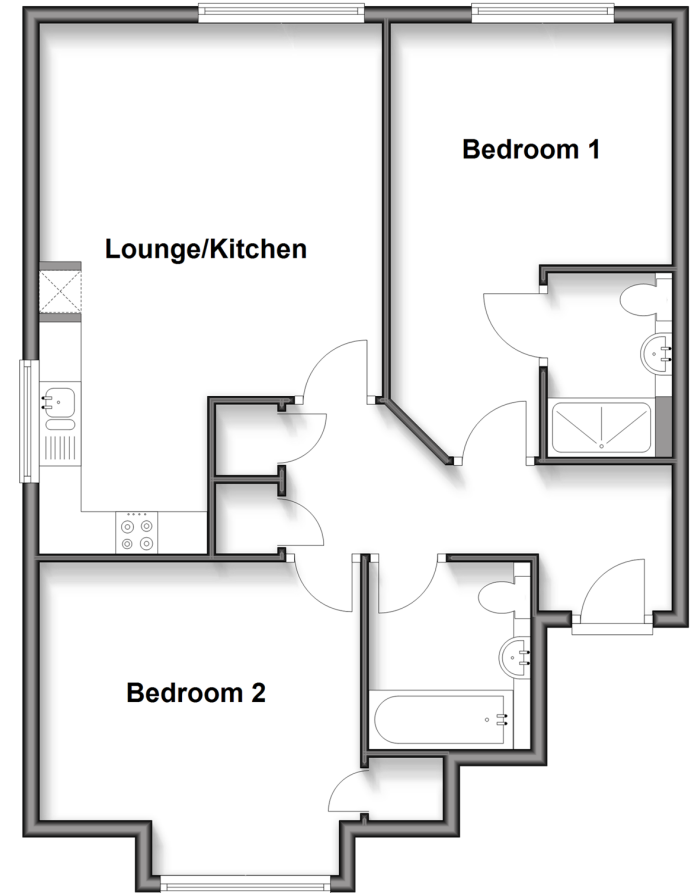
Bedroom 2: 12'9 x 12'3 (3.89m x 3.74m)

OUTSIDE

Allocated Parking

First Floor

Approx. 67.7 sq. metres (728.3 sq. feet)



Call Southwater - 01403 731901 ■ cubittandwest.co.uk

- Legal advice should be taken to verify fixtures/fittings, planning, alterations and/or lease details
- Appliances & services are untested, dimensions are approximate and floor plans are not to scale