



Price
£155,000

Leasehold

1x  1x  1x 

**Mermaid House, Cross
Street, Portsmouth,
Hampshire, PO1**

cubitt&west
Helping you move forwards



Main features

- Price for a 40% share of the property is £62,000, the remaining 60% can be purchased
- Offered with no forward chain
- Secure allocated parking space
- Bright and modern decor throughout
- Great location

Accommodation

SECOND FLOOR

Entrance Hallway

Lounge Area: 16'0 x 11'1 (4.88m x 3.38m)

Kitchen Area: 9'1 x 6'11 (2.77m x 2.11m)

Bedroom: 12'1 x 10'4 (3.69m x 3.15m)

Bathroom

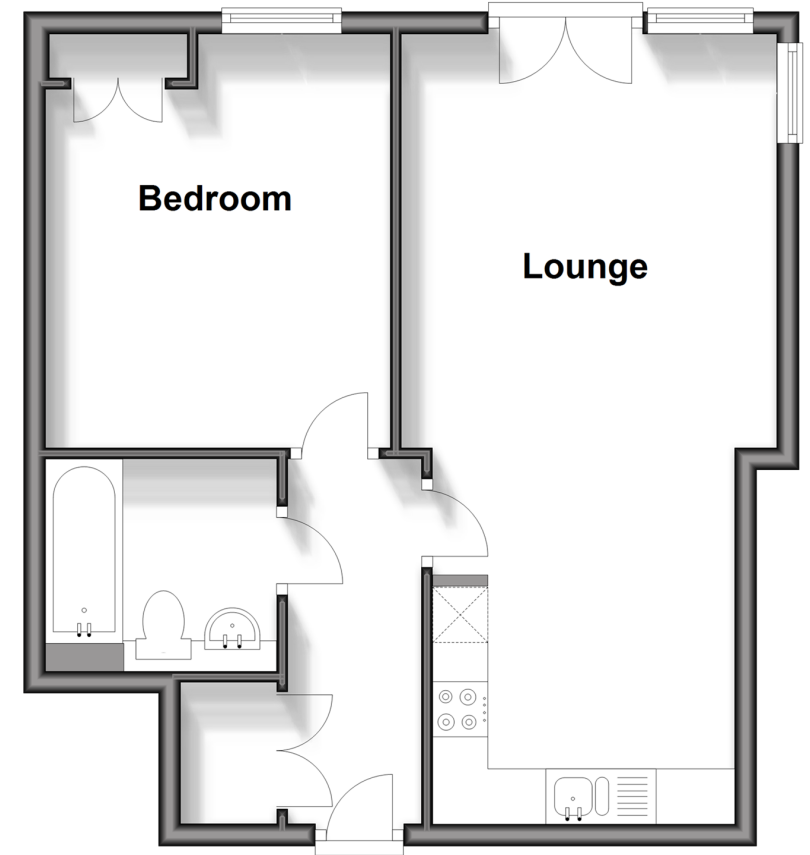
OUTSIDE

Communal Garden

Allocated Parking

Second Floor

Approx. 44.5 sq. metres (478.7 sq. feet)



Call Southsea - 023 9229 6396 ■ cubittandwest.co.uk

- Legal advice should be taken to verify fixtures/fittings, planning, alterations and/or lease details
- Appliances & services are untested, dimensions are approximate and floor plans are not to scale



42227314/20241024/JT/SA