



Price

£240,000

Leasehold

1x  1x  1x 

**Picture House,
Marketfield Way,
Redhill, Surrey, RH1**

cubitt&west
Helping you move forwards



Main features

- 40% Shared Ownership
- Modern Open Plan living with electric heating
- Centrally located only 5 minutes walk to major transportation links and High Street
- Air Filtration System
- Balcony

Accommodation

FIRST FLOOR

Hallway

Lounge/Kitchen: 25'8 x 10'5 (7.83m x 3.18m)

Balcony

Bedroom : 14'4 x 9'8 (4.37m x 2.95m)

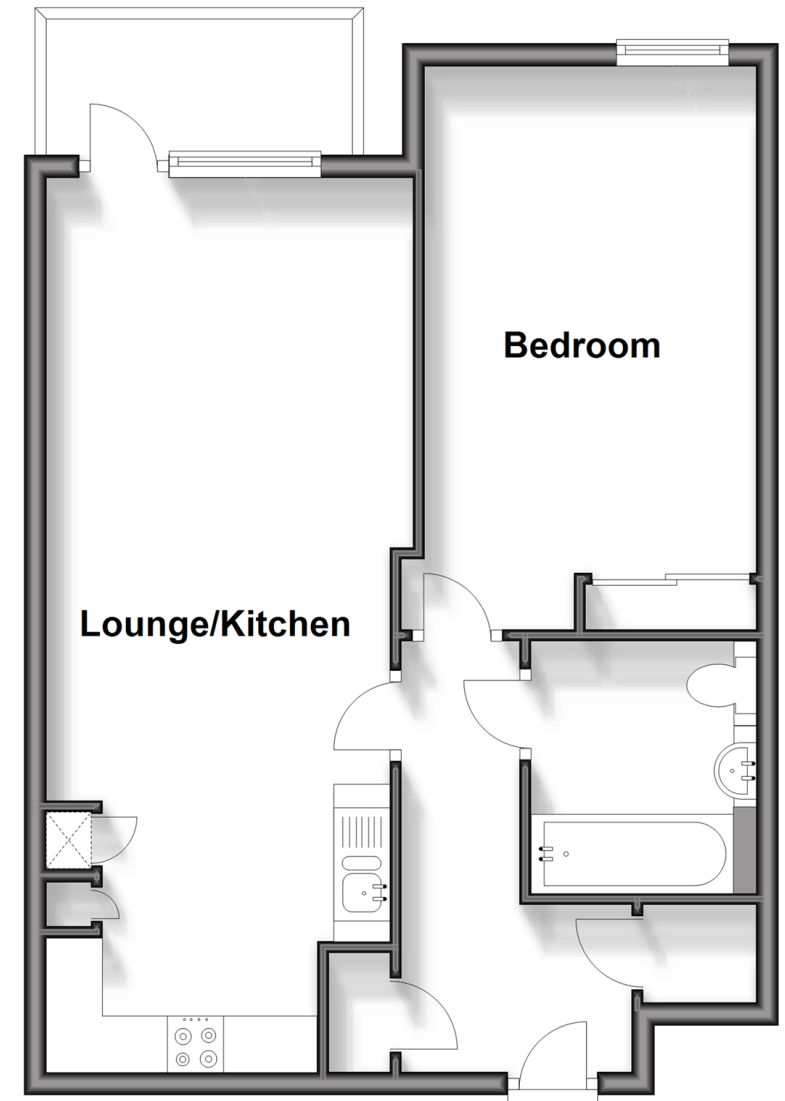
Bathroom: 7'3 x 6'5 (2.21m x 1.96m)

OUTSIDE

Communal grounds

First Floor

Approx. 52.3 sq. metres (562.7 sq. feet)



Call Redhill - 01737 778866 ■ cubittandwest.co.uk

- Legal advice should be taken to verify fixtures/fittings, planning, alterations and/or lease details
- Appliances & services are untested, dimensions are approximate and floor plans are not to scale