



Price

£225,000

Leasehold

1x  1x  1x 

Hengist Way,  
Wallington, Surrey, SM6

**cubitt & west**  
Helping you move forwards



## Main features

- Modern top floor apartment with allocated parking
- Part ownership at 60% available at £135,000 or 100% at £225,000
- Spacious open plan living
- Set in a quiet residential area close to amenities and high street

## Accommodation

### SECOND FLOOR

Entrance Hall

Lounge: 13'4 x 11'8 (4.07m x 3.56m)

Kitchen: 9'3 x 8'11 into fitted units (2.82m x 2.72m)

Bedroom: 11'7 x 10'3 (3.53m x 3.13m)

Bathroom: 7'8 x 5'5 (2.34m x 1.65m)

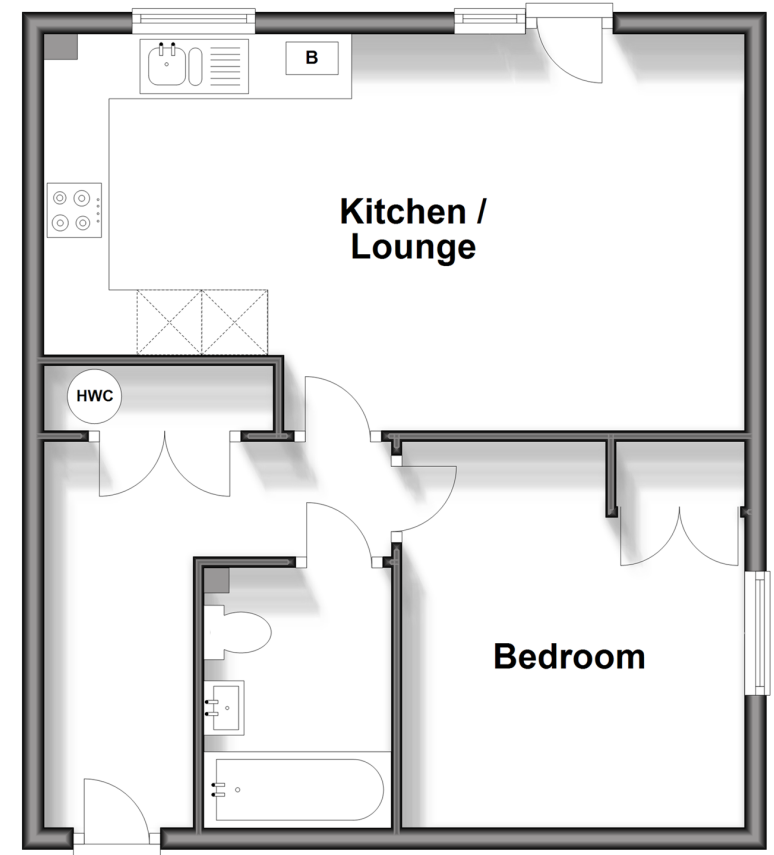
### OUTSIDE

Allocated Parking Space

Communal Gardens

## Second Floor

Approx. 47.1 sq. metres (506.7 sq. feet)



Call Wallington - 020 8647 0011 ■ [cubittandwest.co.uk](http://cubittandwest.co.uk)

- A private rental licensing scheme applies to some properties in this area, please contact us before proceeding
- Legal advice should be taken to verify fixtures/fittings, planning, alterations and/or lease details
- Appliances & services are untested, dimensions are approximate and floor plans are not to scale



22116511/20240416/GG/NL