



Price
£415,000

Leasehold

3x  1x  1x 

**Longley Road,
Chichester, West
Sussex, PO19**

cubitt & west
Helping you move forwards



Main features

- **Fantastic sized terraced house arranged over 3 floors**
- **A 25% share can be purchased for £103,750 (or up to 100% for £415,000)**
- **Award winning development**
- **Only a short walk to the city centre**
- **Benefits from an allocated parking space**
- **Close to Havenstoke & Oaklands Parks**

Accommodation

GROUND FLOOR

Hallway
 Kitchen: 8'5 x 7'5 (2.57m x 2.26m)
 Cloakroom
 Lounge/Diner: 15'4 x 14'8 (4.68m x 4.47m)

FIRST FLOOR

Landing
 Bedroom 2: 14'8 into alcove x 13'4 (4.47m x 4.07m)
 Bedroom 3: 14'11 x 7'7 (4.55m x 2.31m)
 Family Bathroom

SECOND FLOOR

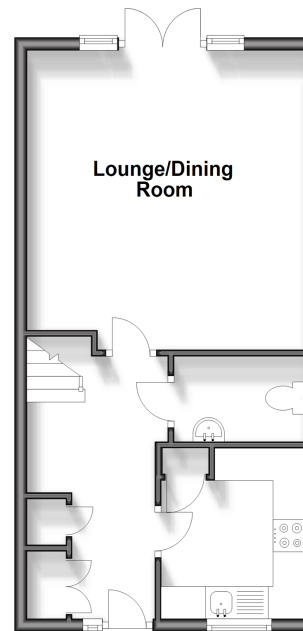
Landing
 Bedroom 1: 11'8 into recess x 11'8 (3.56m x 3.56m)
 Store Room: 28'10 into eaves x 14'8 (8.79m x 4.47m)

OUTSIDE

Allocated Parking
 Rear Garden

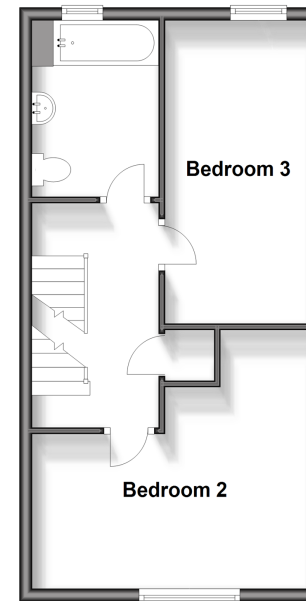
Ground Floor

Approx. 38.9 sq. metres (418.9 sq. feet)



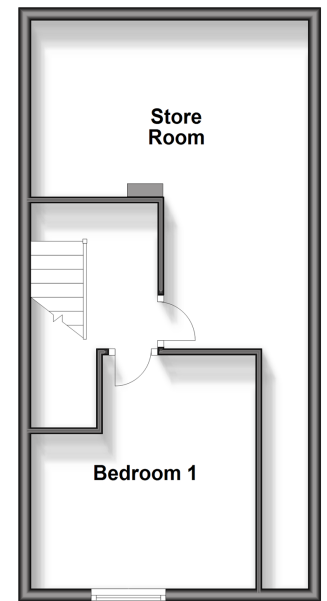
First Floor

Approx. 38.9 sq. metres (418.9 sq. feet)



Second Floor

Approx. 38.9 sq. metres (418.9 sq. feet)



Call Chichester - 01243 786581 ■ cubittandwest.co.uk

■ Legal advice should be taken to verify fixtures/fittings, planning, alterations and/or lease details

■ Appliances & services are untested, dimensions are approximate and floor plans are not to scale



40414923/20240220/KF/JH