



Price

£300,000

Leasehold

2x  1x  1x 

**Royal Sussex House,
Donegall Avenue,
Chichester, West
Sussex, PO19**

cubitt & west
Helping you move forwards



Main features

- Great sized first floor apartment with private balcony
- Shared Ownership - 35% share for £105,000 or option to purchase up to 100% (£300,000)
- Located in the highly desirable Roussillon Park development
- Beautiful views over communal gardens
- Secure communal entrance & bike store
- Bright & spacious accommodation throughout
- Only a short walk into the city centre

Accommodation

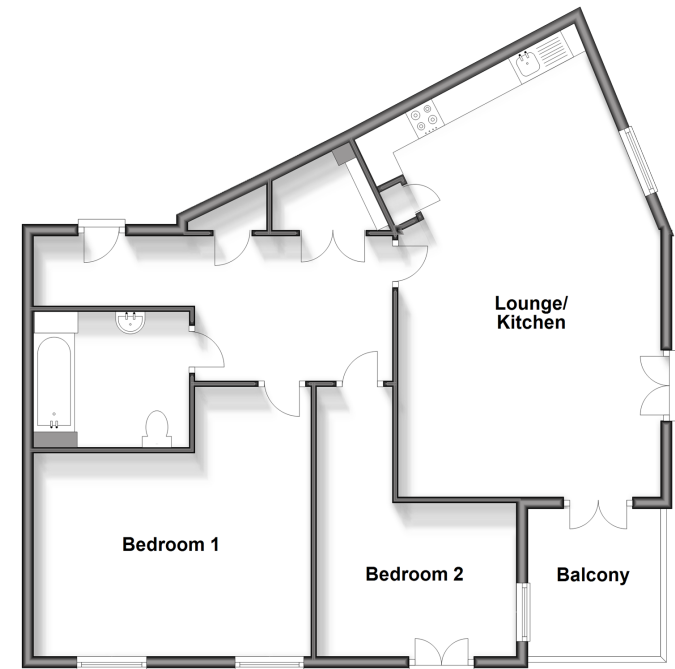
FIRST FLOOR

- Entrance Hall
- Lounge/Kitchen: 24'0 maximum x 15'6 maximum (7.32m x 4.73m)
- Balcony
- Bedroom 1: 15'6 x 15'1 (4.73m x 4.60m)
- Bedroom 2: 11'2 x 8'6 (3.41m x 2.59m)
- Bathroom

OUTSIDE

- Allocated Parking
- Communal Gardens
- Bike & Bin Stores

First Floor
Approx. 84.6 sq. metres (910.5 sq. feet)



Call Chichester - 01243 786581 ■ cubittandwest.co.uk

■ Legal advice should be taken to verify fixtures/fittings, planning, alterations and/or lease details

■ Appliances & services are untested, dimensions are approximate and floor plans are not to scale



40414825/20231207/KF/JH