



5 Guilder Lane, Salisbury, Wiltshire, SP1 1HW

£995 PCM

## About The Property

A well-presented period home within level walking distance to the City centre of Salisbury.

On the ground floor, there is a sitting room with laminate flooring and a feature fireplace, a fitted kitchen with an electric oven and hob, and space for a washing machine and fridge/freezer.

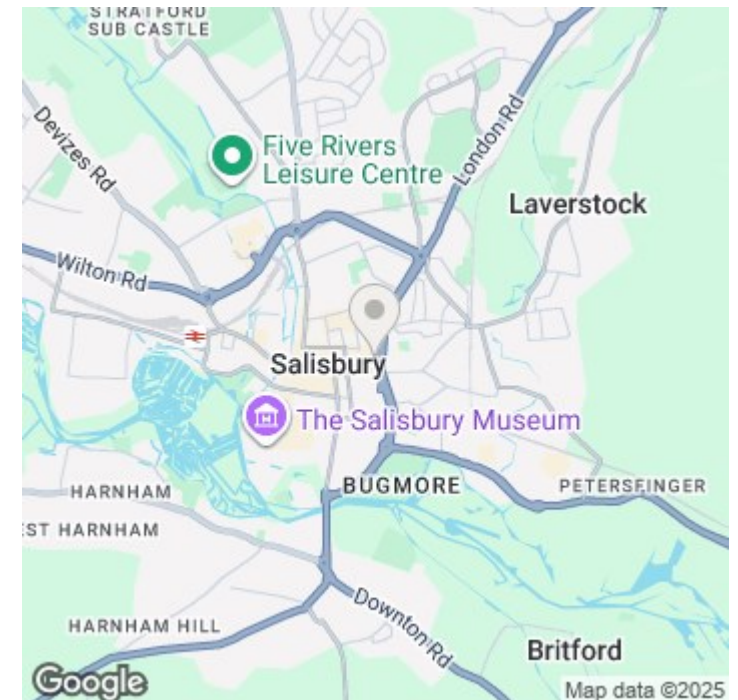
On the first floor, there is a double bedroom with a built-in wardrobe and feature fireplace. Bathroom with shower over the bath and an airing cupboard. The second bedroom is on the second floor.

Electric heating.

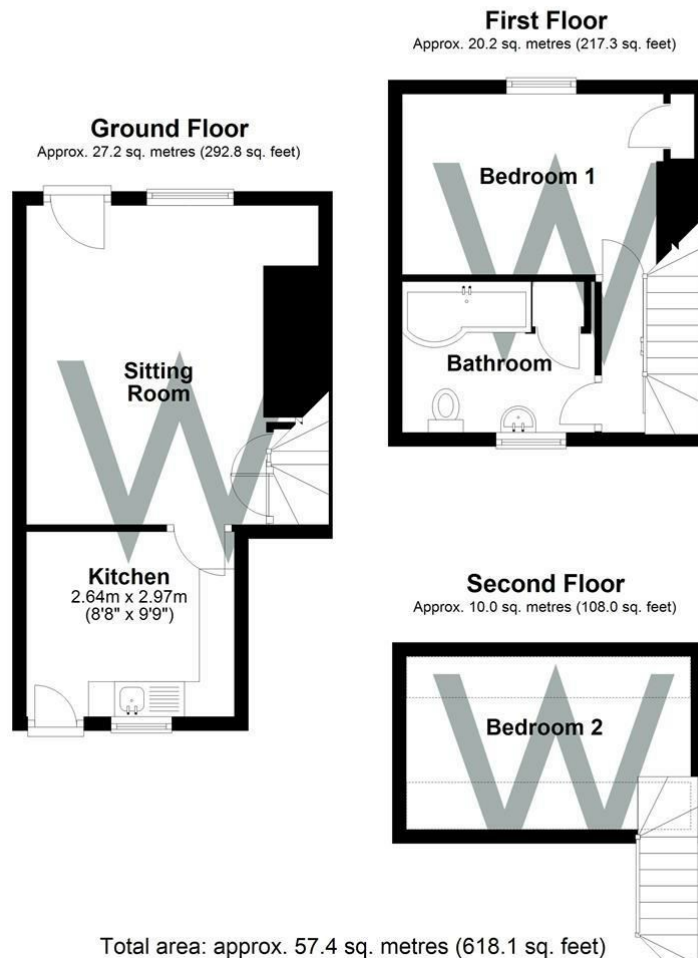
There is a small courtyard area with steps leading to a larger lawn area. Residents permit parking. Garage available by separate negotiation.



- Grade II listed mid terrace house
- Just a short walk into the city centre
- Living room with storage cupboard.
- Modern fitted kitchen
- Double bedroom with fitted cupboard to 1st floor
- Bathroom with electric shower over bath
- Second bedroom to second floor
- Small courtyard with steps to open lawn area
- On street residents permit parking
- Electric heating







## Further Information

Let available date: 26th January 2026  
NB: This date is provisional and will only be confirmed once referencing has been successfully completed.

Property type: House - Mid Terrace

Furnish type: Unfurnished

Deposit: £1,145

Local authority: Wiltshire Council

Council Tax: Band C

EPC: E(49)

### Energy Efficiency Rating

	Current	Potential
Very energy efficient - lower running costs		
(92 plus) <b>A</b>		<b>91</b>
(81-91) <b>B</b>		
(69-80) <b>C</b>		
(55-68) <b>D</b>		
(39-54) <b>E</b>	<b>49</b>	
(21-38) <b>F</b>		
(1-20) <b>G</b>		
Not energy efficient - higher running costs		
<b>England &amp; Wales</b>		EU Directive 2002/91/EC 