



25 Three Cuppes Lane, Salisbury, Wiltshire, SP1 1ER

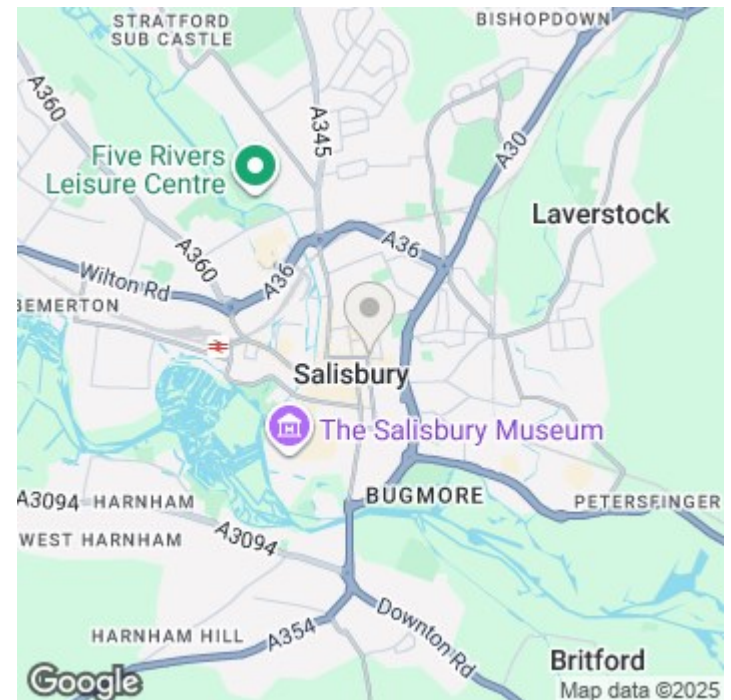
£950 PCM



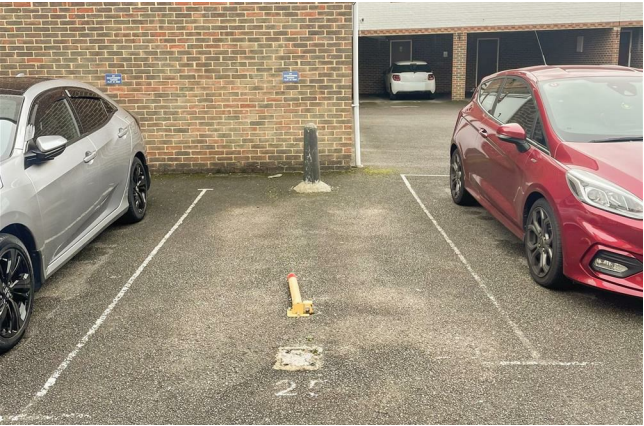
## About The Property

A one-bedroom ground-floor flat located in the heart of Salisbury city centre. The property benefits from spacious accommodation, comprising a large open-plan sitting room and kitchen with a breakfast bar. The kitchen is equipped with a fridge freezer, washing machine, electric oven, and hob. There is a well-proportioned double bedroom featuring a large wardrobe. The bathroom includes a full-sized bath with a shower. The property is electrically heated, offered part furnished, and includes one allocated parking space.

- Ground floor flat
- One bedroom
- Central city location
- Washing machine and fridge freezer provided
- One allocated parking space
- Electric Heating
- Council tax band B
- Long term tenancy



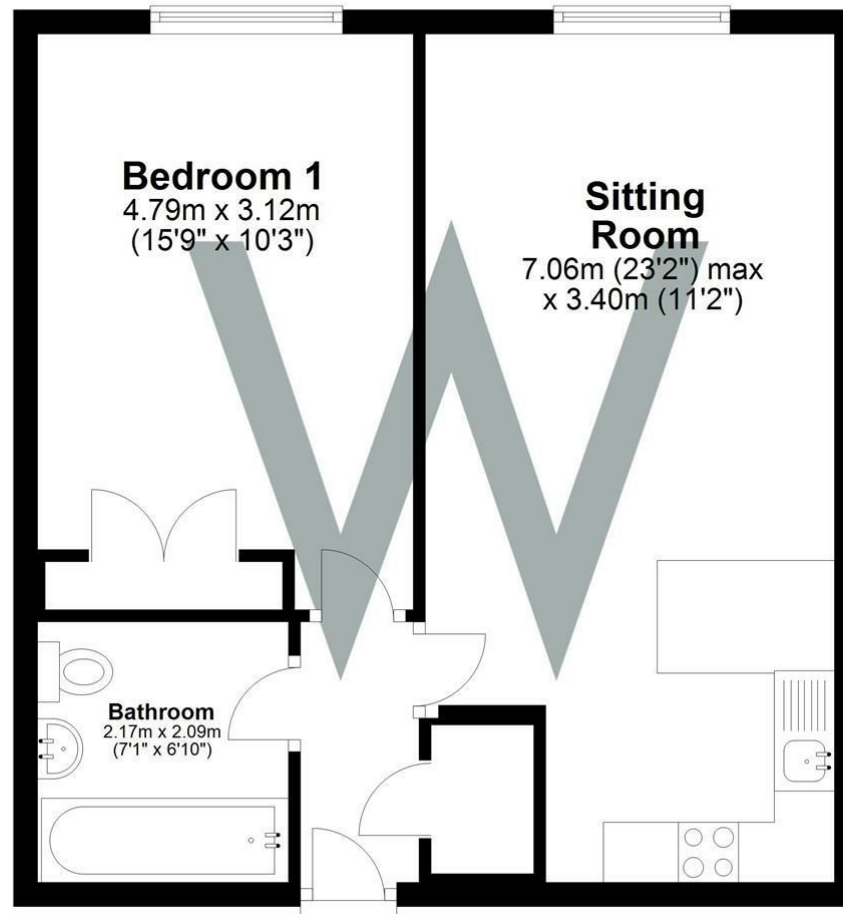






## Ground Floor

Approx. 46.7 sq. metres (503.2 sq. feet)



## Further Information

Let available date: 24th November 2025 NB: This date is provisional and will only be confirmed once referencing has been successfully completed.

Property type: Flat - Ground Floor

Furnish type: Part furnished

Deposit: £1,095

Local authority: Wiltshire Council

Council Tax: Band B

EPC: D(65)

### Energy Efficiency Rating

|   | Current | Potential               |
|---|---------|-------------------------|
| Very energy efficient - lower running costs |         |                         |
| (92 plus) <b>A</b>                          |         |                         |
| (81-91) <b>B</b>                            |         |                         |
| (69-80) <b>C</b>                            |         |                         |
| (55-68) <b>D</b>                            | 65      | 78                      |
| (39-54) <b>E</b>                            |         |                         |
| (21-38) <b>F</b>                            |         |                         |
| (1-20) <b>G</b>                             |         |                         |
| Not energy efficient - higher running costs |         |                         |
| England & Wales                             |         | EU Directive 2002/91/EC |