



RESIDENTIAL ESTATE AGENTS  
PROPERTY LETTING & MANAGING AGENTS  
VALUERS & PROPERTY CONSULTANTS  
CHARTERED SURVEYORS

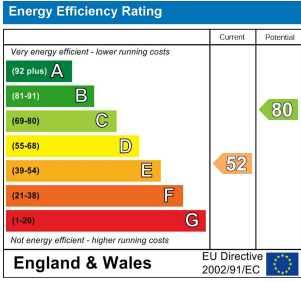
**01722 336422**  
[www.hwwhite.co.uk](http://www.hwwhite.co.uk) WEB



**Windsor Street,**

**£850 PCM**

**FFF, 60 Windsor Street, Salisbury, Wiltshire, SP2 7EA**



A spacious, one bedroom, unfurnished, first floor flat, situated close to the train station and city centre with on street permit parking.

Accommodation comprises:

Shared entrance hall, then door to first floor. Fitted kitchen with an electric oven and hob and space for a fridge, inner hallway with plumbing for a washing machine, fitted bathroom with a shower over the bath. Spacious living room with feature fireplace. Double bedroom.

The property benefits from economy 7 heating, double glazing and residents permit parking.

Accommodation comprises:

Shared entrance hall, then door to first floor. Fitted kitchen with an electric oven and hob and space for a fridge, inner hallway with plumbing for a washing machine, fitted bathroom with a shower over the bath. Spacious living room with feature fireplace. Double bedroom.

The property benefits from economy 7 heating, double glazing and residents permit parking.

A Note From the Whites Letting Team  
Thank you for considering Whites as your letting agent. As ; all prospective tenants. Below we've outlined how we mana

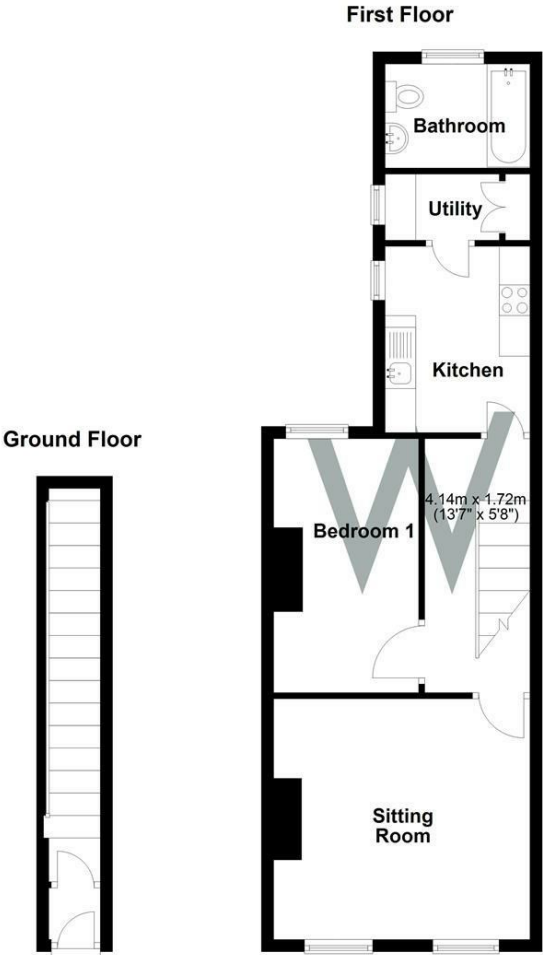
To begin the process of enquiring about one of our properti possible with a short questionnaire to complete. Once we've considered as having formally enquired about the property.

Due to the high level of interest we often receive, we regret ! the first round. If the property remains available, an addition: update the property listing accordingly.

/ providing a fair, efficient, and transparent service for ocess.

information, and we'll get back to you as soon as lease note, only those who complete this step will be

» received and arrange viewings in groups of up to 4 for eview enquiries. If this happens, we'll do our best to



01722 336422

47 Castle Street, Salisbury SP1 3SP 01722 320600 FAX  
residential-sales@hwwhite.co.uk E-MAIL www.hwwhite.co.uk WEB