



The Old Dairy 1a Belle Vue Road, Salisbury, Wiltshire, SP1 3YD

£1,050 PCM

About The Property

An immaculately presented one bedroom detached bungalow in prime residential area within level walking distance of the city centre, with a large courtyard garden.

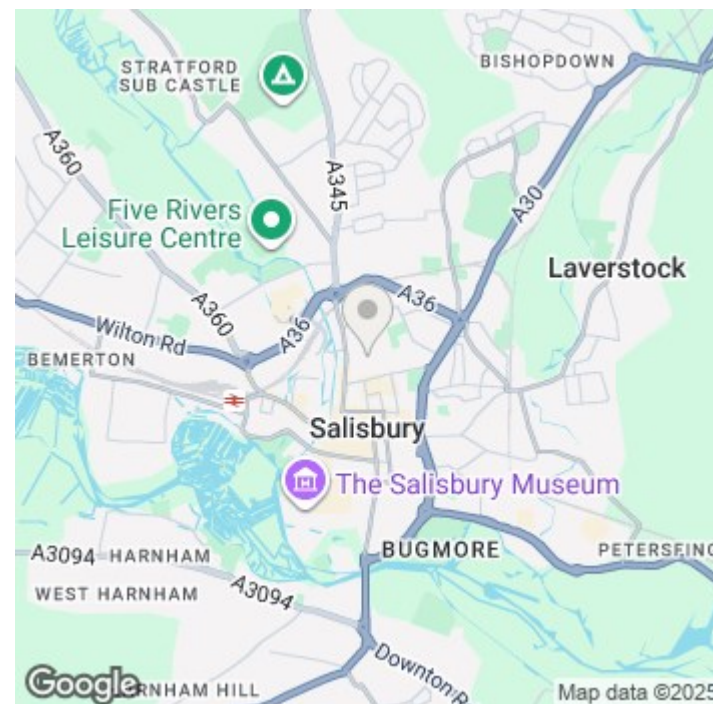
Formerly a dairy shop in the 1930's, the converted accommodation comprises; entrance hallway with neatly appointed downstairs cloakroom/wc and large under stairs storage cupboard. Double aspect sitting room with impressive bi-folding doors extending the width of the room and opening to the private courtyard. Modern fully fitted kitchen complete with range of wall and base units together with appliances including; built-in oven and gas hob, integral d/w, w/m and freestanding f/f. French doors leading to the garden.

Upstairs accommodation comprises an exceptionally bright and airy landing area with Velux skylight windows. Sizeable bedroom with storage unit. Modern bathroom comprising white suite; bath with thermostatic deluge shower over and separate bath mixer tap, wash hand basin and WC, opaque Velux skylight and further glazing on gable end wall. Off the landing is a large storage cupboard housing a Worcester combi boiler. The landing area is spacious enough to provide a very comfortable home-working area.

Outside there is a landscaped courtyard garden complete with shed, patio and brick borders. On street permit parking.

The property is offered unfurnished and benefits from gas central heating and double glazing.

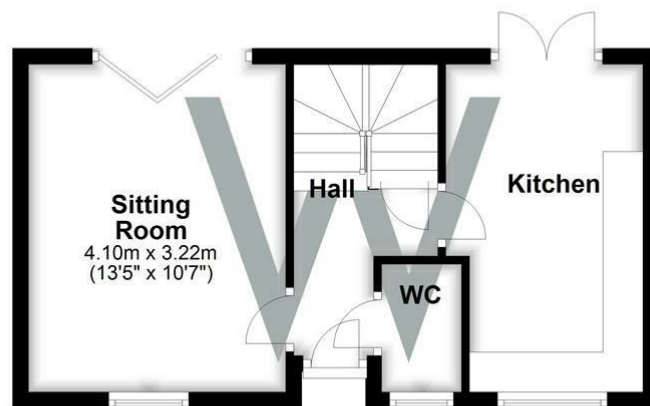
- Detached one bedroom home.
- Situated in a prime residential area within the city.
- Modern fitted kitchen. with dining area.
- Sitting room with doors to garden.
- Large landing with study area.
- Double bedroom with storage.
- Modern bathroom with shower over bath.
- Large enclosed courtyard.
- On street permit parking.
- Gas central heating.





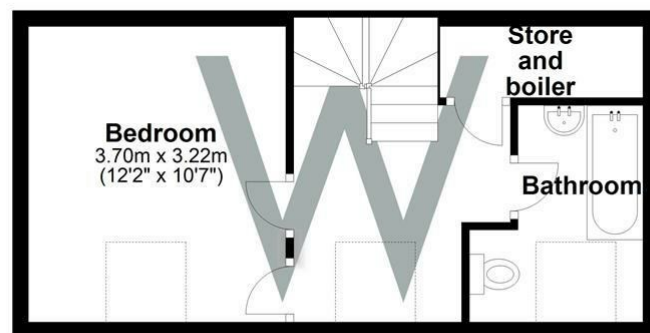
Ground Floor

Approx. 31.0 sq. metres (333.5 sq. feet)



First Floor

Approx. 28.4 sq. metres (306.1 sq. feet)



Total area: approx. 59.4 sq. metres (639.5 sq. feet)

Further Information

Let available date: 20th October 2025 NB: This date is provisional and will only be confirmed once referencing has been successfully completed.

Property type: House - Detached

Furnish type: Unfurnished

Deposit: £1,210

Local authority: Wiltshire

Council Tax: Band B

EPC: C(76)

Energy Efficiency Rating

	Current	Potential
Very energy efficient - lower running costs		
(92 plus) A		90
(81-91) B		
(69-80) C	76	
(55-68) D		
(39-54) E		
(21-38) F		
(1-20) G		
Not energy efficient - higher running costs		
England & Wales		EU Directive 2002/91/EC 