



30 Nursery Road, Salisbury, Wiltshire, SP2 7HX

£1,150 PCM

About The Property

A deceptively spacious three bedroom, unfurnished terraced house within easy walking distance to the city centre with enclosed garden and on street parking.

Accommodation Comprises:

Entrance hall. Sitting room with built in cupboard and archway to dining room with feature fireplace and under stairs cupboard. Kitchen with electric cooker and space for white goods. Lean to/rear porch with door onto the garden.

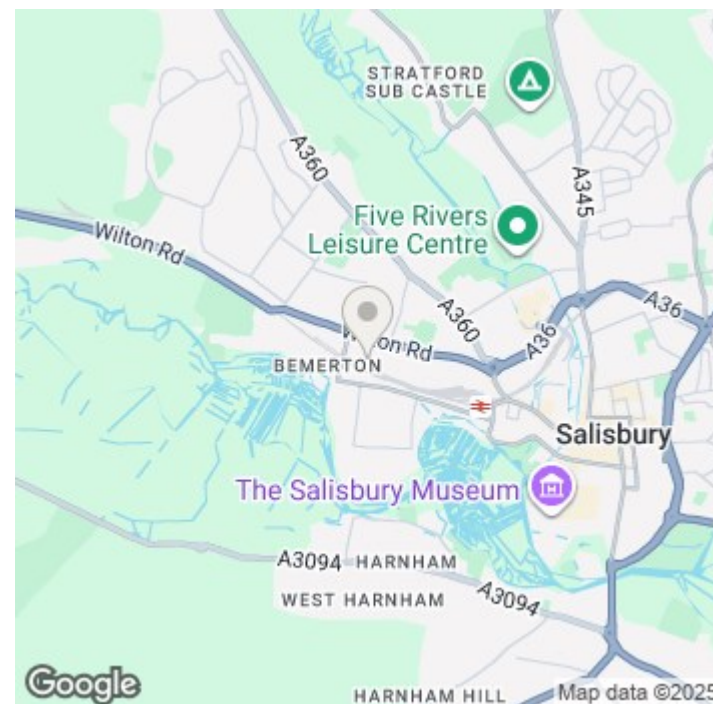
Upstairs; spacious bathroom with shower over the bath. Bedroom one, double with fitted wardrobes. Bedroom two, large single/small double. Stairs to a third double bedroom in the loft conversion with storage cupboard.

Outside; enclosed low maintenance garden with decking.

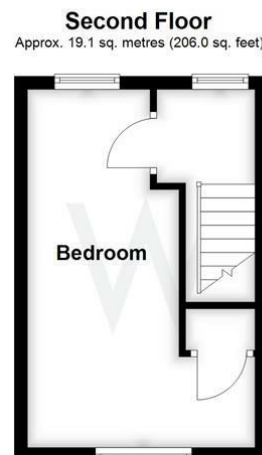
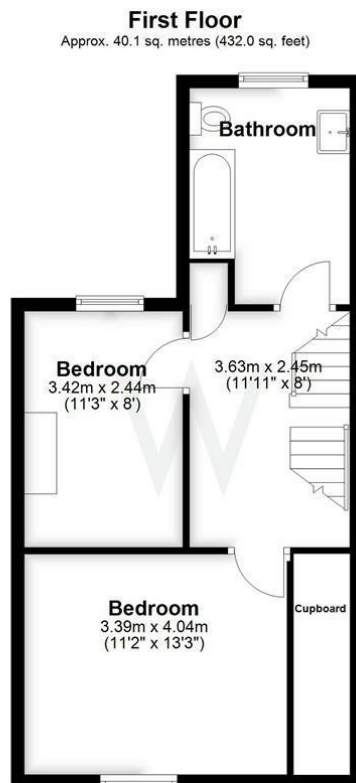
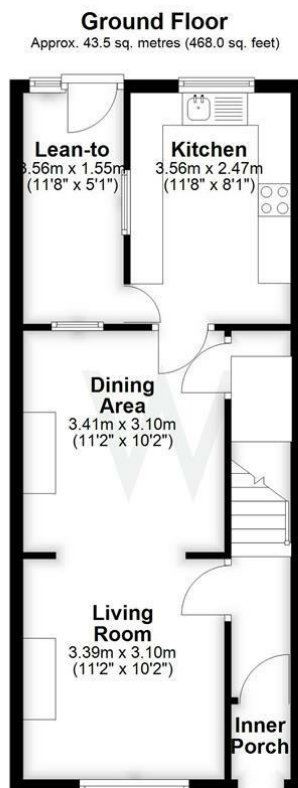
The property benefits from being re-decorated throughout, double glazing, economy 7 heating and on-street parking.



- Spacious three bedroom house.
- Re-decorated throughout.
- Sitting room with archway to dining room.
- Kitchen with electric cooker and space for appliances.
- Lean to/storage room.
- Two bedrooms and spacious bathroom to first floor.
- Double bedroom within loft conversion.
- Enclosed, low maintenance rear garden.
- On street parking.
- Council tax Band C.







Total area: approx. 102.7 sq. metres (1105.9 sq. feet)

Further Information

Let available date: 5th September 2025 NB: This date is provisional and will only be confirmed once referencing has been successfully completed.

Property type: House - Terraced

Furnish type: Unfurnished

Deposit: £1,325

Local authority: Wiltshire

Council Tax: Band C

EPC: E(49)

Energy Efficiency Rating

	Current	Potential
Very energy efficient - lower running costs		
(92 plus) A		
(81-91) B		
(69-80) C		77
(55-68) D		
(39-54) E	49	
(21-38) F		
(1-20) G		
Not energy efficient - higher running costs		
England & Wales		EU Directive 2002/91/EC 