



17 Nursery Road, Salisbury, Wiltshire, SP2 7HX

£1,150 PCM

Accommodation comprises:

Entrance into a sitting room with fitted shelving and feature fireplace. Archway to dining room with built in shelving and storage cupboard. Kitchen with hand painted units, gas cooker and space for a washing machine, dishwasher and fridge; door to the garden.

Upstairs; large bathroom with airing cupboard and shower over the bath. Bedroom one, double (front) with fitted wardrobes and wooden panelling. Bedroom two, double with painted wooden floorboards and fitted wardrobe.

Outside; enclosed rear garden with gate to rear access, wooden decking and storage shed.

The property benefits from a newly fitted gas boiler, double glazing and on street parking.

A Note From the Whites Letting Team

Thank you for considering Whites as your letting agent. As a proud member of the Royal Institution of Chartered Surveyors (RICS), we aspire to uphold its core values by providing a fair, efficient, and transparent service for all prospective tenants. Below we've outlined how we manage property enquiries and applications to help set expectations and guide you through the letting application process.

To begin the process of enquiring about one of our properties, please click the 'Request Further Details/Info' button on the property listing. This will send us your contact information, and we'll get back to you as soon as possible with a short questionnaire to complete. Once we've received your completed questionnaire, your enquiry will be registered with the relevant Property Manager. Please note, only those who complete this step will be considered as having formally enquired about the property.

Due to the high level of interest we often receive, we regret that we aren't often able to offer everyone a viewing. Where possible, we handle enquiries in the order they are received and arrange viewings in groups of up to 4 for the first round. If the property remains available, an additional round of viewings may be scheduled. To manage expectations, we may also temporarily pause viewings to review enquiries. If this happens, we'll do our best to update the

property listing accordingly.

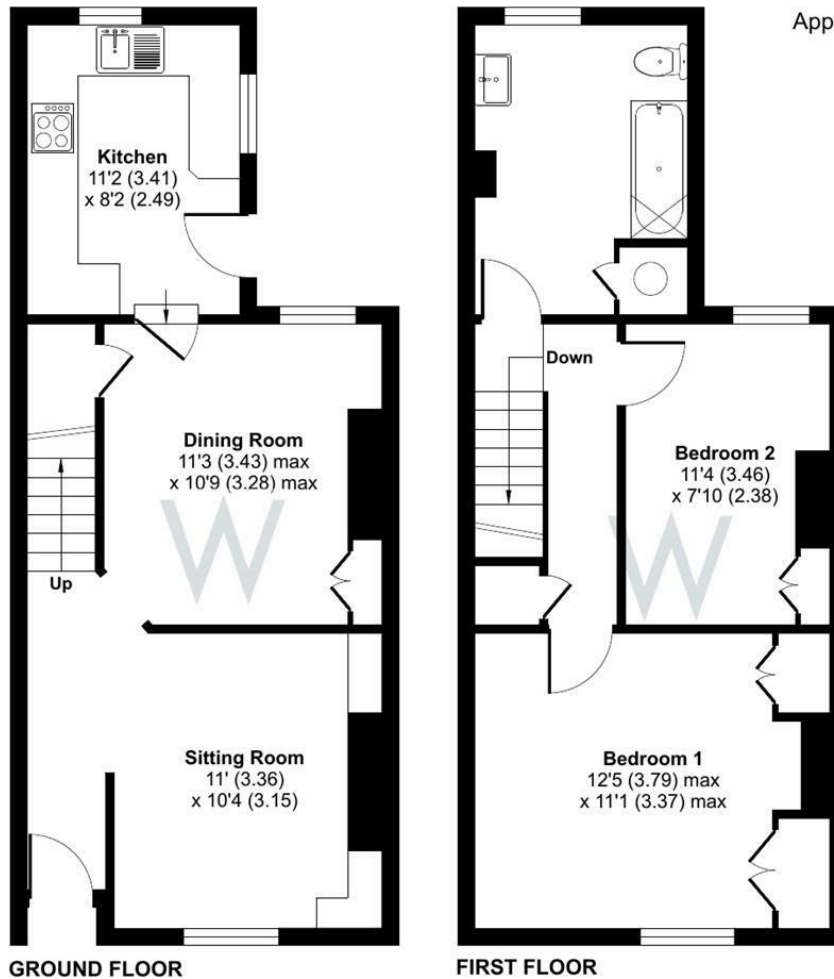
Please note that applications are not decided on a first-come, first-served basis. We aim to ensure a fair process for everyone, and all applications will be carefully considered on its merits by us, in conjunction with the landlord, before a final decision is made.

The availability date listed is provisional and will only be confirmed once referencing has been successfully completed.

Nursery Road, Salisbury, SP2

Approximate Area = 821 sq ft / 76.3 sq m

For identification only - Not to scale



Floor plan produced in accordance with RICS Property Measurement 2nd Edition, Incorporating International Property Measurement Standards (IPMS2 Residential). © nñhecom 2025. Produced for H W White Ltd. REF: 1298111



Energy Efficiency Rating		
	Current	Potential
Very energy efficient - lower running costs		
(92 plus) A		85
(81-91) B		
(69-80) C		61
(55-68) D		
(39-54) E		
(21-38) F		
(1-20) G		
Not energy efficient - higher running costs		
England & Wales		EU Directive 2002/91/EC

WHITES

Castle Chambers, 47 Castle Street, Salisbury,
Wiltshire, SP1 3SP

01722 336422

www.hwwwhite.co.uk

residential-sales@hwwwhite.co.uk

