



**32 Pilgrims Mead, Bishopdown Farm, Salisbury, Wiltshire, SP1 3GX**

**£1,800 PCM**



## Accommodation Comprises;

Entrance hall with under stairs cupboard and cloakroom. Sitting room with bay window and feature fireplace. Newly fitted kitchen with a good range of wall and base units, 1.5 bowl sink, ceramic hob and electric oven, space for a fridge/freezer. Archway through to a newly fitted utility room with space for a washing machine and tumble dryer, door to the garden. Dining room with French doors onto the garden.

Upstairs; spacious principal bedroom with fitted wardrobes and en-suite shower room. Bedroom two, double with fitted wardrobes. Modern family bathroom with shower over the bath. Bedroom 3, double. Bedroom 4, large single/study.

Outside; enclosed rear garden with side access, terrace and storage shed. Tarmac driveway with parking for 2 cars and single garage with courtesy door to garden.

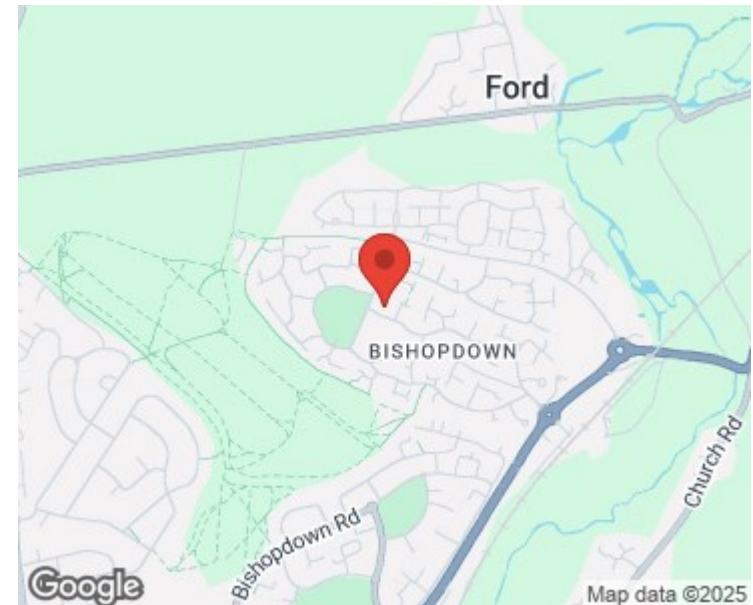
The property benefits from gas central heating, double glazing and solar hot water.

PLEASE NOTE: The kitchen and utility room are currently being replaced and the photographs shown are renders of both.

## Key Points -

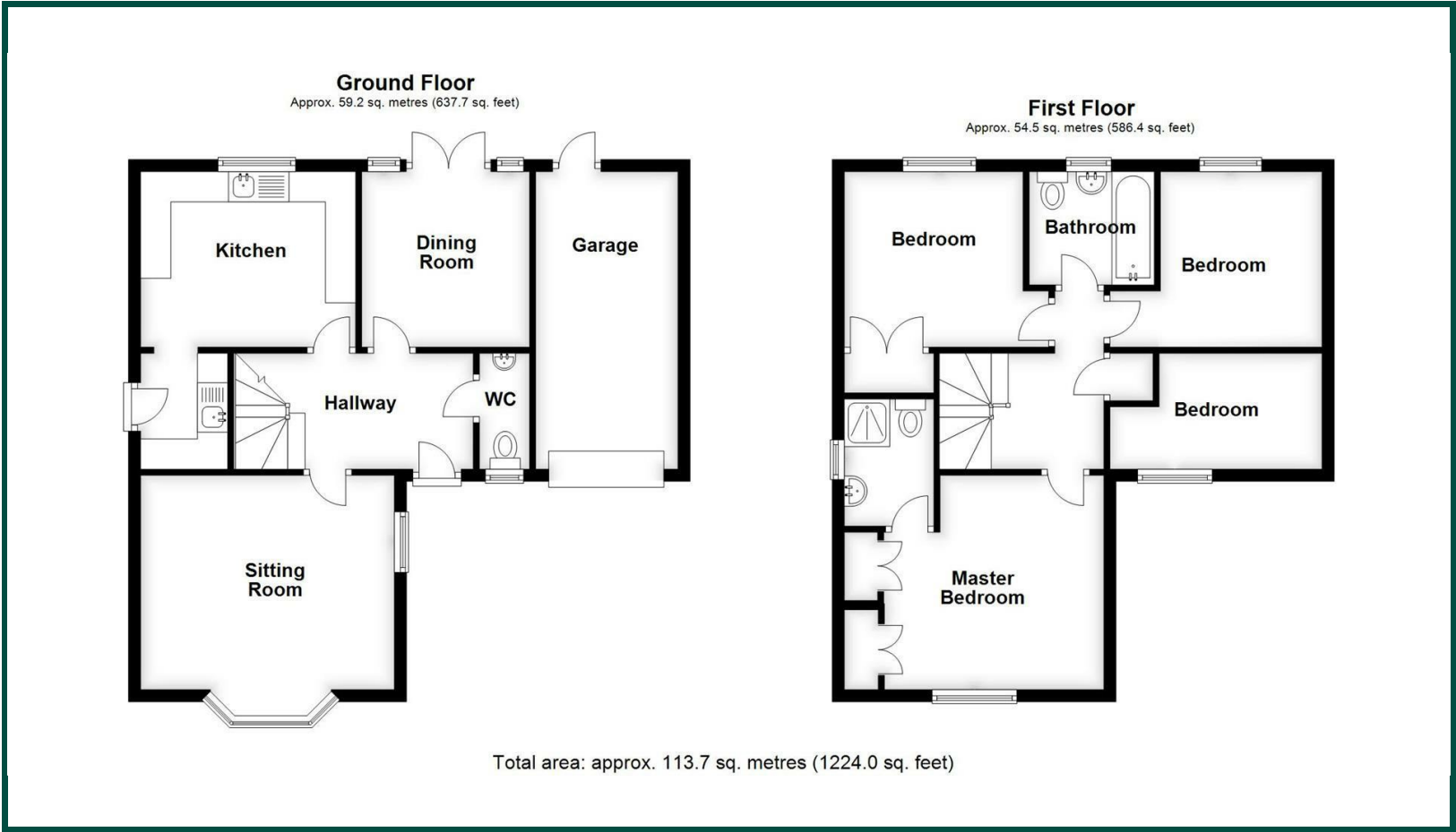
- Well presented family home
- Two reception rooms
- Newly fitted kitchen
- Newly fitted utility room
- Four bedrooms
- Principal bedroom with en-suite shower room
- Modern family bathroom with shower over bath
- Enclosed rear garden with terrace & shed
- Solar hot water
- Garage and parking on the driveway

## Location -





Floor Plan -



EPC -

