



RESIDENTIAL ESTATE AGENTS
PROPERTY LETTING & MANAGING AGENTS
VALUERS & PROPERTY CONSULTANTS
CHARTERED SURVEYORS

01722 336422
www.hwwhite.co.uk WEB



Pilgrims Mead, Bishopdown

£1,800 PCM

32 Pilgrims Mead, Bishopdown Farm, Salisbury, Wiltshire, SP1 3GX



Energy Efficiency Rating		
	Current	Potential
Very energy efficient - lower running costs		
(92 plus) A		86
(81-91) B		
(69-80) C	72	
(55-68) D		
(39-54) E		
(21-38) F		
(1-20) G		
Not energy efficient - higher running costs		
England & Wales		EU Directive 2002/91/EC

Accommodation Comprises;

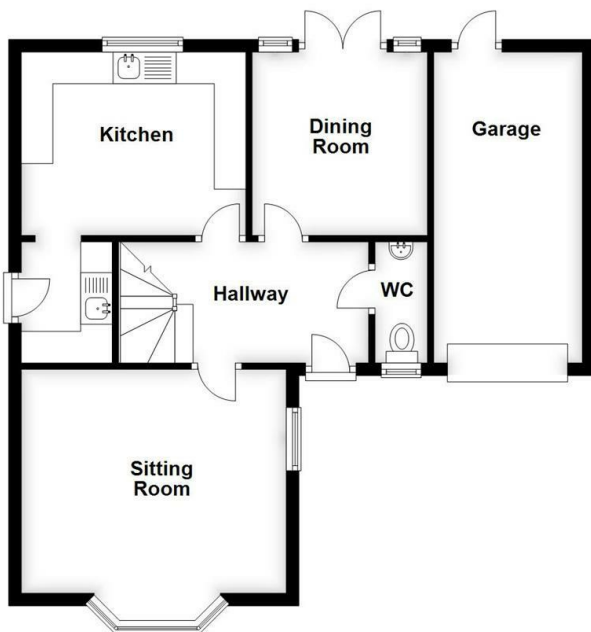
Entrance hall with under stairs cupboard and cloakroom. Sitting room with bay window and feature fireplace. Newly fitted kitchen with a good range of wall and base units, 1.5 bowl sink, ceramic hob and electric oven, space for a fridge/freezer. Archway through to a newly fitted utility room with space for a washing machine and tumble dryer, door to the garden. Dining room with French doors onto the garden.

Upstairs; spacious principal bedroom with fitted wardrobes and en-suite shower room. Bedroom two, double with fitted wardrobes. Modern family bathroom with shower over the bath. Bedroom 3, double. Bedroom 4, large single/study.

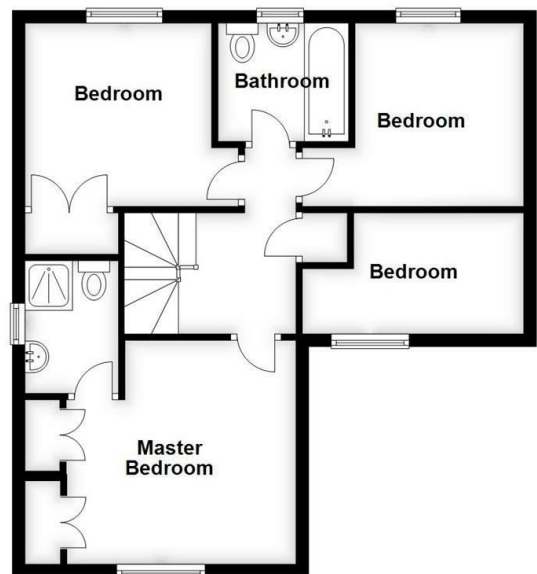
Outside; enclosed rear garden with side access, terrace and storage shed. Tarmac driveway with parking for 2 cars and single garage with courtesy door to garden.

The property benefits from gas central heating, double glazing and solar hot water.

Ground Floor
Approx. 59.2 sq. metres (637.7 sq. feet)



First Floor
Approx. 54.5 sq. metres (586.4 sq. feet)



Total area: approx. 113.7 sq. metres (1224.0 sq. feet)

W
WHITES

01722 336422

47 Castle Street, Salisbury SP1 3SP 01722 320600 FAX
residential-sales@hwwhite.co.uk E-MAIL www.hwwhite.co.uk WEB