



**Guildhall Cottage, Wardour, Tisbury, Wiltshire, SP3 6RN**

**£950 PCM**



### Description

An exceptional opportunity to rent a beautifully presented two-bedroom stone cottage in a peaceful, elevated position with far-reaching views over the Nadder Valley, just outside Tisbury. This property is offered with a reduced rent in exchange for dog care three days per week, providing an ideal arrangement for a responsible, dog-loving tenant seeking a high-quality rural home. The cottage was renovated to a high standard approximately ten years ago and offers well-appointed accommodation full of character and comfort. The ground floor comprises an entrance vestibule, cloakroom with W/C, and a spacious sitting/dining room featuring a wood-burning stove. The kitchen is fitted with an attractive range of units, wooden worktops, a Belfast sink, and an electric cooker with ceramic hob. A separate larder and utility room, complete with washing machine and tumble dryer, provide additional storage and functionality. On the first floor, there is a generous double bedroom with lovely views to the front and a spacious bathroom with a shower over the bath and an airing cupboard. A further staircase leads to the second double bedroom, located within a converted attic space with a Velux window (note: restricted head height in places). Externally, the property benefits from a gravelled parking area, a small rear garden, and a shed. Heating and hot water are provided via an electric air source heat pump. The property is offered fully furnished. The landlord resides in the neighbouring property and is seeking a tenant who can assist with caring for their dog three days a week, including walking and general companionship. No cleaning or other domestic duties are required. This arrangement would particularly suit someone working from home or with a flexible schedule who enjoys rural living and the company of a well-behaved dog.

### A Note From the Whites Letting Team

Thank you for considering Whites as your letting agent. As a proud member of the Royal Institution of Chartered Surveyors (RICS), we aspire to uphold its core values by providing a fair, efficient, and transparent service for all prospective tenants. Below we've outlined how we manage property enquiries and applications to help set expectations and guide you through the letting application process.

To begin the process of enquiring about one of our properties, please click the 'Request Further Details/Info' button on the property listing. This will send us your contact information, and we'll get back to you as soon as possible with a short questionnaire to complete. Once we've received your completed questionnaire, your enquiry will be registered with the relevant Property Manager. Please note, only those who complete this step will be considered as having formally enquired about the property.

Due to the high level of interest we often receive, we regret that we aren't often able to offer everyone a viewing. Where possible, we handle enquiries in the order they are received and arrange viewings in groups of up to 4 for the first round. If the property remains available, an additional round of viewings may be scheduled. To manage expectations, we may also temporarily pause viewings to review enquiries. If this happens, we'll do our best to update the property listing accordingly.

Please note that applications are not decided on a first-come, first-served basis. We aim to ensure a fair process for everyone, and all applications will be carefully considered on its merits by us, in conjunction with the landlord, before a final decision is made.

The availability date listed is provisional and will only be confirmed once referencing has been successfully completed.

### Key Points -

- Reduced rent for dog care
- Two-bedroom stone cottage
- Elevated position with views
- Air source heating
- Renovated to a high standard
- Wood-burning stove
- Fully furnished
- Well-equipped kitchen
- Parking and garden included
- Dog lovers only - three days per week

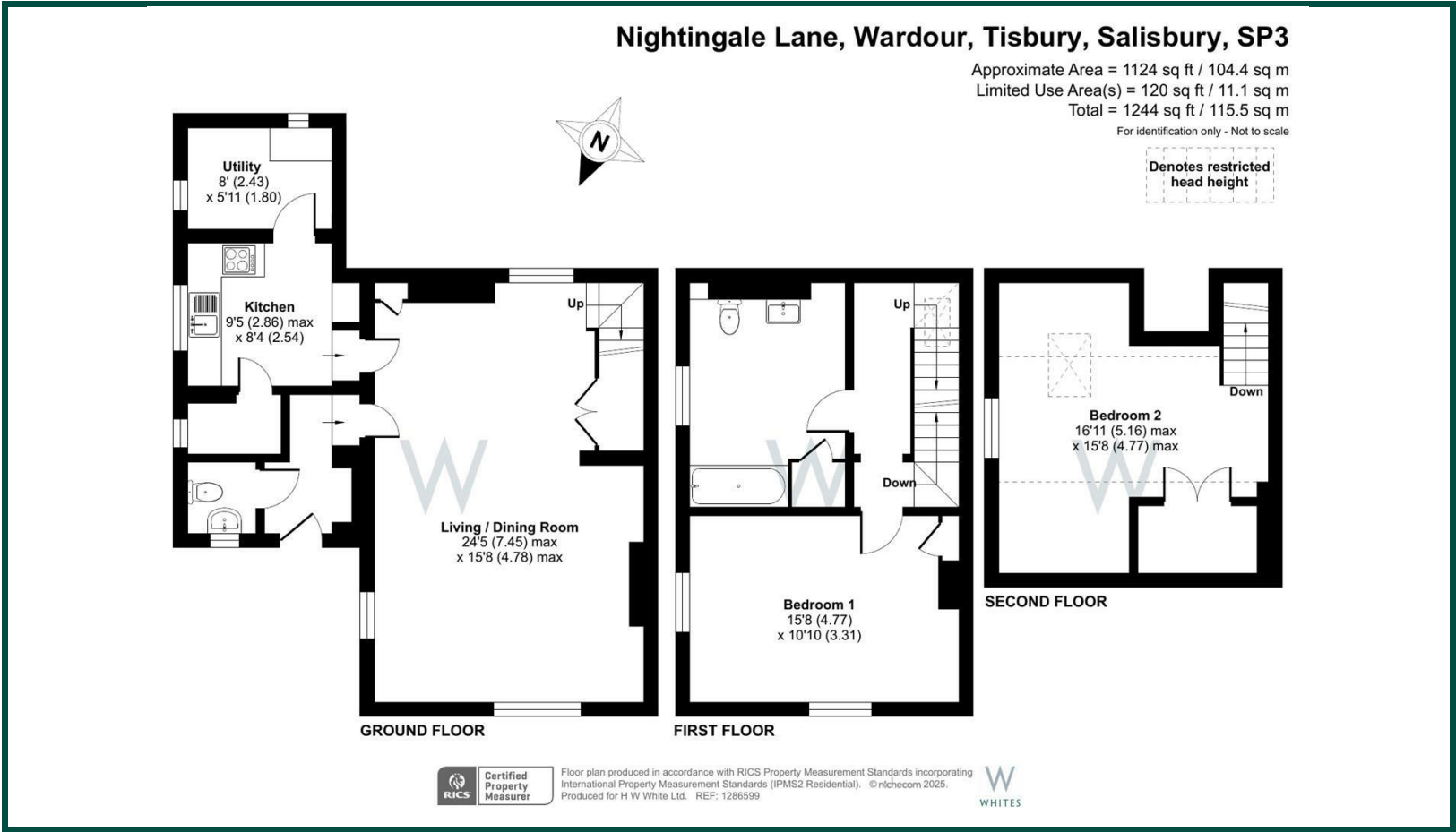
### Location -







Floor Plan -



EPC -

