



RESIDENTIAL ESTATE AGENTS
PROPERTY LETTING & MANAGING AGENTS
VALUERS & PROPERTY CONSULTANTS
CHARTERED SURVEYORS

01722 336422
www.hwwhite.co.uk WEB



Beechfield, Newton Tony

£1,350 PCM

44 Beechfield, Newton Tony, Nr Salisbury, Wiltshire, SP4 0HH



Energy Efficiency Rating		
	Current	Potential
Very energy efficient - lower running costs		
(92 plus) A		
(81-91) B		
(69-80) C		
(55-68) D		
(39-54) E		
(21-38) F		
(1-20) G		
Not energy efficient - higher running costs		
England & Wales		EU Directive 2002/91/EC

A modern well presented 3 bedroom semi-detached house in sought after village location which is currently undergoing renovation. Accommodation comprises sitting room with sliding door to rear garden, parquet floor and fireplace in sitting room, hallway, brand new kitchen with hob ,extractor and oven, with door leading to separate utility area. Plumbing for dishwasher, washing machine etc. Back door to rear garden with patio area and lawn. Three bedrooms off the galleried landing being two doubles and one single, two with built in wardrobes. New Bathroom with shower over bath . Single garage with light and power, off road parking, UPVC windows throughout. Insulated and boarded roof space. Oil c/h. UNFURNISHED. Council Tax Band D. Available May 2025

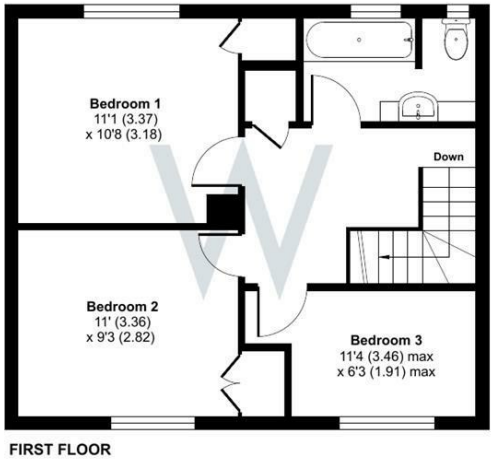
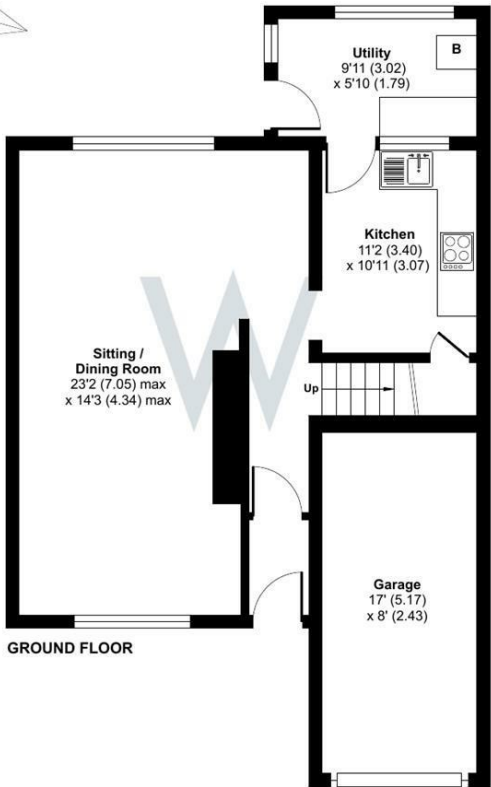
A Note From the Whites Letting Team
Thank you for considering Whites as your letting agent. As a proud member of the Royal Institution of Chartered Surveyors (RICS), we aspire to uphold its core values by providing a fair, efficient, and transparent service for all prospective tenants. Below we've outlined how we manage property enquiries and applications to help set expectations and guide you through the letting application process.

To begin the process of enquiring about one of our properties, please click the 'Request Further Details/Info' button on the property listing. This will send us your contact information, and we'll get back to you as soon as possible with a short questionnaire to complete. Once we've received your completed questionnaire, your enquiry will be registered with the relevant Property Manager. Please note, only those who complete this step will be considered as having formally enquired about the property.

Due to
receiving
expectations

Please
on its

The a



Newton Toney, Salisbury, SP4

Approximate Area = 959 sq ft / 89 sq m
Garage = 131 sq ft / 12.1 sq m
Total = 1090 sq ft / 101.1 sq m
For identification only - Not to scale



Floor plan produced in accordance with RICS Property Measurement 2nd Edition, Incorporating International Property Measurement Standards (IPMS2 Residential). © ncheom 2025. Produced for H W White Ltd. REF: 1276916



01722 336422

47 Castle Street, Salisbury SP1 3SP 01722 320600 FAX
residential-sales@hwwhite.co.uk E-MAIL www.hwwhite.co.uk WEB