



W  
WHITES

14 Westfield Close, Laverstock, Salisbury, Wiltshire, SP1 1SG

Guide Price £400,000



## 14, Westfield Close, Laverstock, Salisbury

A 3 bedroom detached family home in a quiet location close to schools and shop, with front and rear gardens together with garage and parking. It is in need of some updating but offers terrific potential for extension and alteration.

- Vacant possession
- Quiet cul-de-sac
- Two reception rooms
- Three bedrooms
- Gas central heating
- Double glazing
- Bathroom and shower room
- Utility room
- Parking and garage
- test

Guide Price £400,000



3



2



2

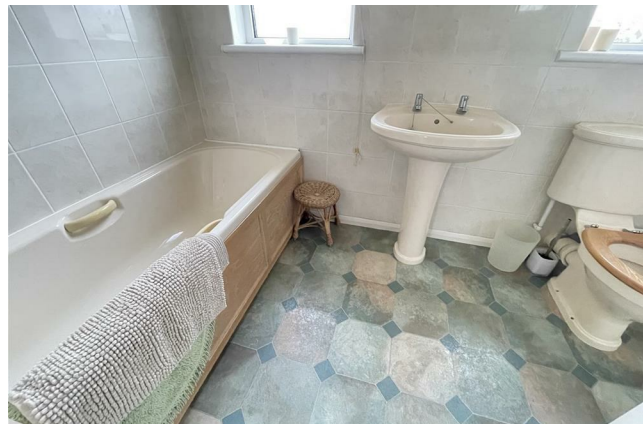












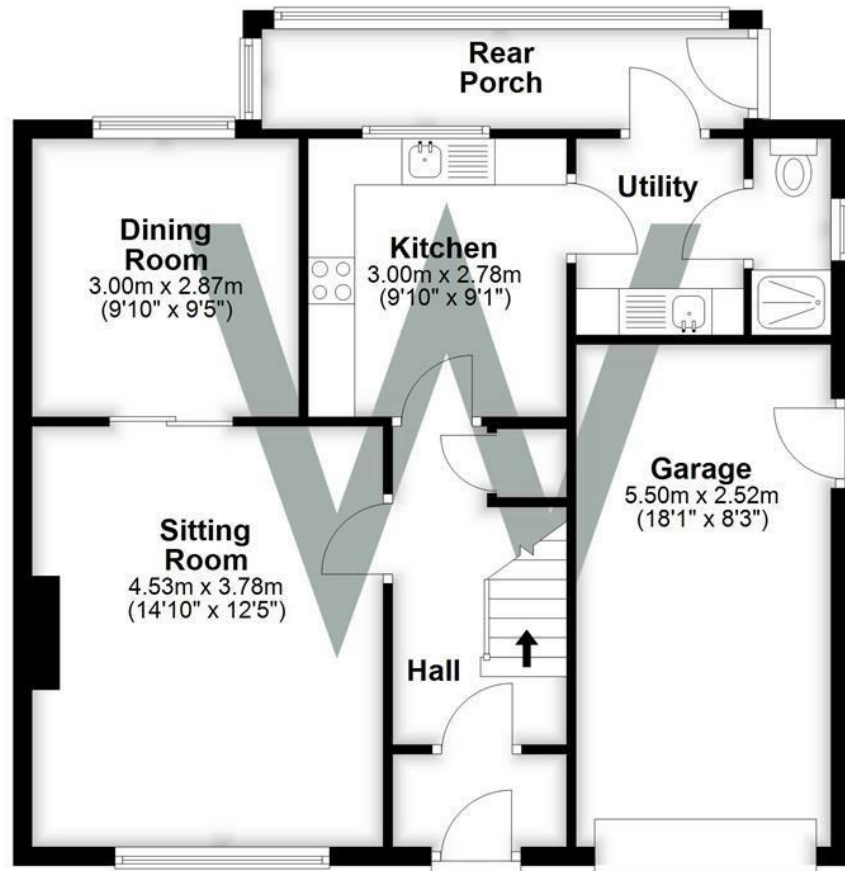






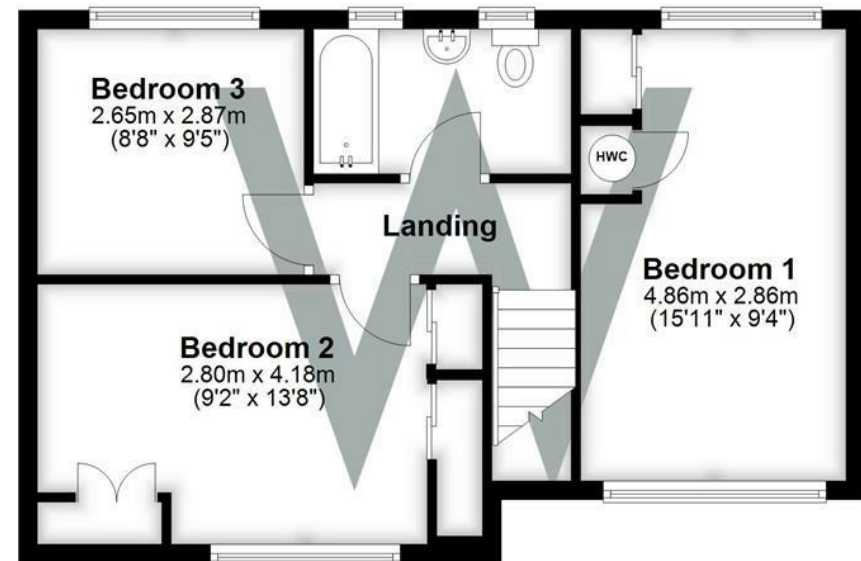
## Ground Floor

Approx. 71.6 sq. metres (770.9 sq. feet)



## First Floor

Approx. 45.6 sq. metres (490.5 sq. feet)



Total area: approx. 117.2 sq. metres (1261.4 sq. feet)