



## 6 Belgrave Terrace, York Road, Salisbury, Wiltshire, SP2 7AP

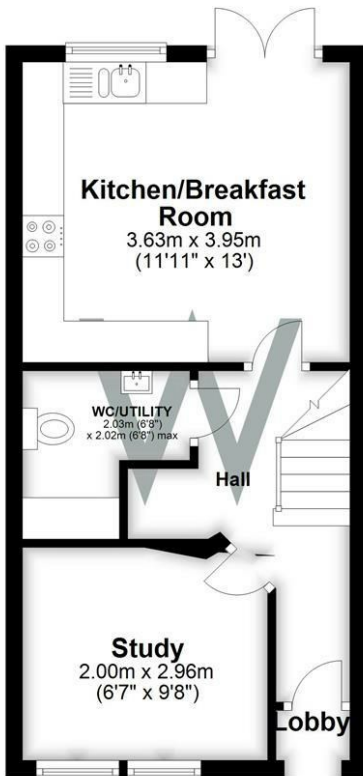
\*\*\* VIEWINGS ON HOLD DUE TO HIGH DEMAND\*\*\*

A spacious unfurnished, four bedroom, three story town house located within easy walking distance of the city centre with two allocated parking spaces and enclosed garden.

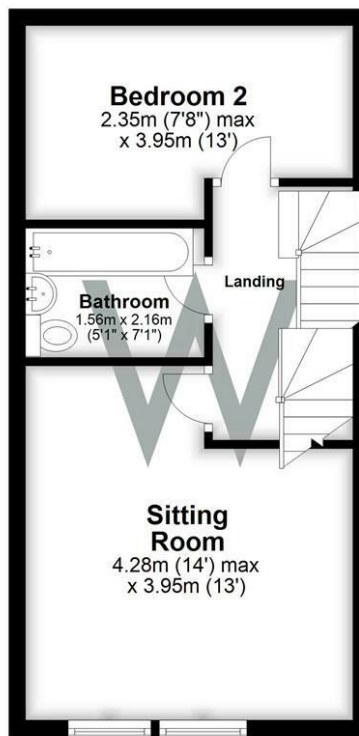
- WALKING DISTANCE TO THE CITY CENTRE AND RAILWAY STATION
- FITTED KITCHEN/DINER WITH DOORS TO GARDEN
- CLOAKROOM/UTILITY ROOM
- STUDY
- FIRST FLOOR SITTING ROOM
- FOUR BEDROOMS
- TWO BATHROOMS
- TWO ALLOCATED PARKING SPACES
- ENCLOSED GARDEN
- GAS FIRED CENTRAL HEATING

**£1,500 PCM**

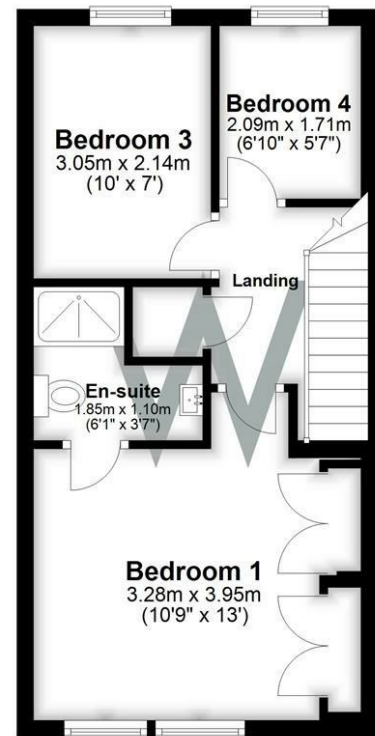
### Ground Floor



### First Floor



### Second Floor



Total area: approx. 99.2 sq. metres (1067.7 sq. feet)  
**6 Belgrave Terrace**

#### WHITES

Castle Chambers, 47 Castle Street, Salisbury,  
Wiltshire, SP1 3SP  
Tel: 01722 336422/Option 2  
www.hwwhite.co.uk  
email: lettings-management@hwwhites.co.uk

Energy Efficiency Rating		Current	Potential
Very energy efficient - lower running costs			
(92 plus) <b>A</b>			<b>92</b>
(81-91) <b>B</b>		<b>81</b>	
(69-80) <b>C</b>			
(55-68) <b>D</b>			
(39-54) <b>E</b>			
(21-38) <b>F</b>			
(1-20) <b>G</b>			
Not energy efficient - higher running costs			
<b>England &amp; Wales</b>	EU Directive 2002/91/EC		

Environmental Impact (CO <sub>2</sub> ) Rating		Current	Potential
Very environmentally friendly - lower CO <sub>2</sub> emissions			
(92 plus) <b>A</b>			<b>96</b>
(81-91) <b>B</b>		<b>86</b>	
(69-80) <b>C</b>			
(55-68) <b>D</b>			
(39-54) <b>E</b>			
(21-38) <b>F</b>			
(1-20) <b>G</b>			
Not environmentally friendly - higher CO <sub>2</sub> emissions			
<b>England &amp; Wales</b>	EU Directive 2002/91/EC		