



6 Buttercup Close, Harnham, Salisbury, SP2 8FA

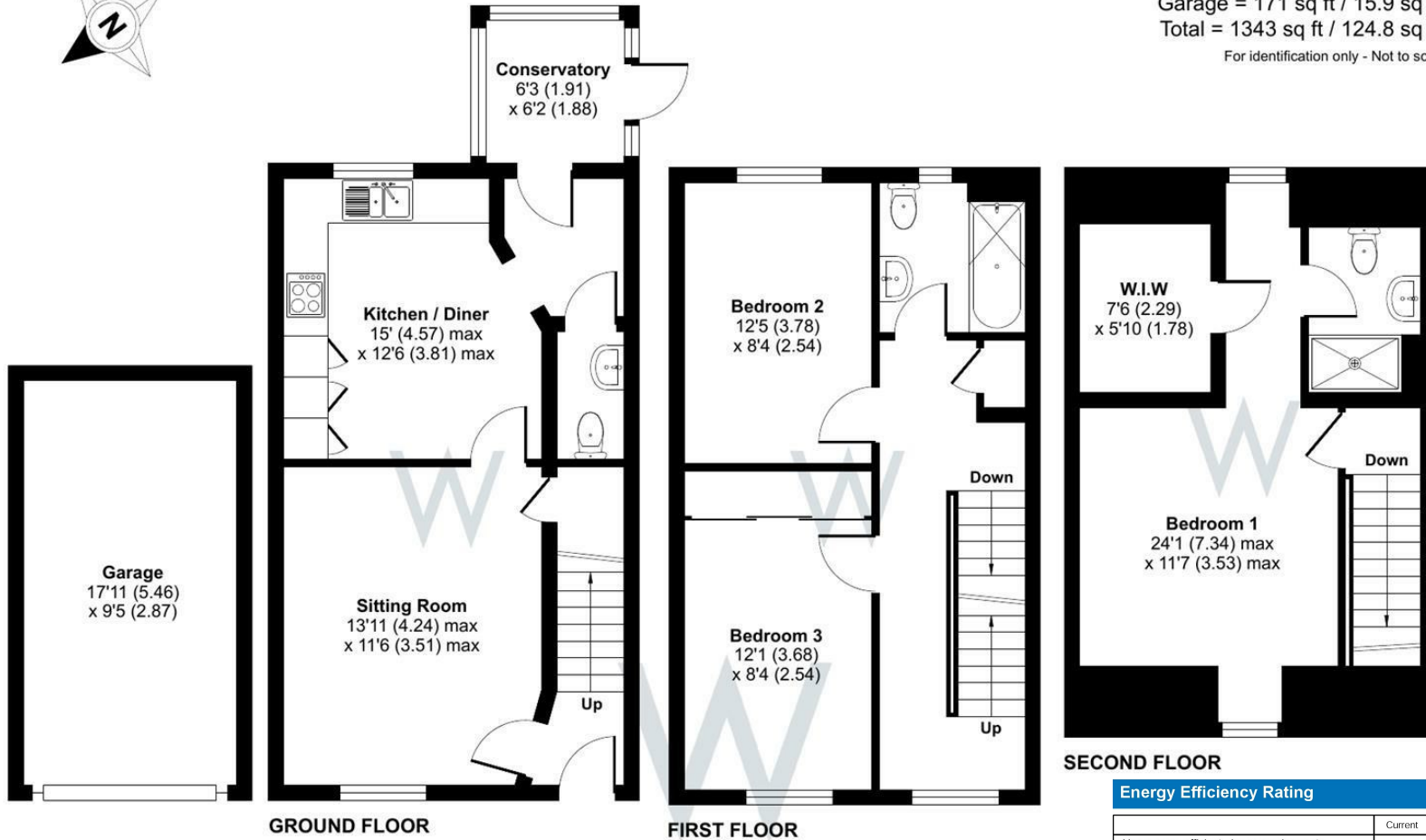
£1,750

6 Buttercup Close is a modern townhouse located in the desirable Harnham suburb of Salisbury, offering plenty of living space spread across three storeys. The ground floor includes a well-proportioned sitting room, a contemporary kitchen with fitted appliances, and a bright, south-facing conservatory that opens onto a low-maintenance courtyard garden. There's also a convenient guest W/C on this level. The first floor offers two spacious double bedrooms and a family bathroom, while the entire top floor is dedicated to the principal bedroom suite, featuring a generous walk-in wardrobe and a stylish en-suite shower room. Outside, the property benefits from a private south-facing courtyard garden, ideal for outdoor dining, an allocated garage, and additional residents' parking. Built in 2012 within a secure gated development, it's located near the scenic 'Town Path,' providing direct access to Salisbury's city centre, Cathedral Close, and other local amenities. The area also offers excellent transport links, with direct trains to London, Bristol, and Bath, along with ultrafast broadband available for modern living.

# Buttercup Close, Salisbury, SP2

Approximate Area = 1172 sq ft / 108.9 sq m  
 Garage = 171 sq ft / 15.9 sq m  
 Total = 1343 sq ft / 124.8 sq m

For identification only - Not to scale



Floor plan produced in accordance with RICS Property Measurement Standards incorporating International Property Measurement Standards (IPMS2 Residential). © n̄che.com 2024. Produced for H W White Ltd. REF: 1195379



Energy Efficiency Rating		Current	Potential
Very energy efficient - lower running costs			
(92 plus) A			
(81-91) B			
(69-80) C			
(55-68) D			
(39-54) E			
(21-38) F			
(1-20) G			
Not energy efficient - higher running costs			
		79	87
England & Wales		EU Directive 2002/91/EC	

**WHITES**  
 Castle Chambers, 47 Castle Street,  
 Salisbury, Wiltshire, SP1 3SP  
 01722 336422  
[www.hwwhite.co.uk](http://www.hwwhite.co.uk)  
[residential-sales@hwwhite.co.uk](mailto:residential-sales@hwwhite.co.uk)

