



Studio A, 114 Fisherton Street, Salisbury, Wiltshire, SP2 7QY

£625 PCM

A well presented but compact, first floor studio flat being one of three similar units above Stone Rose Hairdresser shop in Fisherton Street. This studio flat has a modern interior presented to a good standard with modest accommodation, comprising: front door from the pavement to communal stairs, leading up to the front door of the studio.

There is one main living room with a kitchenette in one corner and a double bed in the other. Shower room containing quadrant cubicle with electric shower, wash hand basin and WC.

The studio is double glazed and heated via the latest generation of efficient, quantum electric heating. Laminate flooring. Kitchenette has a small fridge-freezer, built-in microwave oven but there is no hob, oven or plumbing for a washing machine, hence laundry will have to be done at the local laundrette.

The water is metered and minimum Council Tax.

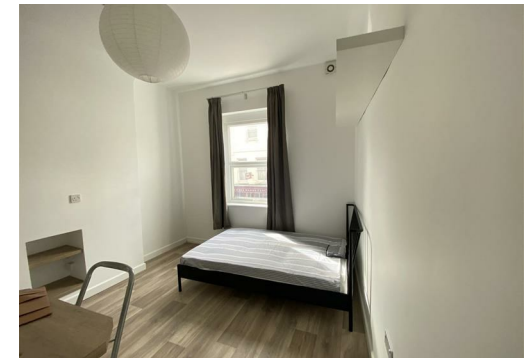
Long term tenant preferred. SINGLE OCCUPANCY.

Ground Floor

Approx. 16.2 sq. metres (174.5 sq. feet)



Total area: approx. 16.2 sq. metres (174.5 sq. feet)



WHITES
Castle Chambers, 47 Castle Street,
Salisbury, Wiltshire, SP1 3SP
01722 336422
www.hwwhite.co.uk
residential-sales@hwwhite.co.uk

Energy Efficiency Rating		
	Current	Potential
Very energy efficient - lower running costs		
(92 plus) A		
(81-91) B		
(69-80) C	71	71

