

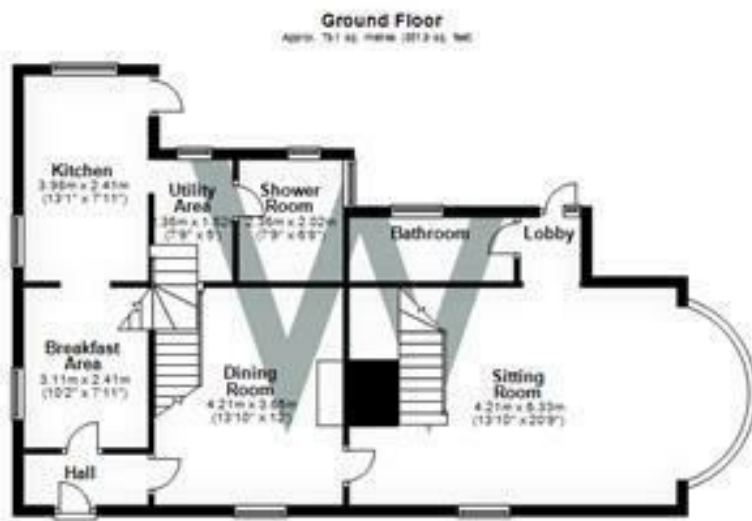


## 4 West Dean East Dean Road, West Dean, Salisbury, Wiltshire, SP5 1JA

A thatched cottage in an idyllic village to the east of Salisbury, a short distance from the railway station. 3 bedrooms plus an additional mezzanine room. Garden, off-road parking.

- CHARACTER DETACHED THATCHED COTTAGE
- THREE BEDROOMS PLUS MEZZANINE ROOM
- VILLAGE LOCATION
- OFF ROAD PARKING
- GARDEN
- EPC - E
- COUNCIL TAX BAND - F
- \*\*\*NO PETS\*\*\*

**£1,450 PCM**



Total area approx. 135.4 sq. metres (1457.3 sq. feet)

**WHITES**

Castle Chambers, 47 Castle Street, Salisbury,  
 Wiltshire, SP1 3SP  
 Tel: 01722 336422/Option 2  
 www.hwwhite.co.uk  
 email: lettings-management@hwwhites.co.uk

Energy Efficiency Rating		Current	Potential
Very energy efficient - lower running costs			
(92 plus) <b>A</b>			<b>86</b>
(81-91) <b>B</b>			
(69-80) <b>C</b>			
(55-68) <b>D</b>			
(39-54) <b>E</b>			
(21-38) <b>F</b>		<b>42</b>	
(1-20) <b>G</b>			
Not energy efficient - higher running costs			
<b>England &amp; Wales</b>		EU Directive 2002/91/EC	

Environmental Impact (CO <sub>2</sub> ) Rating		Current	Potential
Very environmentally friendly - lower CO <sub>2</sub> emissions			
(92 plus) <b>A</b>			<b>61</b>
(81-91) <b>B</b>			
(69-80) <b>C</b>			
(55-68) <b>D</b>			
(39-54) <b>E</b>			
(21-38) <b>F</b>		<b>24</b>	
(1-20) <b>G</b>			
Not environmentally friendly - higher CO <sub>2</sub> emissions			
<b>England &amp; Wales</b>		EU Directive 2002/91/EC	