



Flat 4 4 Elm Grove Road, Salisbury, Wiltshire, SP1 1JW

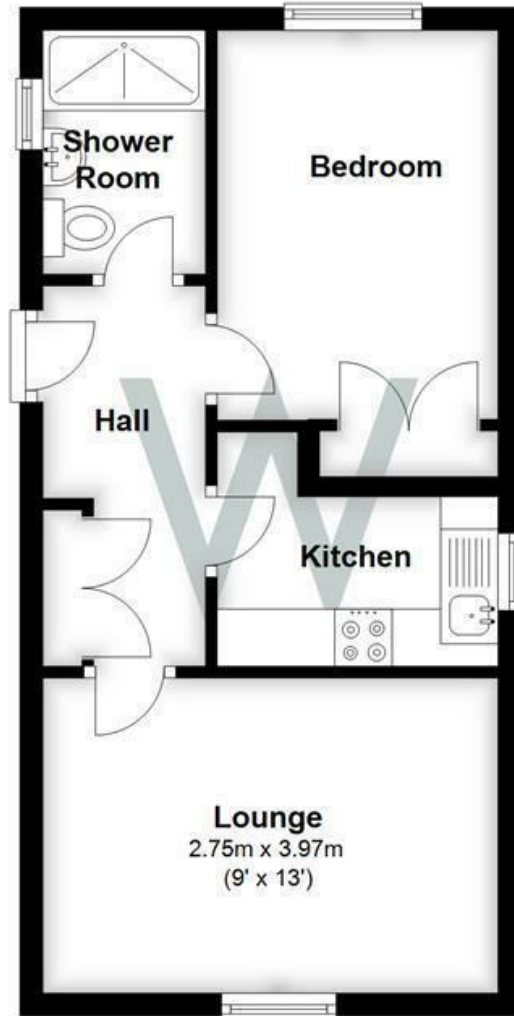
£750 PCM



A conveniently located purpose one bedroom first floor apartment, situated just outside the ring road and therefore with good access to the city centre. The apartment comprises of a good size entrance hall, it has a fitted kitchen with hob and oven, plumbing for washing machine and space for upright fridge freeze, lounge and shower room with large shower cubicle, has the benefit of security entry phone, gas fired central heating as well as double glazing. The property is UNFURNISHED with carpets

# Ground Floor

Approx. 33.2 sq. metres (357.0 sq. feet)



Total area: approx. 33.2 sq. metres (357.0 sq. feet)



Energy Efficiency Rating		Current	Potential
Very energy efficient - lower running costs			
(92 plus) <b>A</b>			
(81-91) <b>B</b>		<b>81</b>	<b>81</b>
(69-80) <b>C</b>			
(55-68) <b>D</b>			
(39-54) <b>E</b>			
(21-38) <b>F</b>			
(1-20) <b>G</b>			
Not energy efficient - higher running costs			
<b>England &amp; Wales</b>		EU Directive 2002/91/EC	

**WHITES**  
 Castle Chambers, 47 Castle Street,  
 Salisbury, Wiltshire, SP1 3SP  
 01722 336422  
[www.hwwhite.co.uk](http://www.hwwhite.co.uk)  
[residential-sales@hwwhite.co.uk](mailto:residential-sales@hwwhite.co.uk)

