



RESIDENTIAL ESTATE AGENTS  
PROPERTY LETTING & MANAGING AGENTS  
VALUERS & PROPERTY CONSULTANTS  
CHARTERED SURVEYORS

**01722 336422**  
[www.hwwhite.co.uk](http://www.hwwhite.co.uk) WEB



**South Street, Wilton**

**£725 PCM**

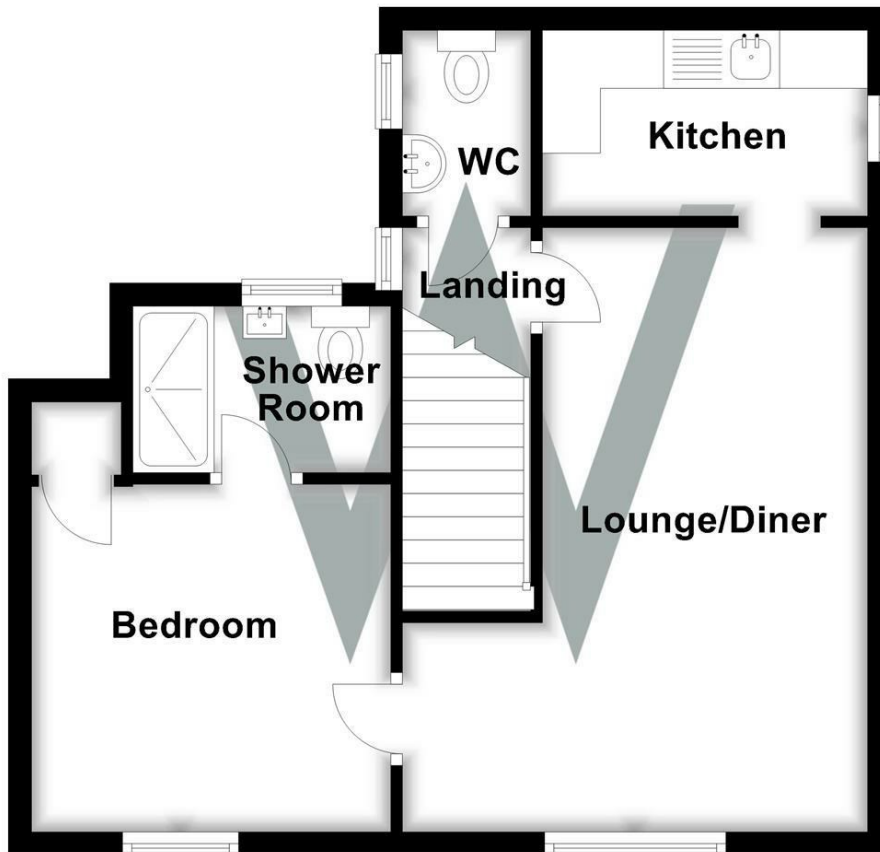
**5 South Street, Wilton, Salisbury, Wiltshire, SP2 0JS**



Energy Efficiency Rating		Current	Potential
Very energy efficient - lower running costs			
(92 plus) A			
(81-91) B			
(69-80) C		68	72
(55-68) D			
(39-54) E			
(21-38) F			
(1-20) G			
Not energy efficient - higher running costs			
England & Wales		EU Directive 2002/91/EC	

A one-bedroom flat located in the centre of the village of Wilton. The accommodation comprises an entrance lobby, first-floor landing, cloakroom, a recently remodeled kitchen with a freestanding electric oven, space for under counter fridge, plumbing and space for a washing machine. Lounge/dining room, double bedroom, re-fitted en suite shower room with WC wash hand basin and thermostatically controlled shower unit. The property has the benefit of gas central heating and double glazed windows (except the kitchen) UNFURNISHED. Carpets and vinyl flooring.

## First Floor



01722 336422

47 Castle Street, Salisbury SP1 3SP 01722 320600 FAX  
 residential-sales@hwwhite.co.uk E-MAIL www.hwwhite.co.uk WEB