



Flat 14, 37 Fowlers Road, Salisbury, Wiltshire, SP1 2QP

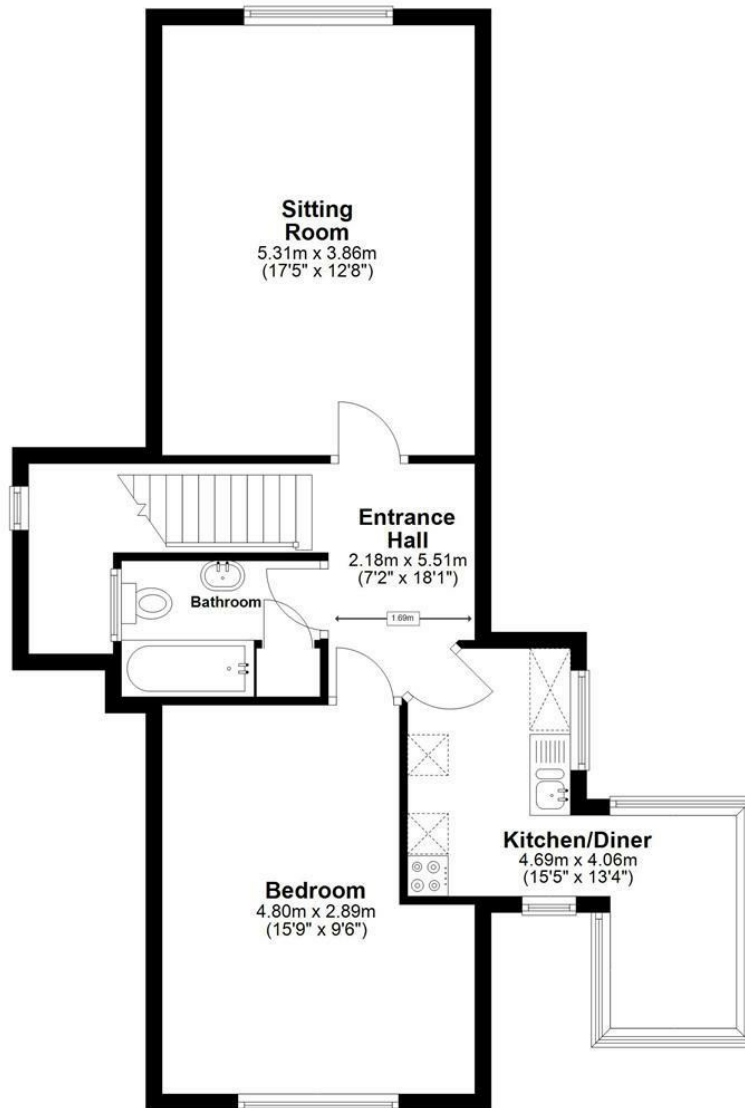
£895 PCM



A recently refreshed one-bedroom penthouse flat located within walking distance of Salisbury city center. The flat has been freshly painted and newly carpeted. The layout includes a spacious lounge with a large window and a skylight, creating a bright and airy atmosphere. The lounge leads to a unique kitchen breakfast room with space for a washing machine, fridge freezer, and a well-proportioned breakfast room with panoramic windows overlooking Salisbury city center and its surrounding green pastures. Additionally, there is a large double bedroom and a good-sized bathroom with a shower over the bath. The flat also features a pleasant communal garden at the front and rear of the property. The property also benefits from gas central heating.

## Top Floor Apartment

Approx. 63.1 sq. metres (678.7 sq. feet)



Energy Efficiency Rating		Current	Potential
Very energy efficient - lower running costs			
(92 plus) <b>A</b>			
(81-91) <b>B</b>			
(69-80) <b>C</b>			
(55-68) <b>D</b>			
(39-54) <b>E</b>			
(21-38) <b>F</b>			
(1-20) <b>G</b>			
Not energy efficient - higher running costs			
		<b>76</b>	<b>76</b>
England & Wales		EU Directive 2002/91/EC	

**WHITES**  
 Castle Chambers, 47 Castle Street,  
 Salisbury, Wiltshire, SP1 3SP  
 01722 336422  
[www.hwwhite.co.uk](http://www.hwwhite.co.uk)  
[residential-sales@hwwhite.co.uk](mailto:residential-sales@hwwhite.co.uk)

