

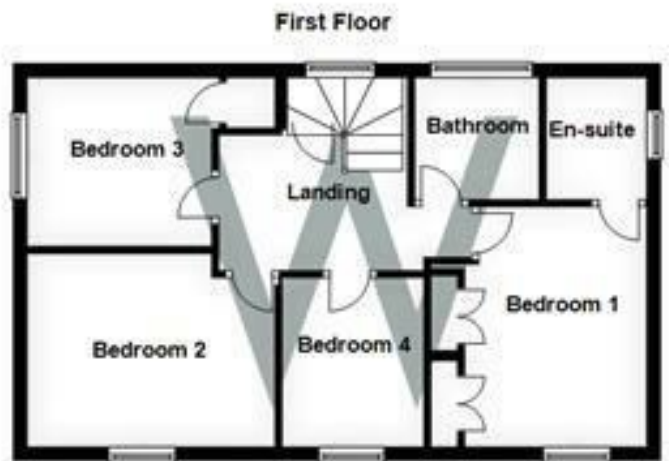
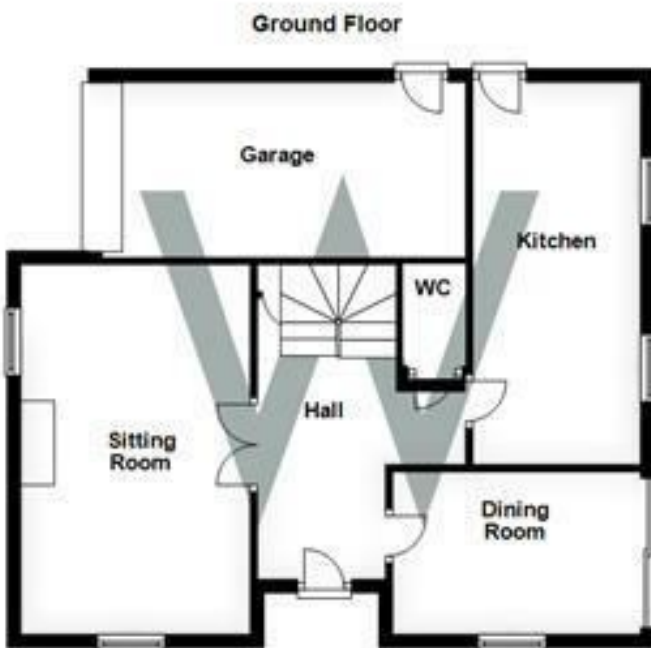


2 Hartley Way, Bishopdown Farm, Salisbury, Wiltshire, SP1 3WS

A beautifully presented four bedroom property in the sought after location of Bishopdown, with parking, garden, en-suite, and modern kitchen.

- MODERN KITCHEN
- LARGE LOUNGE
- 4-BEDROOMS
- EN-SUITE
- CLOAKROOM
- GAS FIREPLACE
- TWO PARKING SPACE
- GARAGE
- GAS CENTRAL HEATING
- EPC RATING- C

£1,750 PCM



WHITES

Castle Chambers, 47 Castle Street, Salisbury,
 Wiltshire, SP1 3SP
 Tel: 01722 336422/Option 2
 www.hwwhite.co.uk
 email: lettings-management@hwwhites.co.uk

Energy Efficiency Rating		Current	Potential
Very energy efficient - lower running costs			
(92 plus) A			
(81-91) B			
(69-80) C			
(55-68) D			
(39-54) E			
(21-38) F			
(1-20) G			
Not energy efficient - higher running costs			
England & Wales		69	83
	EU Directive 2002/91/EC		

Environmental Impact (CO ₂) Rating		Current	Potential
Very environmentally friendly - lower CO ₂ emissions			
(92 plus) A			
(81-91) B			
(69-80) C			
(55-68) D			
(39-54) E			
(21-38) F			
(1-20) G			
Not environmentally friendly - higher CO ₂ emissions			
England & Wales			
	EU Directive 2002/91/EC		