

W WHITES

RESIDENTIAL ESTATE AGENTS
PROPERTY LETTING & MANAGING AGENTS
VALUERS & PROPERTY CONSULTANTS
CHARTERED SURVEYORS

01722 336422
www.hwwhite.co.uk WEB



Gigant Street,

£975 PCM

Gigant Cottage Gigant Street, Salisbury, Wiltshire, SP1 2BQ



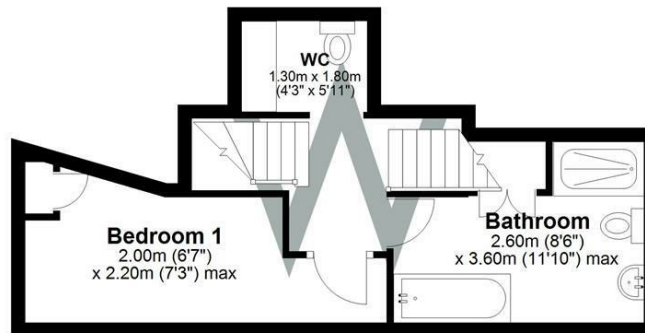
Energy Efficiency Rating		Current	Potential
Very energy efficient - lower running costs			
(92 plus) A			89
(81-91) B			
(69-80) C			
(55-68) D		57	
(39-54) E			
(21-38) F			
(1-20) G			
Not energy efficient - higher running costs			
England & Wales		EU Directive 2002/91/EC	

A newly redecorated 3-bed property, situated within the heart of the city centre. UNFURNISHED. Gas central heating.

A charming but compact town cottage with accommodation on three floors. The first floor comprises: a kitchen with fitted units, single electric oven, gas hob and integral fridge, and a living room with wooden flooring. The first floor comprises of one bedroom with recessed wardrobes, a spacious family bathroom with a thermostatic shower and a separate bathtub, as well as first floor utility room with WC. The second floor includes two further bedrooms. Gas fired central heating and hot water via a newly installed combi boiler in the bathroom. Recently redecorated throughout, with curtains but otherwise unfurnished. No outside space. Potentially long-term tenant sought.

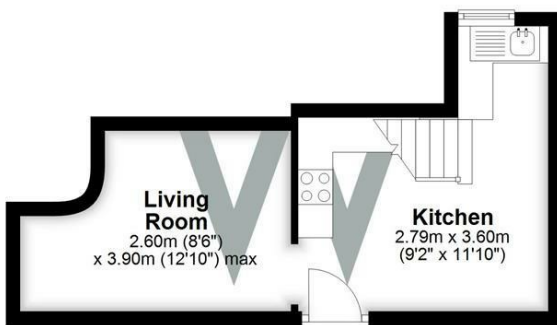
First Floor

Approx. 25.6 sq. metres (275.8 sq. feet)



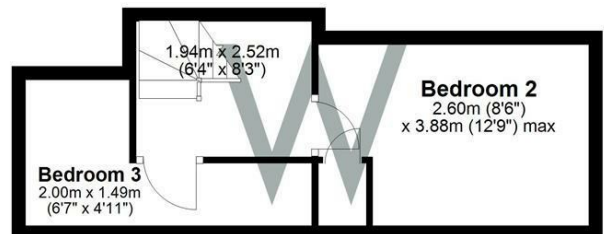
Ground Floor

Approx. 20.8 sq. metres (223.5 sq. feet)



Second Floor

Approx. 21.1 sq. metres (226.8 sq. feet)



Total area: approx. 67.5 sq. metres (726.1 sq. feet)

W
WHITES

01722 336422

47 Castle Street, Salisbury SP1 3SP 01722 320600 FAX
residential-sales@hwwhite.co.uk E.MAIL www.hwwhite.co.uk WEB