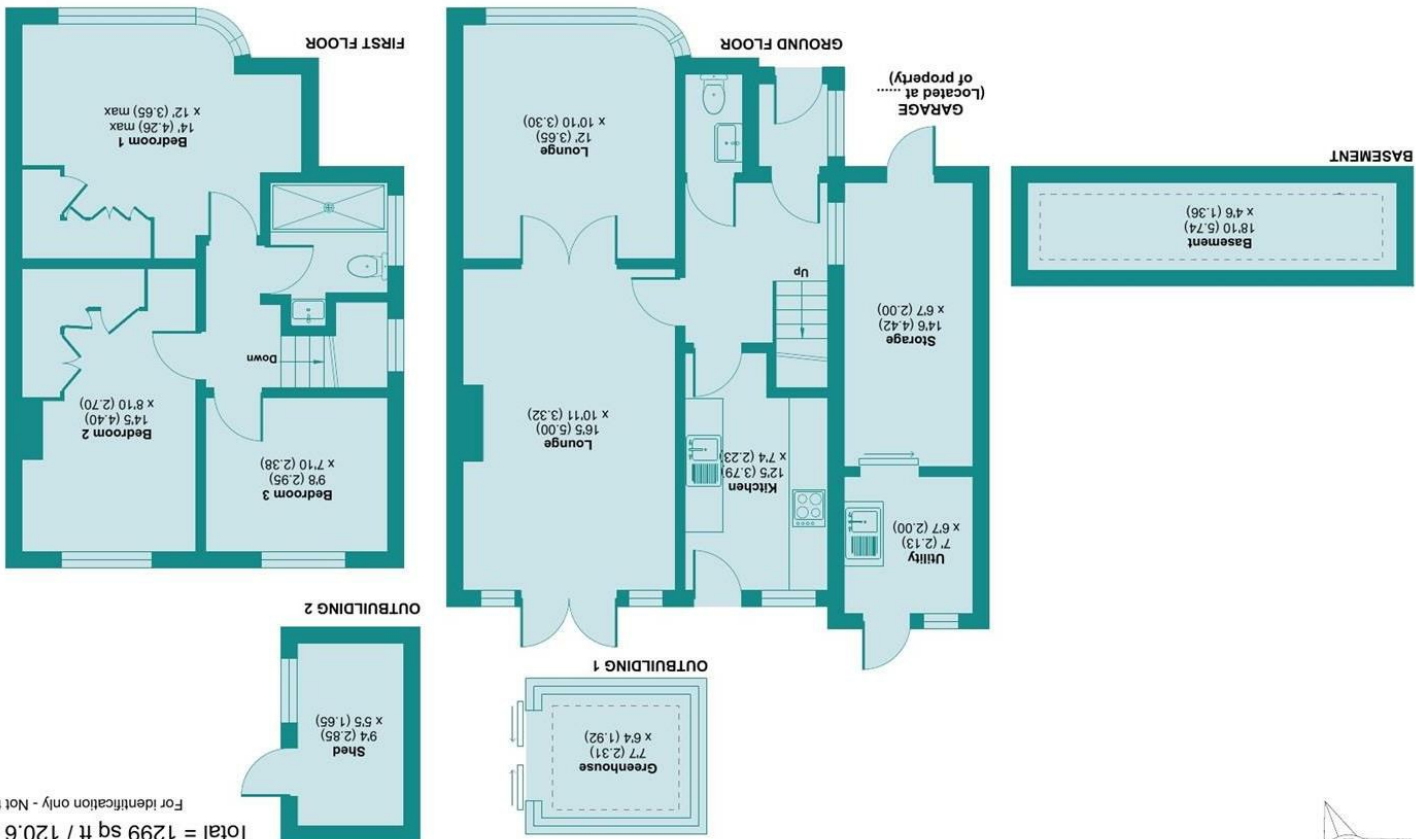


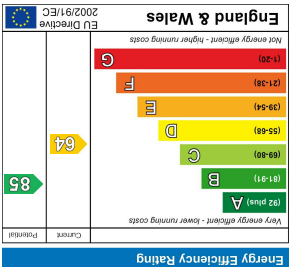
Produced for James Estate Agents. REF: 1299327
Incorporating International Property Measurement Standards (IPMS2 Residential). © nichcom 2025.



Approximate Area = 1056 sq ft / 98.1 sq m
Storage & Utility = 144 sq ft / 13.4 sq m
Outbuildings = 99 sq ft / 9.1 sq m
Total = 1299 sq ft / 120.6 sq m
For identification only - Not to scale

Oakleigh Drive, Croxley Green, Rickmansworth, WD3 3EE

LOCAL AUTHORITY
Three Rivers District Council
TENURE
Freehold
COUNCIL TAX BAND
E
VIEWS
By prior appointment only



Agents Note: Whilst every care has been taken to prepare these particulars, they are for guidance purposes only. All measurements are approximate and are for general guidance purposes only and whilst every care has been taken to ensure their accuracy, they should not be relied upon and potential buyers/tenants are advised to recheck the measurements

PROPERTY SUMMARY

This delightful semi-detached house on Oakleigh Drive offers an impressive 1,056 square feet, the property features three well-proportioned bedrooms. Upon entering, you are welcomed into a hallway with downstairs WC. The lounge has French doors to the garden and glazed internal door to the front reception room. The modern appliance fitted kitchen is bright and airy. Separate utility area. The property boasts a contemporary shower room, two double bedrooms with fitted wardrobes and a single. Outside, the house benefits from parking space for two vehicles and storage to the side, plus a basement area. The garden has a patio, grassed area, shrub and tree borders, greenhouse and shed. The surrounding area of Croxley Green is known for its picturesque scenery and community spirit, offering a range of local amenities, parks, and excellent transport links and excellent schools.

3



1



1

